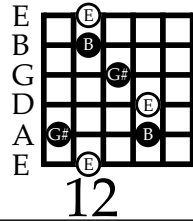
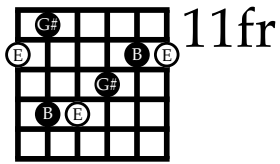


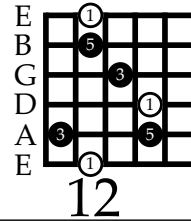
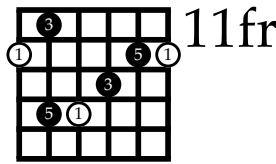
Unit 1: Major Chords, Scales, and Modes

Major Chord Arpeggios

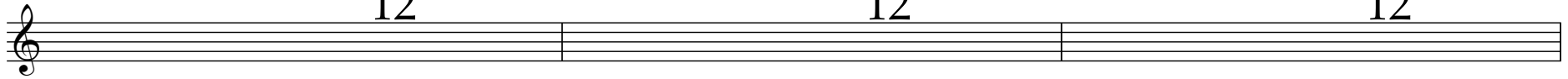
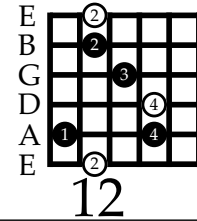
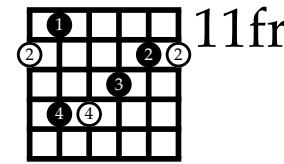
Notes



Scale Degrees



Finger Numbers



E Major Chord E \flat Major Chord D \sharp Major Chord D Major Chord D \flat Major Chord C \sharp Major Chord

C Major Chord B Major Chord B \flat Major Chord A \sharp Major Chord A Major Chord

A \flat Major Chord G \sharp Major Chord G Major Chord G \flat Major Chord F \sharp Major Chord F Major Chord

Major Chord Arpeggio 16th Note Exercises

♩ = 60 - 120+

E Major Chord

1 E & A 2 E & A 1 E & A 2 E & A 1 E & A 2 E & A 1 E & A 2 E & A 1 E & A 2 E & A 1 E & A 2 E & A 1

2 1 4 4 3 2 2 2 3 4 4 1 2

12th fret (E) 11th fret 10th fret (D) 9th fret 8th fret (C) 7th fret (B) 6th fret 5th fret (A) 4th fret 3rd fret (G) 2nd fret 1st fret (F)

♩ = 60 - 120+

E Major Chord

1 E & A 2 E & A 1 E & A 2 E & A 1 E & A 2 E & A 1

2 1 4 4 3 2 2 2 3 4 4 1 2

♩ = 60 - 120+

E Major Chord

1 E & A 2 E & A 1 E & A 2

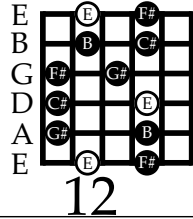
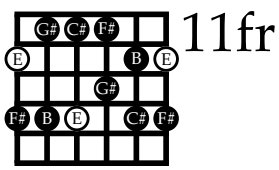
2 1 4 4 3 2 2 2 3 4 4 1 2

12th fret (E) 11th fret 10th fret (D) 9th fret 8th fret (C) 7th fret (B) 6th fret 5th fret (A) 4th fret 3rd fret (G) 2nd fret 1st fret (F)

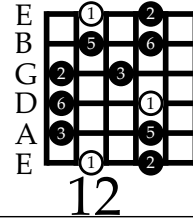
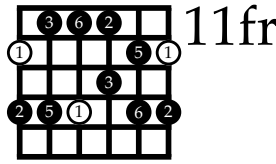
12th fret (E) 11th fret 10th fret (D) 9th fret 8th fret (C) 7th fret (B) 6th fret 5th fret (A) 4th fret 3rd fret (G) 2nd fret 1st fret (F)

Major Pentatonic Scales

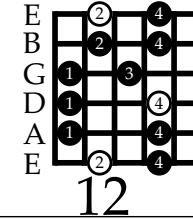
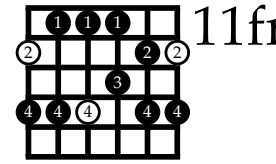
Notes



Scale Degrees



Finger Numbers



E Major Pentatonic Scale E \flat Major Pentatonic Scale D \sharp Major Pentatonic Scale

D Major Pentatonic Scale D \flat Major Pentatonic Scale C \sharp Major Pentatonic Scale C Major Pentatonic Scale

B Major Pentatonic Scale B \flat Major Pentatonic Scale A \sharp Major Pentatonic Scale

A Major Pentatonic Scale A \flat Major Pentatonic Scale G \sharp Major Pentatonic Scale

G Major Pentatonic Scale G \flat Major Pentatonic Scale F \sharp Major Pentatonic Scale F Major Pentatonic Scale

♩ = 60 - 120+

E Major Pentatonic Scale

1 E & A 2 E & A 1 E & A 2 E & A 1 E & A 2 E & A 1 E & A 2 E & A 1 E & A 2 E & A 1 E & A 2 E & A 1

12-12-14-14 11-11-14-14 11-11-13-13 12-12-14-14 12-12-14-14 14-14-12-12 14-14-12-12 13-13-11-11 14-14-11-11 14-14-11-11 14-14-12-12 12

2 4 1 4 1 4 1 3 2 4 2 4 4 2 4 2 3 1 4 1 4 1 4 2 2

12th fret (E) 11th fret 10th fret (D) 9th fret 8th fret (C) 7th fret (B) 6th fret 5th fret (A) 4th fret 3rd fret (G) 2nd fret 1st fret (F)

♩ = 60 - 120+

E Major Pentatonic Scale

1 E & A 2 E & A 1 E & A 2 E & A 1 E & A 2 E & A 1

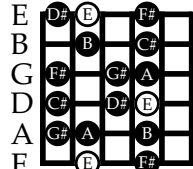
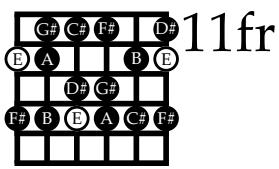
12-14 12-14 14-12 14-12 13-11 14-11 14-11 14-12 12

2 4 1 4 1 4 1 3 2 4 2 4 4 2 4 2 3 1 4 1 4 1 4 2 2

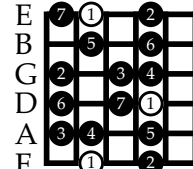
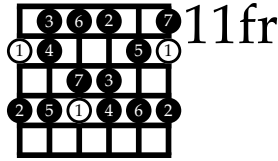
12th fret (E) 11th fret 10th fret (D) 9th fret 8th fret (C) 7th fret (B) 6th fret 5th fret (A) 4th fret 3rd fret (G) 2nd fret 1st fret (F)

Major Scales (Ionian Modes)

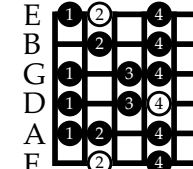
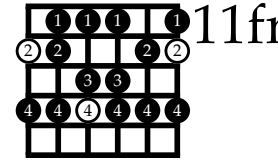
Notes



Scale Degrees



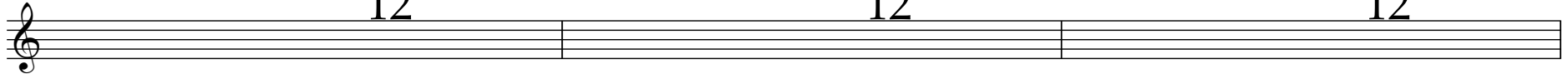
Finger Numbers



12

12

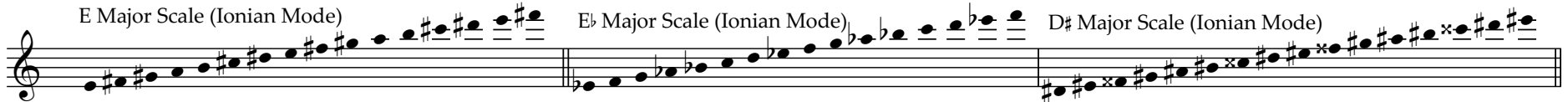
12



E Major Scale (Ionian Mode)

E \flat Major Scale (Ionian Mode)

D \sharp Major Scale (Ionian Mode)



D Major Scale (Ionian Mode)

D \flat Major Scale (Ionian Mode)

C \sharp Major Scale (Ionian Mode)

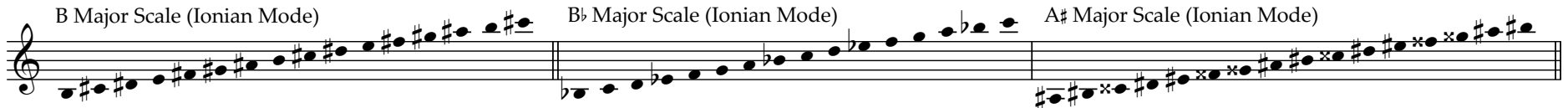
C Major Scale (Ionian Mode)



B Major Scale (Ionian Mode)

B \flat Major Scale (Ionian Mode)

A \sharp Major Scale (Ionian Mode)



A Major Scale (Ionian Mode)

A \flat Major Scale (Ionian Mode)

G \sharp Major Scale (Ionian Mode)



G Major Scale (Ionian Mode)

G \flat Major Scale (Ionian Mode)

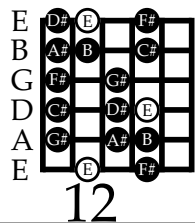
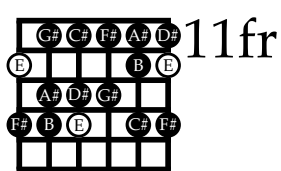
F \sharp Major Scale (Ionian Mode)

F Major Scale (Ionian Mode)

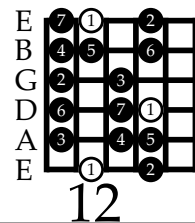
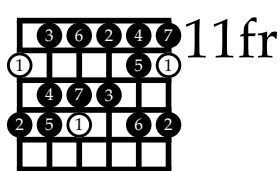


Lydian Modes

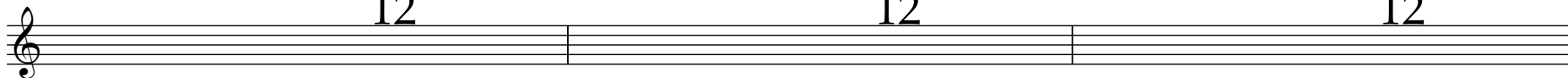
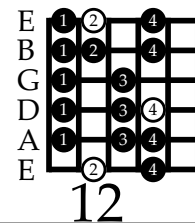
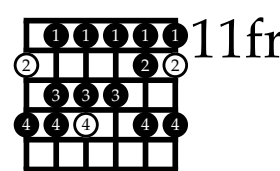
Notes



Scale Degrees



Finger Numbers



E Lydian Mode E \flat Lydian Mode D \sharp Lydian Mode

D Lydian Mode D \flat Lydian Mode C \sharp Lydian Mode C Lydian Mode

B Lydian Mode B \flat Lydian Mode A \sharp Lydian Mode

A Lydian Mode A \flat Lydian Mode G \sharp Lydian Mode

G Lydian Mode G \flat Lydian Mode F \sharp Lydian Mode F Lydian Mode

♩ = 60 - 120+
E Lydian Mode

1 & 2 & 1 & 2 & 1 & 2 & 1 & 2

6 6 6 6 6 6 6 6

12-12-12-14-14-14 11-11-11-13-13-13 14-14-14 11-11-11-13-13-13 14-14-14 11-11-11-12-12-12 14-14-14 11-11-11-12-12-12-14-14-14

2 4 1 3 4 1 3 4 1 3 1 2 4 1 2 4

1 & 2 & 1 & 2 & 1 & 2 & 1 & 2 & 1

6 6 6 6 6 6 6 6

14-14-14-12-12-12 14-14-14 12-12-12-11-11-11 13-13-13-11-11-11 14-14-14-13-13-13 14-14-14 13-13-13-11-11-11 14-14-14-12-12-12

4 2 1 4 2 1 3 1 4 3 1 4 3 1 4 2 2

12th fret (E) 11th fret 10th fret (D) 9th fret 8th fret (C) 7th fret (B) 6th fret 5th fret (A) 4th fret 3rd fret (G) 2nd fret 1st fret (F)

♩ = 60 - 120+
E Lydian Mode

1 & 2 & 1 & 2 & 1 & 2

6 6 6 6 6

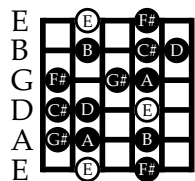
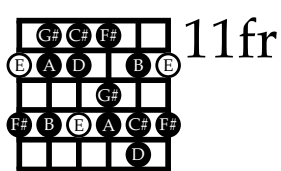
11-12 14-11-12-12-11 14-12-11 13-11 14-13 11-14-13-11 14-12-12

2 4 1 3 4 1 3 4 1 3 1 2 4 1 2 2 1 4 2 1 3 1 4 3 1 4 3 1 4 2 2

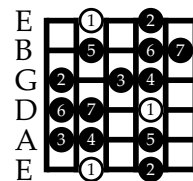
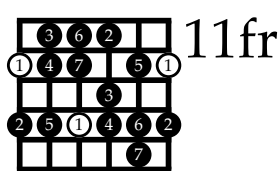
12th fret (E) 11th fret 10th fret (D) 9th fret 8th fret (C) 7th fret (B) 6th fret 5th fret (A) 4th fret 3rd fret (G) 2nd fret 1st fret (F)

Mixolydian Modes

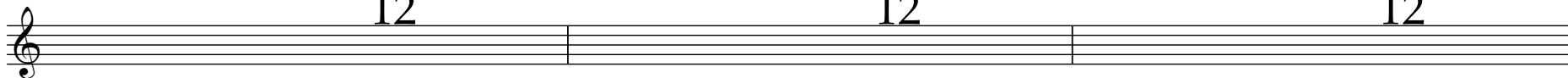
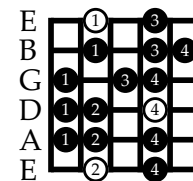
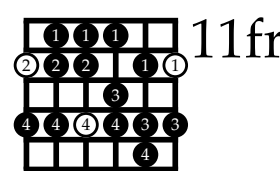
Notes



Scale Degrees



Finger Numbers



E Mixolydian Mode E \flat Mixolydian Mode D# Mixolydian Mode

D Mixolydian Mode D \flat Mixolydian Mode C# Mixolydian Mode C Mixolydian Mode

B Mixolydian Mode B \flat Mixolydian Mode A# Mixolydian Mode

A Mixolydian Mode A \flat Mixolydian Mode G# Mixolydian Mode

G Mixolydian Mode G \flat Mixolydian Mode F# Mixolydian Mode F Mixolydian Mode

♩ = 60 - 120+

E Mixolydian Mode

1 E & A 2 E & A 1 E & A 2 E & A 1 E & A 2 E & A 1 E & A 2 E & A 1 E & A 2 E & A 1 E & A 2 E & A 1 E & A 2 E & A 1 E & A 2 E & A 1

2 4 1 2 4 1 2 4 1 3 4 /1 3 4 1 3 3 1 4 3 1 \4 3 1 4 2 1 4 2 1 4 2 2

12th fret (E) 11th fret 10th fret (D) 9th fret 8th fret (C) 7th fret (B) 6th fret 5th fret (A) 4th fret 3rd fret (G) 2nd fret 1st fret (F)

♩ = 60 - 120+

E Mixolydian Mode

1 E & A 2 E & A 1 E & A 2 E & A 1 E & A 2 E & A 1 E & A 2 E & A 1

2 4 1 2 4 1 2 4 1 3 4 /1 3 4 1 3 3 1 4 3 1 \4 3 1 4 2 1 4 2 1 4 2 2

12th fret (E) 11th fret 10th fret (D) 9th fret 8th fret (C) 7th fret (B) 6th fret 5th fret (A) 4th fret 3rd fret (G) 2nd fret 1st fret (F)

