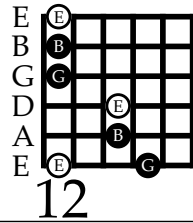
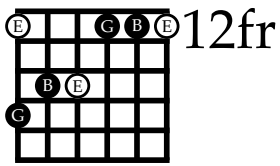


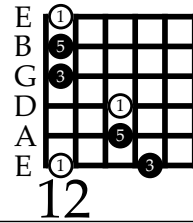
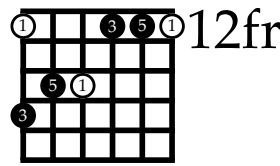
Unit 2: Minor Chords, Scales, and Modes

Minor Chord Arpeggios

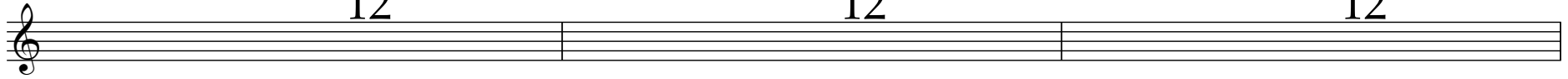
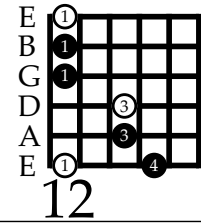
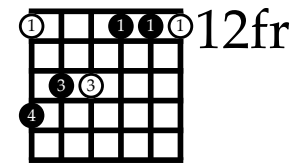
Notes



Scale Degrees



Finger Numbers



E Minor Chord E \flat Minor Chord D \sharp Minor Chord D Minor Chord D \flat Minor Chord C \sharp Minor Chord

C Minor Chord B Minor Chord B \flat Minor Chord A \sharp Minor Chord A Minor Chord A \flat Minor Chord

G \sharp Minor Chord G Minor Chord G \flat Minor Chord F \sharp Minor Chord F Minor Chord

Minor Chord Arpeggio 16th Note Exercises

♩ = 60 - 120+

E Minor Chord

1 E & A 2 E & A 1 E & A 2 E & A 1 E & A 2 E & A 1 E & A 2 E & A 1 E & A 2 E & A 1 E & A 2 E & A 1

12-12-12-12-15-15-15-15 14-14-14-14 12-12-12-12 12-12-12-12 12-12-12-12 12-12-12-12 12-12-12-12 14-14-14-14 14-14-14-14 15-15-15-15 12

1 4 3 3 1 1 1 1 1 3 3 4 1

12th fret (E) 11th fret 10th fret (D) 9th fret 8th fret (C) 7th fret (B) 6th fret 5th fret (A) 4th fret 3rd fret (G) 2nd fret 1st fret (F)

♩ = 60 - 120+

E Minor Chord

1 E & A 2 E & A 1 E & A 2 E & A 1 E & A 2 E & A 1

12-12-15-15 14-14 14-14 12-12 12-12 12-12 12-12 12-12 14-14 14-14 15-15 12

1 4 3 3 1 1 1 1 1 3 3 4 1

12th fret (E) 11th fret 10th fret (D) 9th fret 8th fret (C) 7th fret (B) 6th fret 5th fret (A) 4th fret 3rd fret (G) 2nd fret 1st fret (F)

12th fret (E) 11th fret 10th fret (D) 9th fret 8th fret (C) 7th fret (B) 6th fret 5th fret (A) 4th fret 3rd fret (G) 2nd fret 1st fret (F)

♩ = 60 - 120+

E Minor Chord

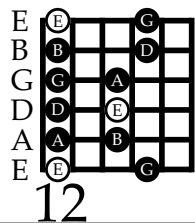
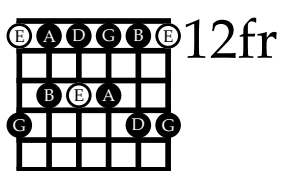
1 E & A 2 E & A 1 E & A 2

12-12-12-12 12-12-12-12 12-12-12-12 12-12-12-12 12-12-12-12 12-12-12-12 12-15 14-14 14-14 15-12

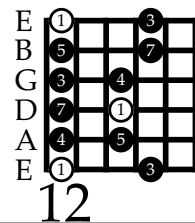
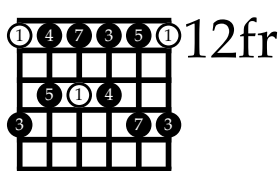
1 4 3 3 1 1 1 1 1 3 3 4 1

Minor Pentatonic Scales

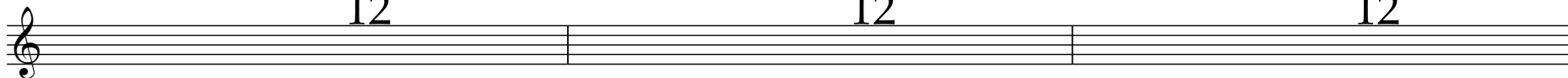
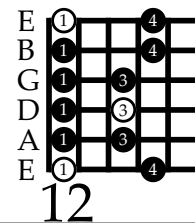
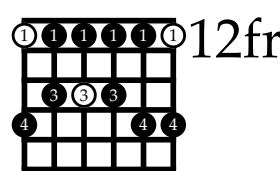
Notes



Scale Degrees



Finger Numbers



E Minor Pentatonic Scale E \flat Minor Pentatonic Scale D \sharp Minor Pentatonic Scale

D Minor Pentatonic Scale D \flat Minor Pentatonic Scale C \sharp Minor Pentatonic Scale C Minor Pentatonic Scale

B Minor Pentatonic Scale B \flat Minor Pentatonic Scale A \sharp Minor Pentatonic Scale

A Minor Pentatonic Scale A \flat Minor Pentatonic Scale G \sharp Minor Pentatonic Scale

G Minor Pentatonic Scale G \flat Minor Pentatonic Scale F \sharp Minor Pentatonic Scale F Minor Pentatonic Scale

♩ = 60 - 120+

E Minor Pentatonic Scale

1 E & A 2 E & A 1 E & A 2 E & A 1 E & A 2 E & A 1 E & A 2 E & A 1 E & A 2 E & A 1 E & A 2 E & A 1

12-12-15-15 12-12-14-14 12-12-14-14 12-12-15-15 12-12-15-15 15-15-12-12 15-15-12-12 14-14-12-12 14-14-12-12 14-14-12-12 15-15-12-12 12

1 4 1 3 1 3 1 3 1 4 1 4 4 1 4 1 3 1 3 1 3 1 3 1 4 1 1

12th fret (E) 11th fret 10th fret (D) 9th fret 8th fret (C) 7th fret (B) 6th fret 5th fret (A) 4th fret 3rd fret (G) 2nd fret 1st fret (F)

♩ = 60 - 120+

E Minor Pentatonic Scale

1 E & A 2 E & A 1 E & A 2 E & A 1 E & A 2 E & A 1

12-15 12-15 15-12 15-12 14-12 14-12 14-12 15-12 12

1 4 1 3 1 3 1 3 1 4 1 4 4 1 4 1 3 1 3 1 3 1 4 1 1

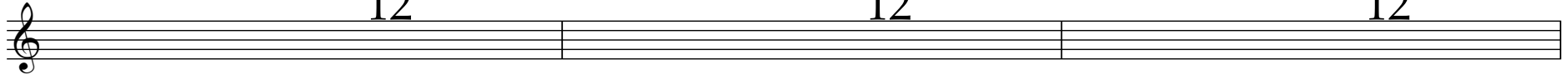
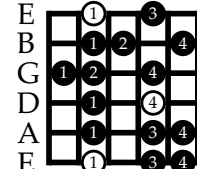
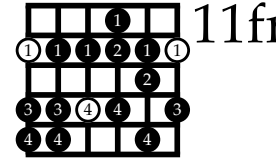
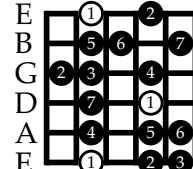
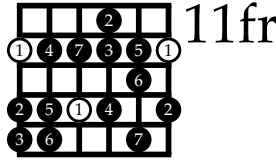
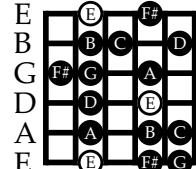
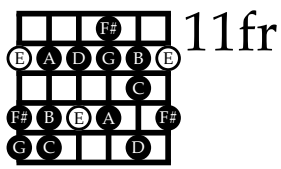
12th fret (E) 11th fret 10th fret (D) 9th fret 8th fret (C) 7th fret (B) 6th fret 5th fret (A) 4th fret 3rd fret (G) 2nd fret 1st fret (F)

Natural Minor Scales (Aeolian Modes)

Notes

Scale Degrees

Finger Numbers



E Natural Minor Scale (Aeolian Mode)

E^b Natural Minor Scale (Aeolian Mode)

D[#] Natural Minor Scale (Aeolian Mode)



D Natural Minor Scale (Aeolian Mode)

D^b Natural Minor Scale (Aeolian Mode)

C[#] Natural Minor Scale (Aeolian Mode)

C Natural Minor Scale (Aeolian Mode)



B Natural Minor Scale (Aeolian Mode)

B^b Natural Minor Scale (Aeolian Mode)

A[#] Natural Minor Scale (Aeolian Mode)



A Natural Minor Scale (Aeolian Mode)

A^b Natural Minor Scale (Aeolian Mode)

G[#] Natural Minor Scale (Aeolian Mode)



G Natural Minor Scale (Aeolian Mode)

G^b Natural Minor Scale (Aeolian Mode)

F[#] Natural Minor Scale (Aeolian Mode)

F Natural Minor Scale (Aeolian Mode)



♩ = 60 - 120+

E Natural Minor Scale (Aeolian Mode)

1 & 2 & 1 & 2 & 1 & 2 & 1 & 2

12-12-12-14-14-14-15-15-15 12-12-12 14-14-14-15-15-15 12-12-12-14-14-14 11-11-11-12-12-12-14-14-14 12-12-12 13-13-13-15-15-15 12-12-12-14-14-14

1 3 4 1 3 4 1 \4 1 2 4 /1 2 4 1 3

1 & 2 & 1 & 2 & 1 & 2 & 1 & 2

14-14-14-12-12-12 15-15-15-13-13-13 12-12-12 14-14-14-12-12-12-11-11-11 14-14-14-12-12-12 15-15-15-14-14-14 12-12-12 15-15-15-14-14-14-12-12-12 12

3 1 4 2 1 \4 2 1 4 /1 4 3 1 4 3 1 1

12th fret (E) 11th fret 10th fret (D) 9th fret 8th fret (C) 7th fret (B) 6th fret 5th fret (A) 4th fret 3rd fret (G) 2nd fret 1st fret (F)

♩ = 60 - 120+

E Natural Minor Scale (Aeolian Mode)

1 & 2 & 1 & 2

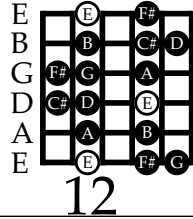
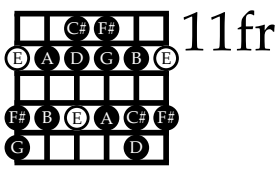
12-14-15 12-14-15 12-14 11-12-14 12 13-15 12-12 15-13-12 14-12-11 14-12 15-14-12 15-14-12-12

1 3 4 1 3 4 1 \4 1 2 4 /1 2 4 1 1 4 2 1 \4 2 1 4 /1 4 3 1 4 3 1 1

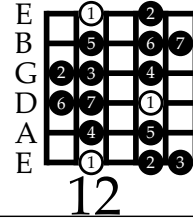
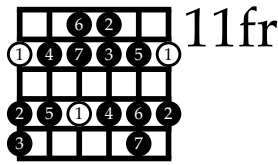
12th fret (E) 11th fret 10th fret (D) 9th fret 8th fret (C) 7th fret (B) 6th fret 5th fret (A) 4th fret 3rd fret (G) 2nd fret 1st fret (F)

Dorian Modes

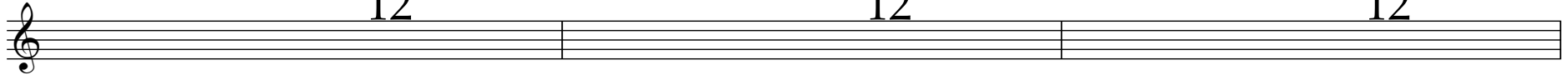
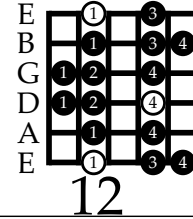
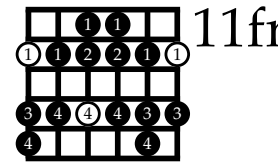
Notes



Scale Degrees



Finger Numbers



E Dorian Mode E \flat Dorian Mode D \sharp Dorian Mode

D Dorian Mode D \flat Dorian Mode C \sharp Dorian Mode C Dorian Mode

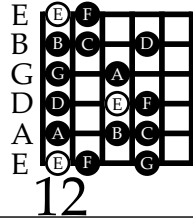
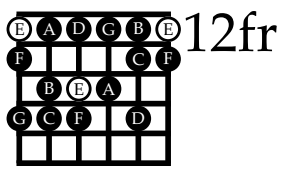
B Dorian Mode B \flat Dorian Mode A \sharp Dorian Mode

A Dorian Mode A \flat Dorian Mode G \sharp Dorian Mode

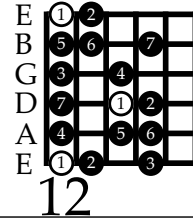
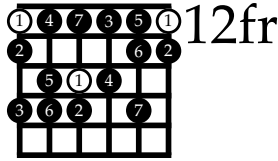
G Dorian Mode G \flat Dorian Mode F \sharp Dorian Mode F Dorian Mode

Phrygian Modes

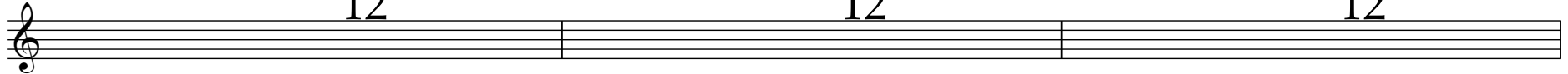
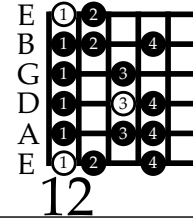
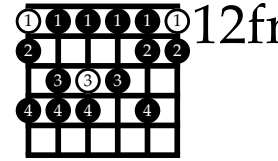
Notes



Scale Degrees



Finger Numbers



E Phrygian Mode E \flat Phrygian Mode D \sharp Phrygian Mode

Three musical staves showing the ascending and descending scales for E Phrygian, E \flat Phrygian, and D \sharp Phrygian modes.

D Phrygian Mode D \flat Phrygian Mode C \sharp Phrygian Mode C Phrygian Mode

Four musical staves showing the ascending and descending scales for D Phrygian, D \flat Phrygian, C \sharp Phrygian, and C Phrygian modes.

B Phrygian Mode B \flat Phrygian Mode A \sharp Phrygian Mode

Three musical staves showing the ascending and descending scales for B Phrygian, B \flat Phrygian, and A \sharp Phrygian modes.

A Phrygian Mode A \flat Phrygian Mode G \sharp Phrygian Mode

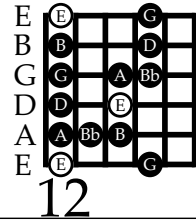
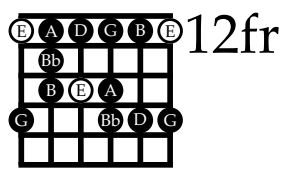
Three musical staves showing the ascending and descending scales for A Phrygian, A \flat Phrygian, and G \sharp Phrygian modes.

G Phrygian Mode G \flat Phrygian Mode F \sharp Phrygian Mode F Phrygian Mode

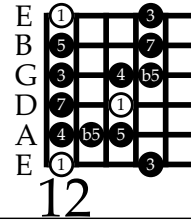
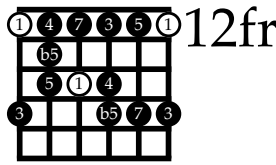
Four musical staves showing the ascending and descending scales for G Phrygian, G \flat Phrygian, F \sharp Phrygian, and F Phrygian modes.

Blues Scales

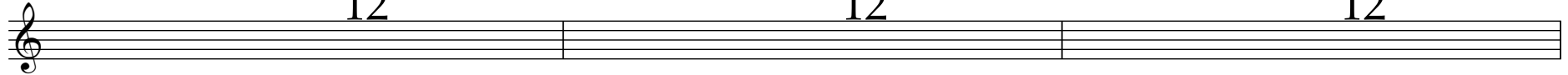
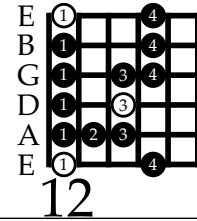
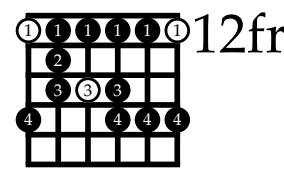
Notes



Scale Degrees



Finger Numbers



E Blues Scale Eb Blues Scale D# Blues Scale

Musical notation for the E Blues Scale, Eb Blues Scale, and D# Blues Scale. Each scale is shown as a sequence of notes on a treble clef staff, with a double bar line at the end of each.

D Blues Scale Db Blues Scale C# Blues Scale C Blues Scale

Musical notation for the D Blues Scale, Db Blues Scale, C# Blues Scale, and C Blues Scale. Each scale is shown as a sequence of notes on a treble clef staff, with a double bar line at the end of each.

B Blues Scale Bb Blues Scale A# Blues Scale

Musical notation for the B Blues Scale, Bb Blues Scale, and A# Blues Scale. Each scale is shown as a sequence of notes on a treble clef staff, with a double bar line at the end of each.

A Blues Scale Ab Blues Scale G# Blues Scale

Musical notation for the A Blues Scale, Ab Blues Scale, and G# Blues Scale. Each scale is shown as a sequence of notes on a treble clef staff, with a double bar line at the end of each.

G Blues Scale Gb Blues Scale F# Blues Scale F Blues Scale

Musical notation for the G Blues Scale, Gb Blues Scale, F# Blues Scale, and F Blues Scale. Each scale is shown as a sequence of notes on a treble clef staff, with a double bar line at the end of each.

