

# Circle of Fifths

The diagram illustrates the Circle of Fifths with 12 musical staves, each representing a different key signature. The staves are arranged in a circular pattern, with the following key signatures from top to bottom:

- No #/b
- 1 b
- 1 #
- 2 b
- 2 #
- 3 b
- 3 #
- 4 b
- 4 #
- 5 b
- 5 #
- 6 b
- 6 #
- 7 #

Each staff consists of a five-line musical staff with a treble clef and a single note on the middle line (F4). The key signature is indicated by a sharp (#) or flat (b) symbol followed by a number, and a blank line for the name of the key.

## RULES

Alternate line, space, line, etc.

(or space, line, space, etc.)

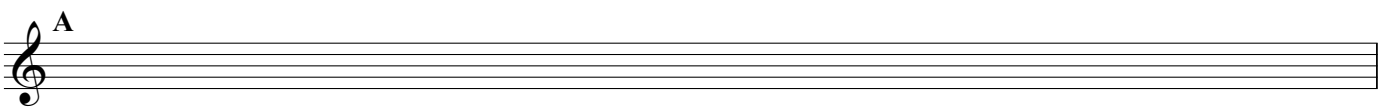
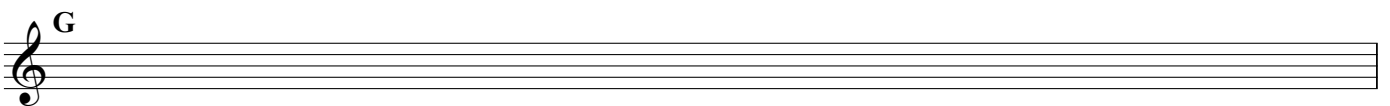
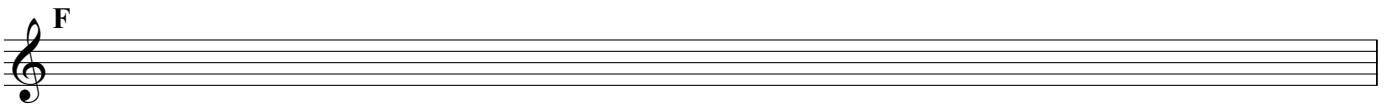
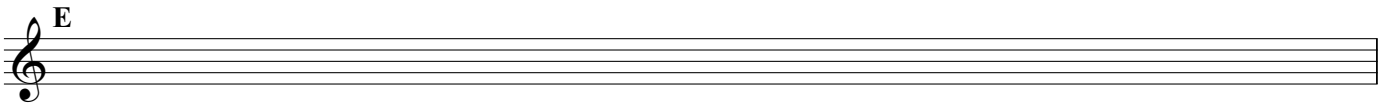
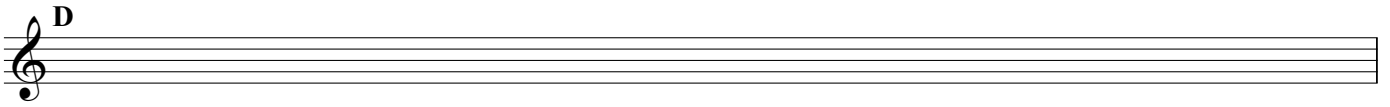
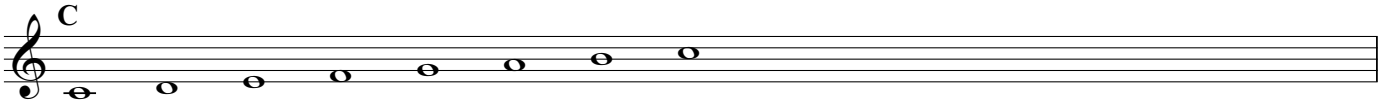
1, 1, 1/2, 1, 1, 1, 1/2 (W, W, H, W, W, W, H)

Start and end on same note

one of every note (no G and G# in the same key)

## Major Scales

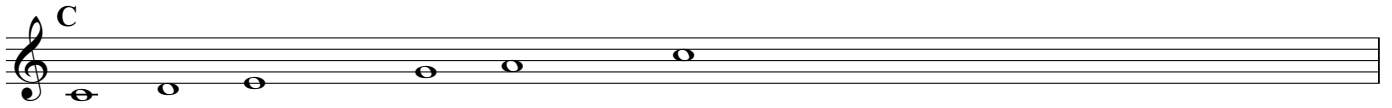
W,W,H,W,W,W,H



# Major Pentatonic Scales

Leave out the 4th and 7th notes of the major scale.

C



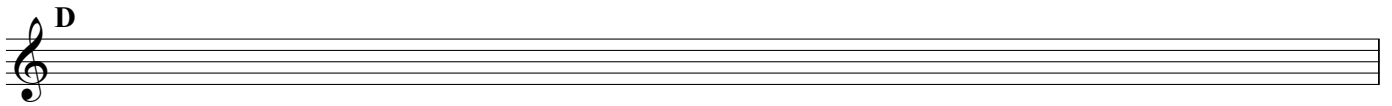
A musical staff in treble clef showing the C major pentatonic scale. The notes are C, D, E, G, and A, written as half notes.

C#



A musical staff in treble clef showing the C# major pentatonic scale. The notes are C#, D#, E, G#, and A#, written as half notes.

D



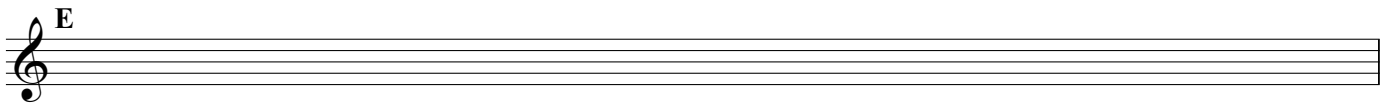
A musical staff in treble clef showing the D major pentatonic scale. The notes are D, E, F#, G, and A, written as half notes.

D#



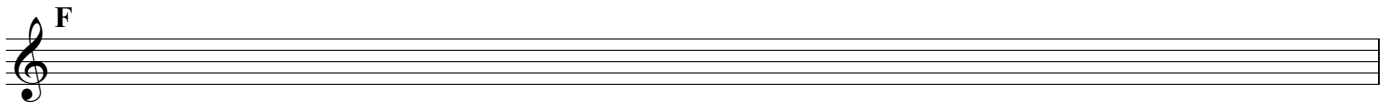
A musical staff in treble clef showing the D# major pentatonic scale. The notes are D#, E#, F#, G#, and A#, written as half notes.

E



A musical staff in treble clef showing the E major pentatonic scale. The notes are E, F#, G, A, and B, written as half notes.

F



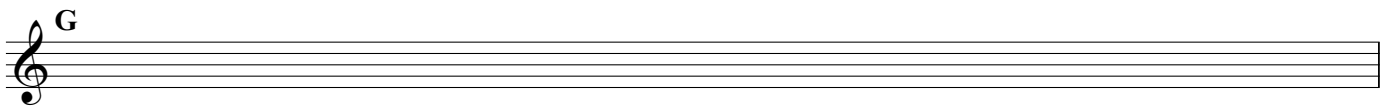
A musical staff in treble clef showing the F major pentatonic scale. The notes are F, G, A, C, and D, written as half notes.

F#



A musical staff in treble clef showing the F# major pentatonic scale. The notes are F#, G#, A, C#, and D#, written as half notes.

G



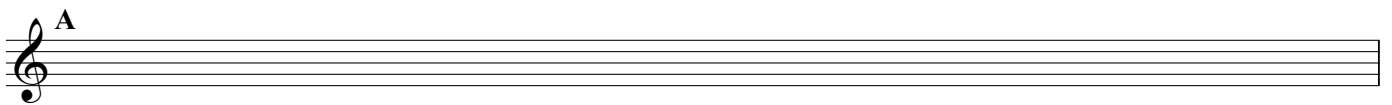
A musical staff in treble clef showing the G major pentatonic scale. The notes are G, A, B, D, and E, written as half notes.

G#



A musical staff in treble clef showing the G# major pentatonic scale. The notes are G#, A#, B, D#, and E#, written as half notes.

A



A musical staff in treble clef showing the A major pentatonic scale. The notes are A, B, C, E, and F#, written as half notes.

A#



A musical staff in treble clef showing the A# major pentatonic scale. The notes are A#, B#, C, E#, and F#, written as half notes.

B



A musical staff in treble clef showing the B major pentatonic scale. The notes are B, C, D, F, and G, written as half notes.

# Relative Natural Minor Scales

Start and end on the 6th note of the major scale (using the same key signature).

The image displays 12 musical staves, each representing a relative natural minor scale. The scales are arranged in pairs, with the major scale starting on the 6th note of the previous major scale. The scales are:

- Staff 1: Scale starting on **a** (6th note of G major).
- Staff 2: Scale starting on **a#** (6th note of A major), followed by a scale starting on **b♭** (6th note of B major).
- Staff 3: Scale starting on **b** (6th note of B major).
- Staff 4: Scale starting on **b#** (6th note of C major), followed by a scale starting on **c** (6th note of C major).
- Staff 5: Scale starting on **c#** (6th note of D major).
- Staff 6: Scale starting on **d** (6th note of D major).
- Staff 7: Scale starting on **d#** (6th note of E major), followed by a scale starting on **e♭** (6th note of F major).
- Staff 8: Scale starting on **e** (6th note of E major).
- Staff 9: Scale starting on **e#** (6th note of F major), followed by a scale starting on **f** (6th note of F major).
- Staff 10: Scale starting on **f#** (6th note of G major).
- Staff 11: Scale starting on **f#** (6th note of A major), followed by a scale starting on **g** (6th note of A major).
- Staff 12: Scale starting on **g#** (6th note of B major), followed by a scale starting on **a♭** (6th note of C major).

# Minor Pentatonic Scales

Leave out the 2nd and 6th notes of the natural minor scale.

**a**

**a#** | **b<sup>b</sup>**

**b**

**b#** | **c**

**c#**

**d**

**d#** | **e<sup>b</sup>**

**e**

**e#** | **f**

**f#**

**f<sup>x</sup>** | **g**

**g#** | **a<sup>b</sup>**

# Harmonic Minor Scales

Raise the 7th note of the natural minor scale a half-step.

The image displays 12 musical staves, each representing a different harmonic minor scale. The scales are written in treble clef. The first staff shows the notes of the A natural minor scale: A, B, C, D, E, F, G, A. The 7th note, G, is raised a half-step to G# (labeled 'a'). The remaining 11 staves are empty, with only the starting note of each scale indicated by a treble clef and a sharp or flat symbol. The starting notes are: A# (labeled 'a#'), Bb (labeled 'b'), B# (labeled 'b#'), C (labeled 'c'), C# (labeled 'c#'), D (labeled 'd'), D# (labeled 'd#'), Eb (labeled 'e'), E (labeled 'e'), E# (labeled 'e#'), F (labeled 'f'), F# (labeled 'f#'), F# (labeled 'f#'), G (labeled 'g'), G# (labeled 'g#'), Ab (labeled 'a'), and Ab (labeled 'a').

# Melodic Minor Scales

Raise the 6th and 7th notes of the natural minor scale a half-step when ascending.  
Play the natural minor scale when descending.

**a**

etc.

**a#** | **b<sup>b</sup>**

**b**

**b#** | **c**

**c#**

**d**

**d#** | **e<sup>b</sup>**

**e**

**e#** | **f**

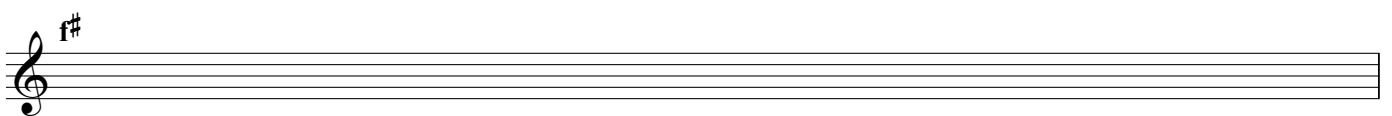
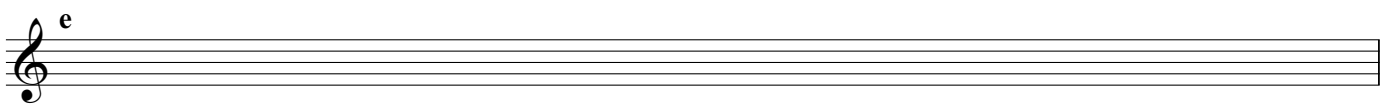
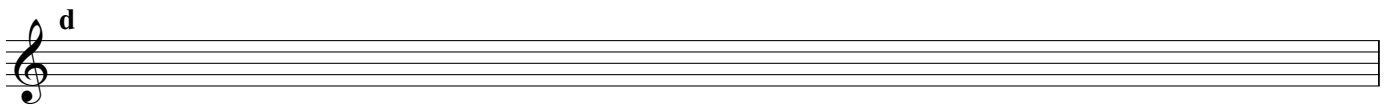
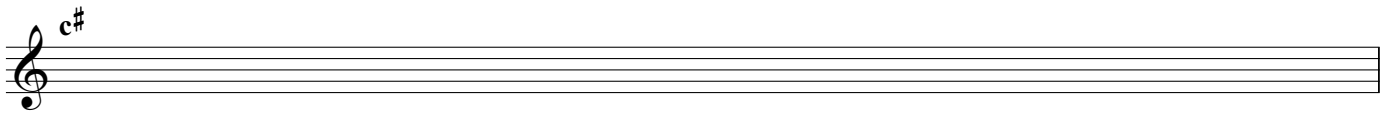
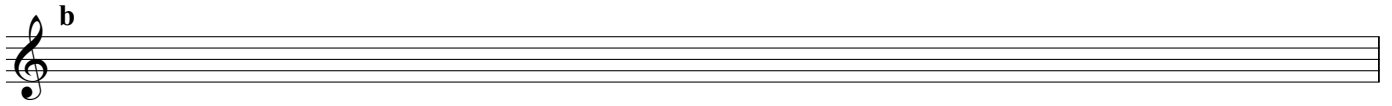
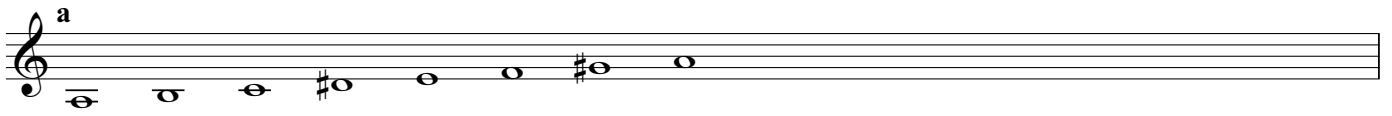
**f#**

**f<sup>x</sup>** | **g**

**g#** | **a<sup>b</sup>**

# Hungarian Minor Scales

Raise the 4th and 7th notes of the natural minor scale a half-step.





# Parallel Natural Minor Scales

Lower the 3rd, 6th, and 7th notes of the major scale a half step.

**c**



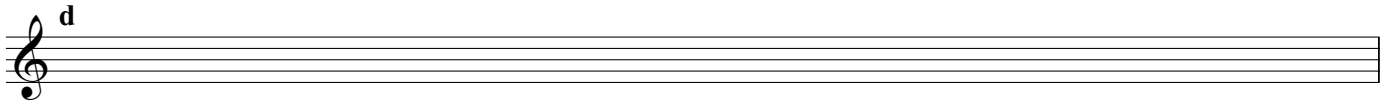
A musical staff in treble clef showing the C major scale: C4 (quarter), D4 (quarter), E4 (quarter), F4 (quarter), G4 (quarter), A4 (quarter), B4 (quarter), C5 (quarter).

**c#** **db**



A musical staff in treble clef showing the C# major scale: C#4 (quarter), D#4 (quarter), E4 (quarter), F#4 (quarter), G#4 (quarter), A#4 (quarter), B4 (quarter), C#5 (quarter).

**d**



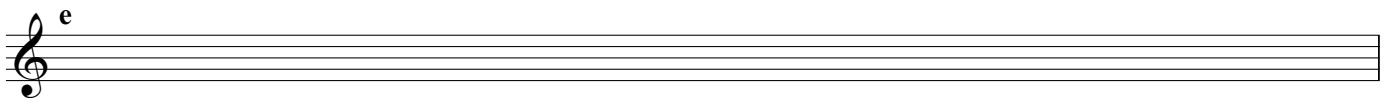
A musical staff in treble clef showing the D major scale: D4 (quarter), E4 (quarter), F#4 (quarter), G#4 (quarter), A4 (quarter), B4 (quarter), C#5 (quarter), D5 (quarter).

**d#** **eb**



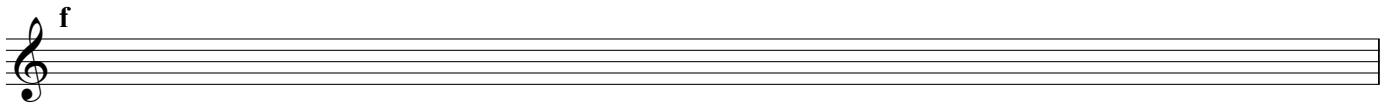
A musical staff in treble clef showing the D# major scale: D#4 (quarter), E#4 (quarter), F#4 (quarter), G#4 (quarter), A#4 (quarter), B#4 (quarter), C#5 (quarter), D#5 (quarter).

**e**



A musical staff in treble clef showing the E major scale: E4 (quarter), F#4 (quarter), G#4 (quarter), A4 (quarter), B4 (quarter), C#5 (quarter), D#5 (quarter), E5 (quarter).

**f**



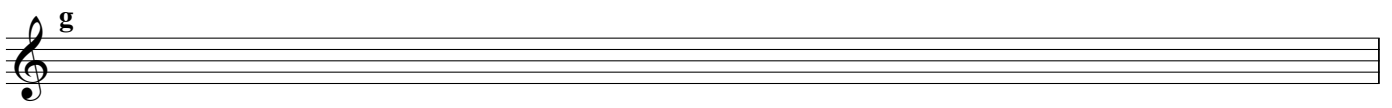
A musical staff in treble clef showing the F major scale: F4 (quarter), G4 (quarter), A4 (quarter), B4 (quarter), C5 (quarter), D5 (quarter), E5 (quarter), F5 (quarter).

**f#** **gb**



A musical staff in treble clef showing the F# major scale: F#4 (quarter), G#4 (quarter), A4 (quarter), B4 (quarter), C5 (quarter), D5 (quarter), E5 (quarter), F#5 (quarter).

**g**



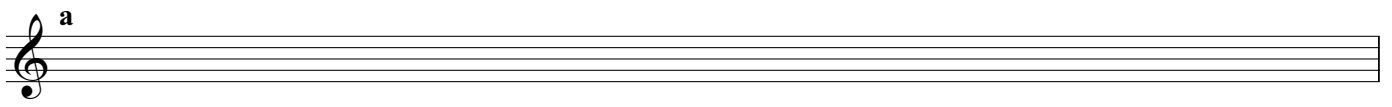
A musical staff in treble clef showing the G major scale: G4 (quarter), A4 (quarter), B4 (quarter), C5 (quarter), D5 (quarter), E5 (quarter), F#5 (quarter), G5 (quarter).

**g#** **ab**



A musical staff in treble clef showing the G# major scale: G#4 (quarter), A#4 (quarter), B4 (quarter), C5 (quarter), D5 (quarter), E5 (quarter), F#5 (quarter), G#5 (quarter).

**a**



A musical staff in treble clef showing the A major scale: A4 (quarter), B4 (quarter), C5 (quarter), D5 (quarter), E5 (quarter), F#5 (quarter), G#5 (quarter), A5 (quarter).

**a#** **bb**



A musical staff in treble clef showing the A# major scale: A#4 (quarter), B#4 (quarter), C5 (quarter), D5 (quarter), E5 (quarter), F#5 (quarter), G#5 (quarter), A#5 (quarter).

**b** **cb**



A musical staff in treble clef showing the B major scale: B4 (quarter), C5 (quarter), D5 (quarter), E5 (quarter), F#5 (quarter), G#5 (quarter), A5 (quarter), B5 (quarter).