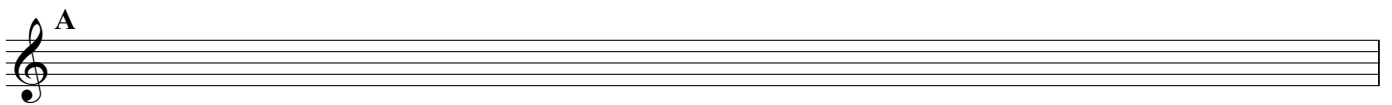
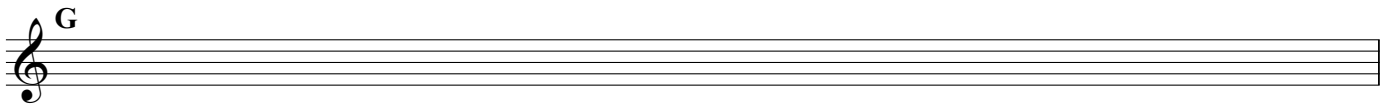
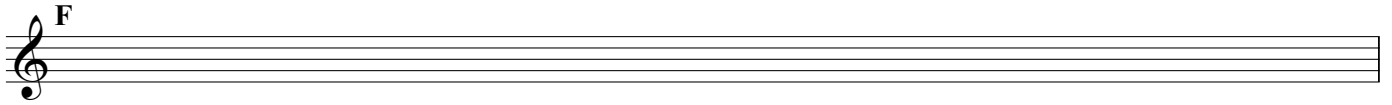
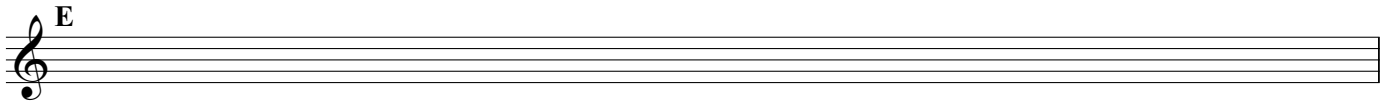
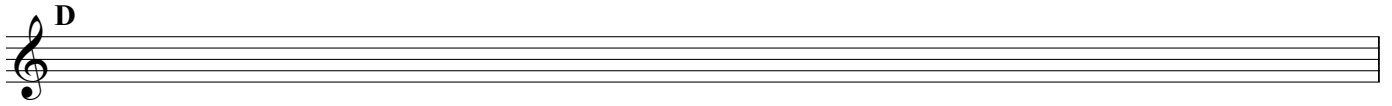
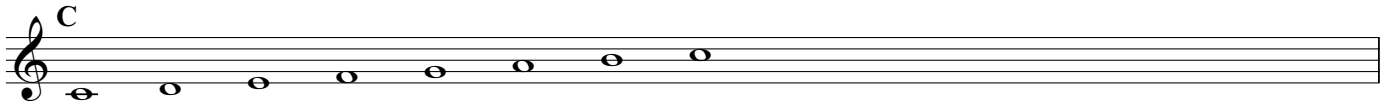


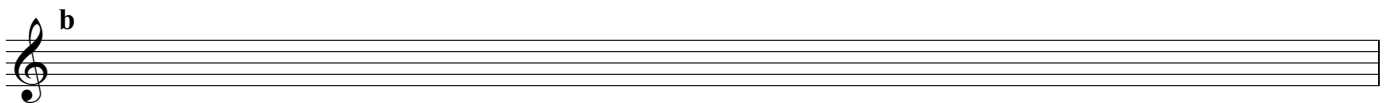
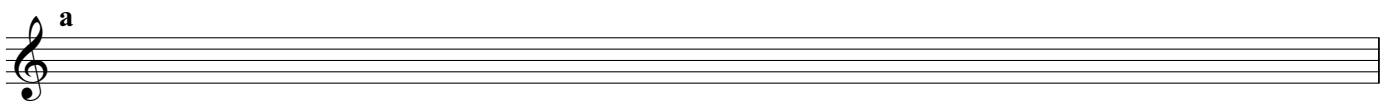
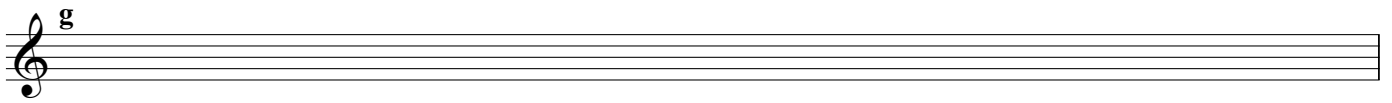
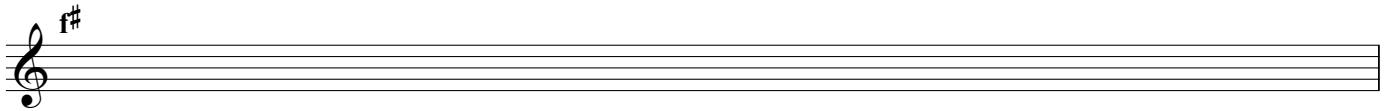
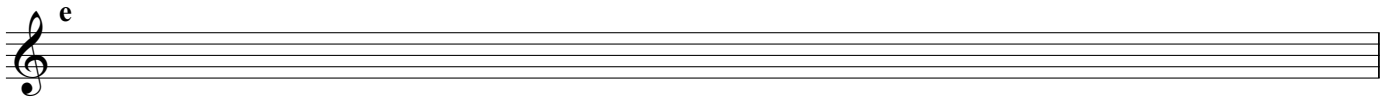
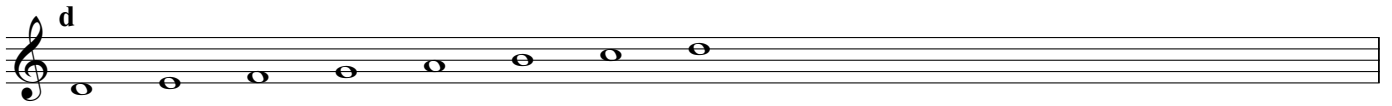
Ionian Modes (Relative)

Start and end on the 1st note of the major scale.



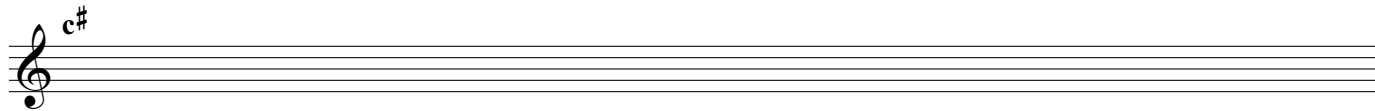
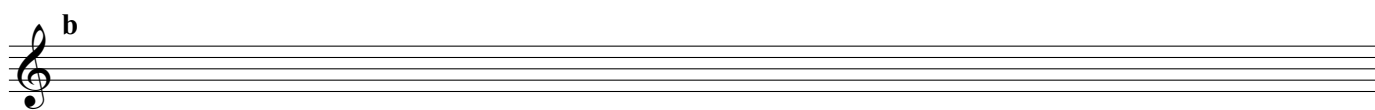
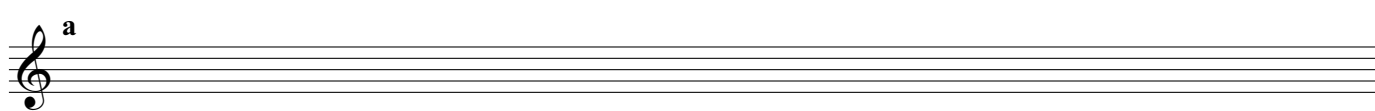
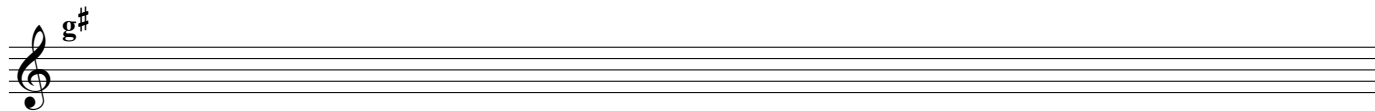
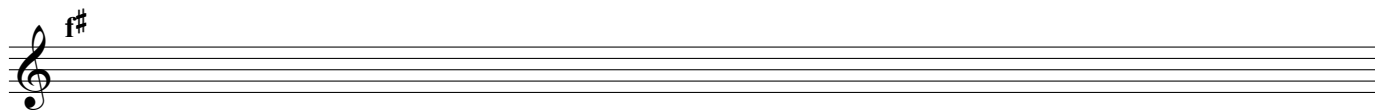
Dorian Modes (Relative)

Start and end on the 2nd note of the major scale.



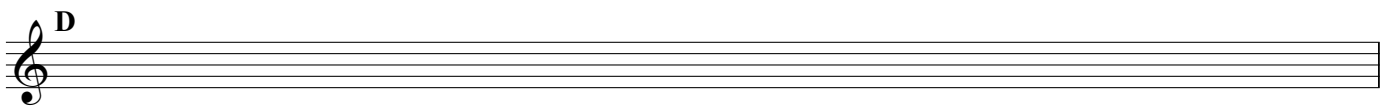
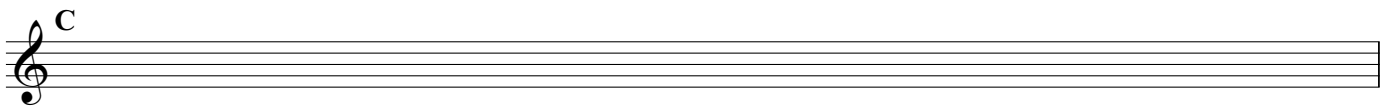
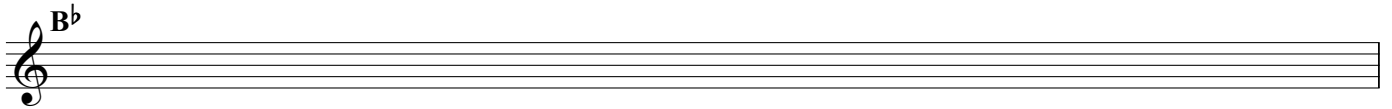
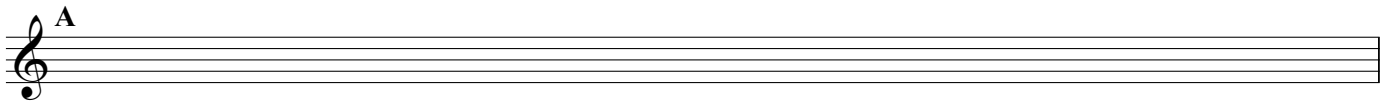
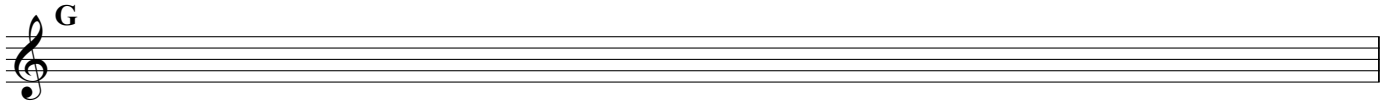
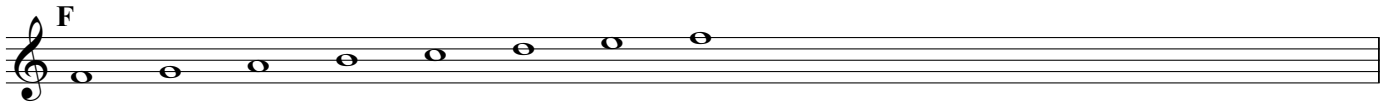
Phrygian Modes (Relative)

Start and end on the 3rd note of the major scale.



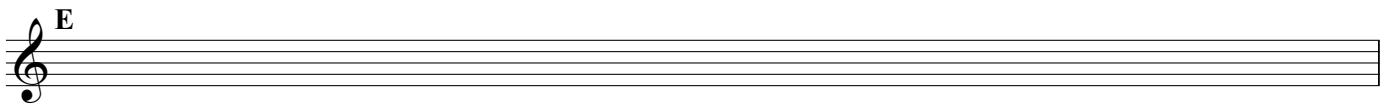
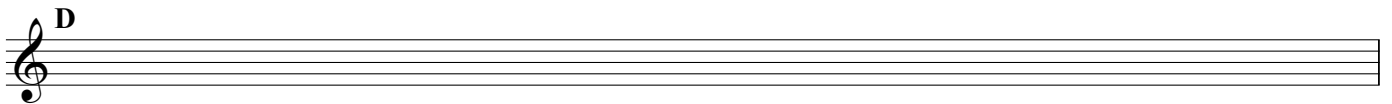
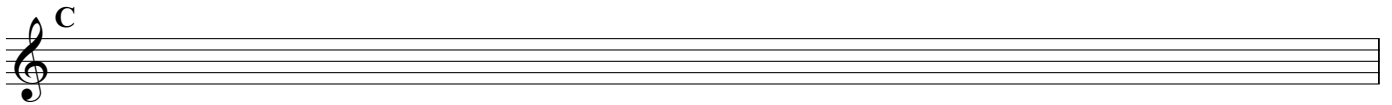
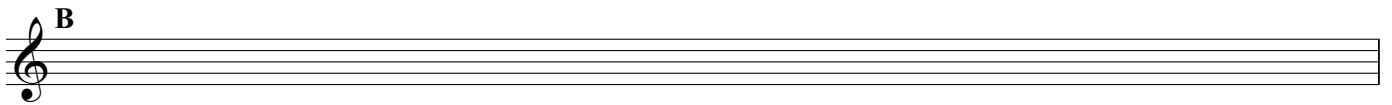
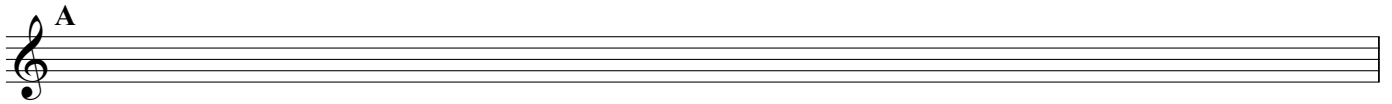
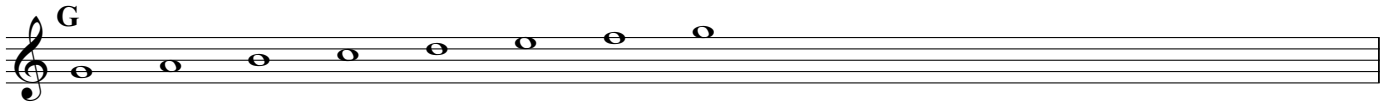
Lydian Modes (Relative)

Start and end on the 4th note of the major scale.



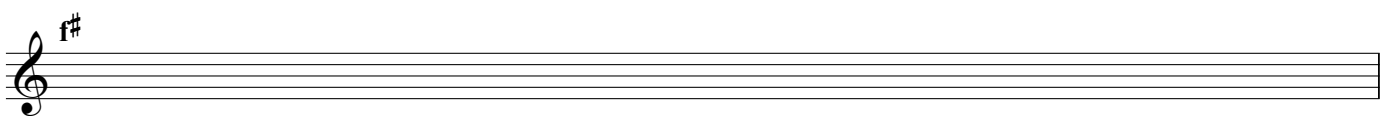
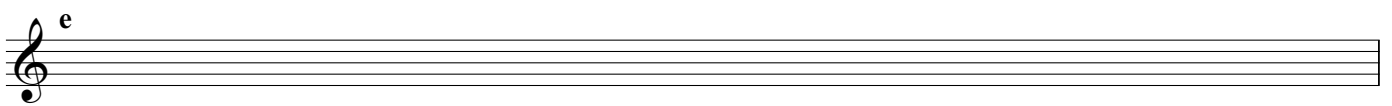
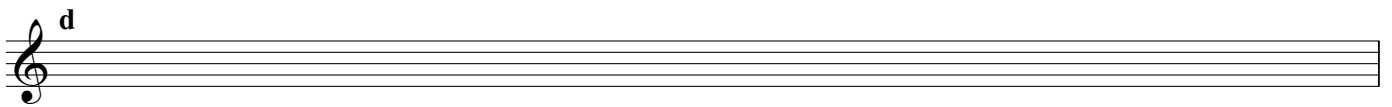
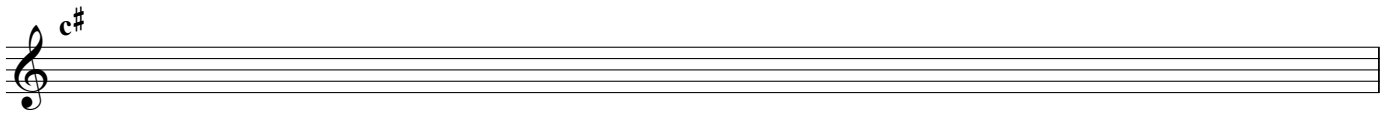
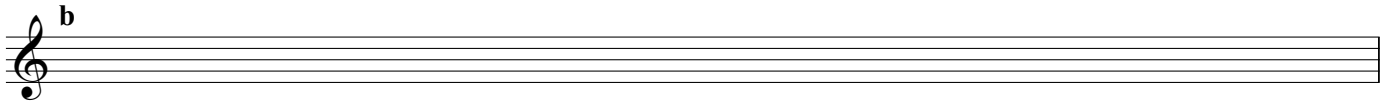
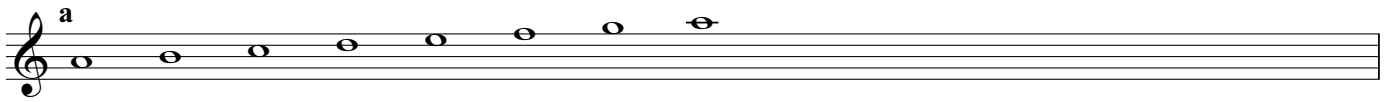
Mixolydian Modes (Relative)

Start and end on the 5th note of the major scale.



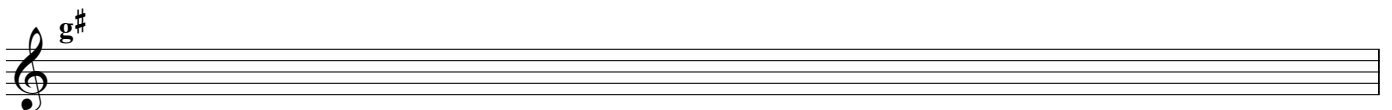
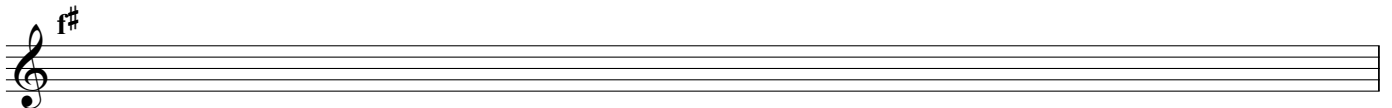
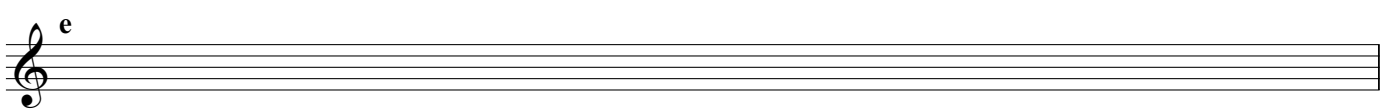
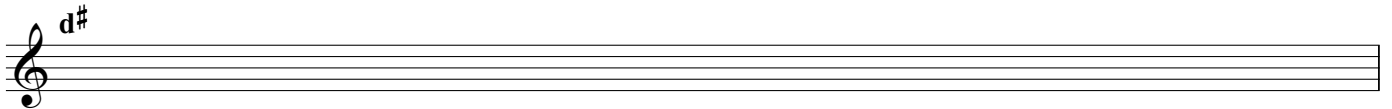
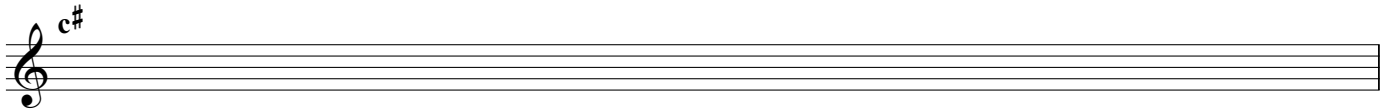
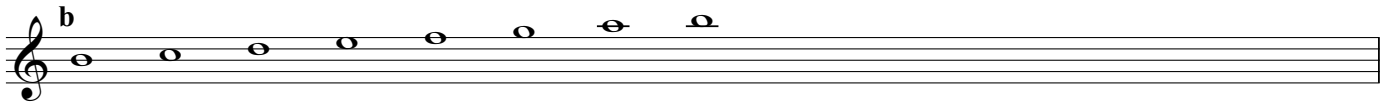
Aeolian Modes (Relative)

Start and end on the 6th note of the major scale.



Locrian Modes (Relative)

Start and end on the 7th note of the major scale.



Lydian Modes (Parallel)

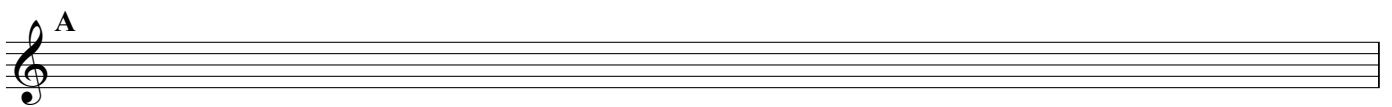
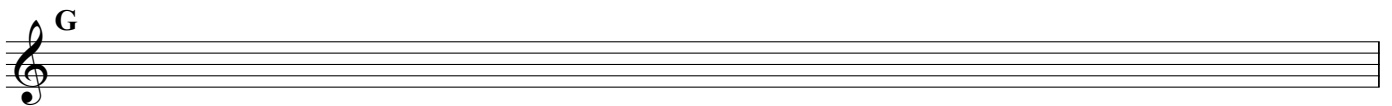
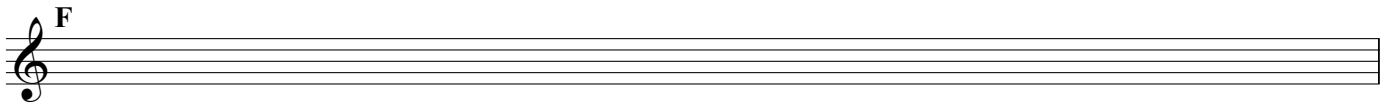
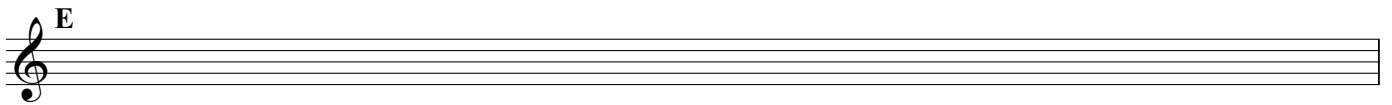
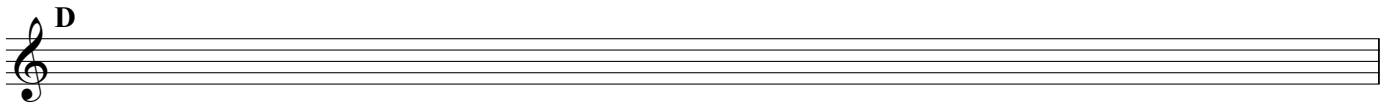
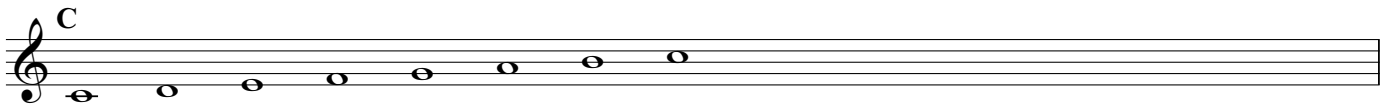
Raise the 4th note of the major scale.

The image displays 12 musical staves, each representing a Lydian mode. The first staff shows the C major scale with the 4th note (F) raised to F#, labeled 'C'. The remaining 11 staves are organized into pairs, with the left staff of each pair showing the natural 4th note and the right staff showing the raised 4th note. The modes and their corresponding raised 4th notes are: C# (D), D# (E), F# (G), G# (A), A# (B), and B (C#). The modes D, E, F, G, and A are shown with their natural 4th notes but no raised 4th notes are indicated.

| Mode | 4th Note | Raised 4th Note |
|------|----------|-----------------|
| C | F | F# |
| C# | D | D |
| D | E | E |
| D# | F | F |
| E | G | G |
| F | A | A |
| F# | B | B |
| G | C | C |
| G# | D | D |
| A | E | E |
| A# | F | F |
| B | G | G |

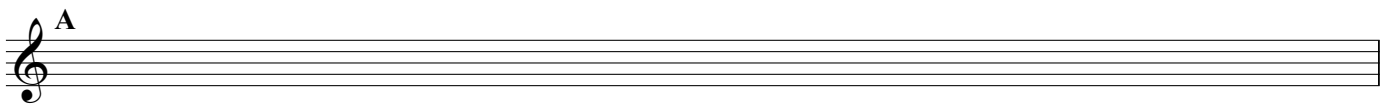
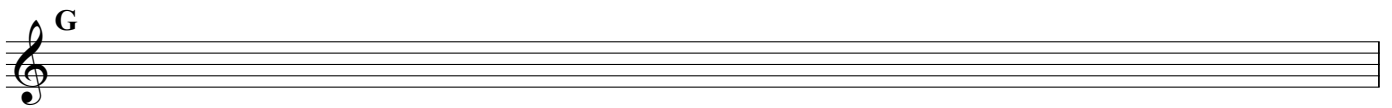
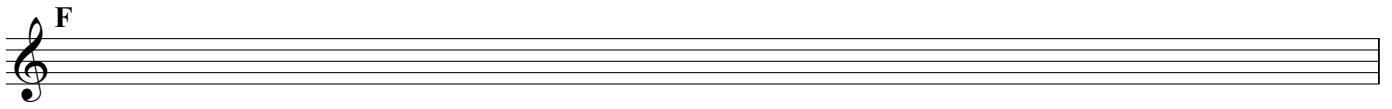
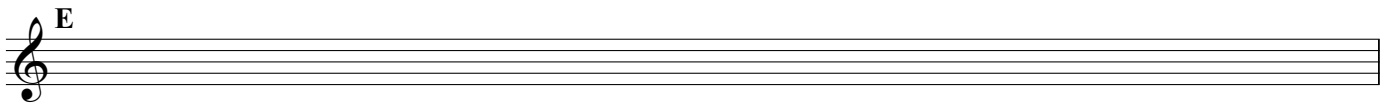
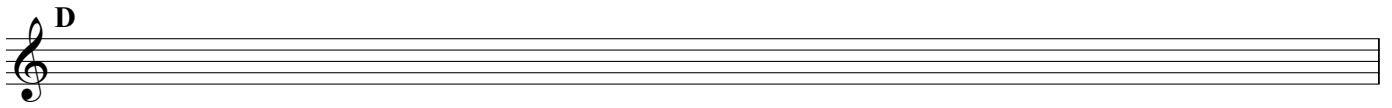
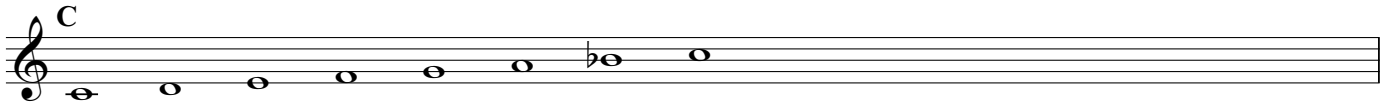
Ionian Modes (Parallel)

Same as the major scale.



Mixolydian Modes (Parallel)

Lower the 7th note of the major scale.



Dorian Modes (Parallel)

Lower the 3rd and 7th notes of the major scale,
or raise the 6th note of the natural minor scale.

c

A musical staff in treble clef showing the notes of the C Dorian mode: C, D, E♭, F, G, A, B♭, C.

c# | **db**

A musical staff in treble clef showing the notes of the C# Dorian mode: C#, D#, E, F, G, A, B♭, C#.

d

A musical staff in treble clef showing the notes of the D Dorian mode: D, E, F, G, A, B, C#, D.

d# | **eb**

A musical staff in treble clef showing the notes of the D# Dorian mode: D#, E#, F, G, A, B, C#, D#.

e

A musical staff in treble clef showing the notes of the E Dorian mode: E, F, G, A, B, C, D#, E.

f

A musical staff in treble clef showing the notes of the F Dorian mode: F, G, A, B, C, D, E♭, F.

f# | **gb**

A musical staff in treble clef showing the notes of the F# Dorian mode: F#, G#, A, B, C, D, E, F#.

g

A musical staff in treble clef showing the notes of the G Dorian mode: G, A, B, C, D, E, F, G.

g# | **ab**

A musical staff in treble clef showing the notes of the G# Dorian mode: G#, A#, B, C, D, E, F, G#.

a

A musical staff in treble clef showing the notes of the A Dorian mode: A, B, C, D, E, F, G#, A.

a# | **bb**

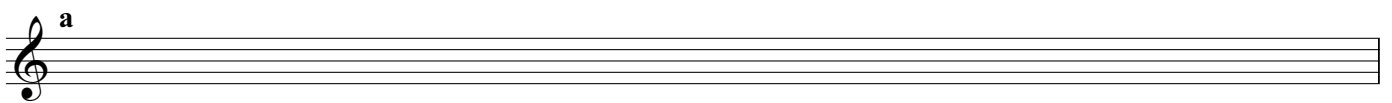
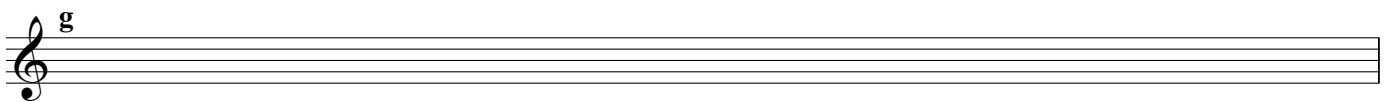
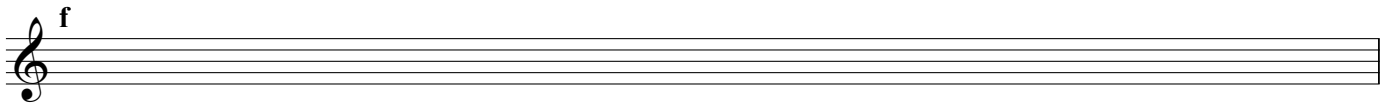
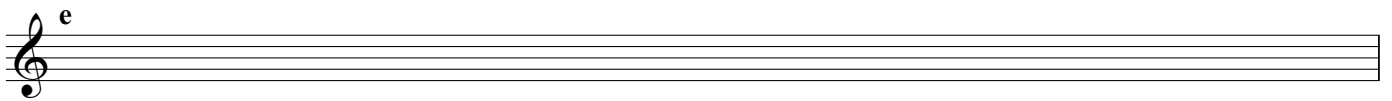
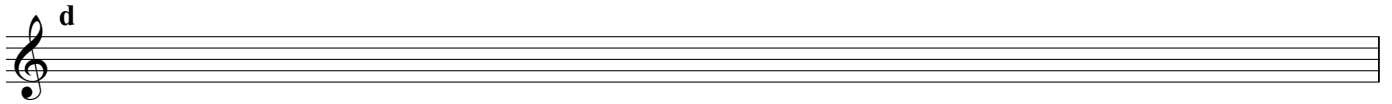
A musical staff in treble clef showing the notes of the A# Dorian mode: A#, B#, C, D, E, F, G, A#.

b | **cb**

A musical staff in treble clef showing the notes of the B Dorian mode: B, C, D, E, F, G, A, B.

Aeolian Modes (Parallel)

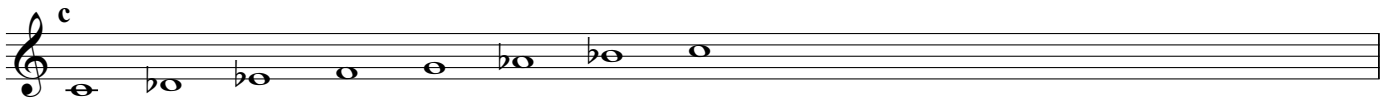
Lower the 3rd, 6th, and 7th notes of the major scale,
or same as the natural minor scale.



Phrygian Modes (Parallel)

Lower the 2nd, 3rd, 6th, and 7th notes of the major scale,
or lower the 2nd note of the natural minor scale.

c



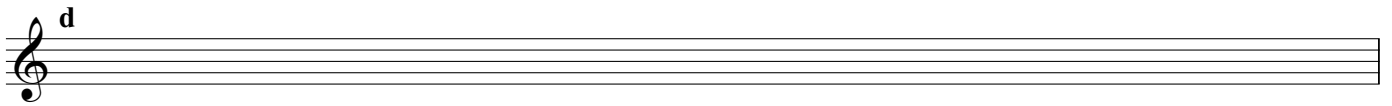
A musical staff in treble clef showing the Phrygian mode starting on C. The notes are C, Bb, Bb, C, C, Bb, Bb, C, with flats under the second, third, sixth, and seventh notes.

c# **db**



A musical staff in treble clef showing the Phrygian mode starting on C#. The first note is C# and the second note is Db.

d



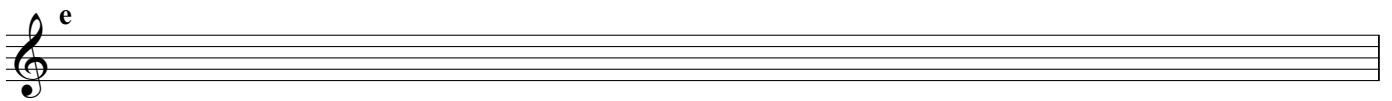
An empty musical staff in treble clef for the Phrygian mode starting on D.

d# **eb**



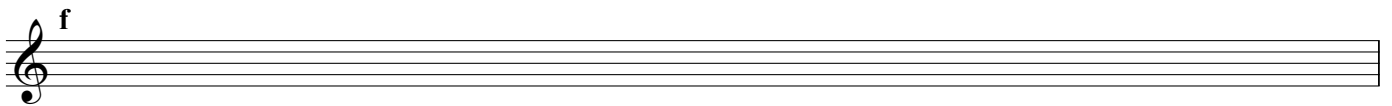
A musical staff in treble clef showing the Phrygian mode starting on D#. The first note is D# and the second note is Eb.

e



An empty musical staff in treble clef for the Phrygian mode starting on E.

f



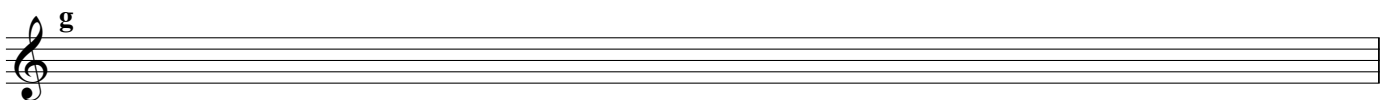
An empty musical staff in treble clef for the Phrygian mode starting on F.

f# **gb**



A musical staff in treble clef showing the Phrygian mode starting on F#. The first note is F# and the second note is Gb.

g



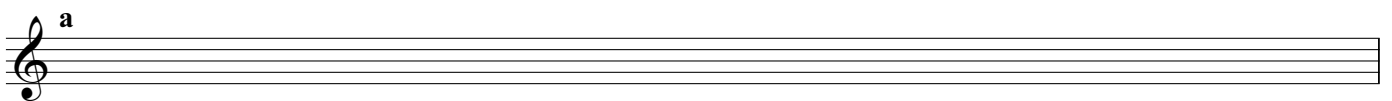
An empty musical staff in treble clef for the Phrygian mode starting on G.

g# **ab**



A musical staff in treble clef showing the Phrygian mode starting on G#. The first note is G# and the second note is Ab.

a



An empty musical staff in treble clef for the Phrygian mode starting on A.

a# **bb**



A musical staff in treble clef showing the Phrygian mode starting on A#. The first note is A# and the second note is Bb.

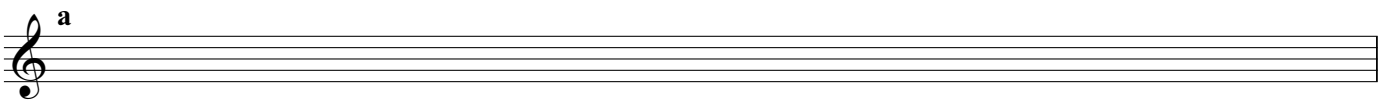
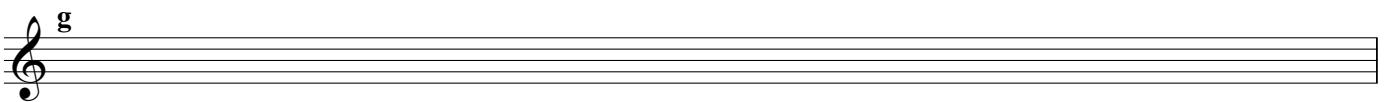
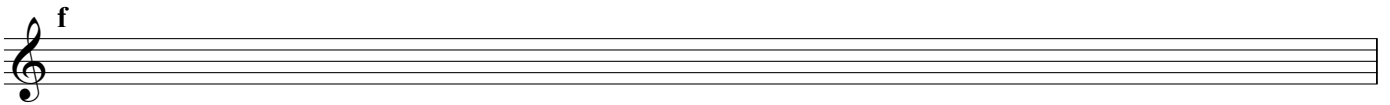
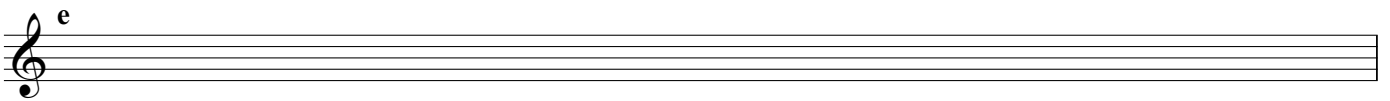
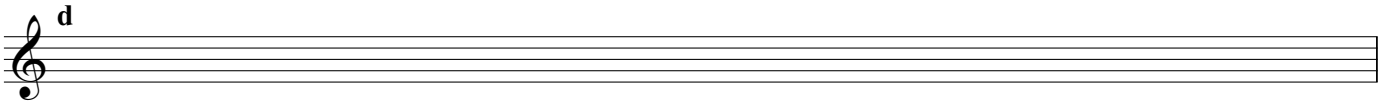
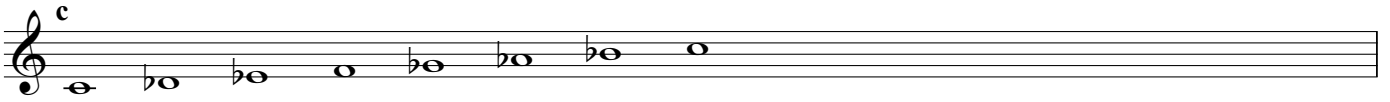
b **cb**



A musical staff in treble clef showing the Phrygian mode starting on B. The first note is B and the second note is Cb.

Locrian Modes (Parallel)

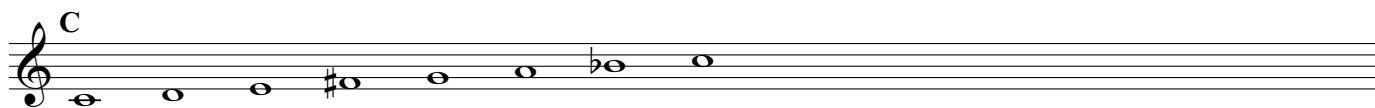
Lower the 2nd, 3rd, 5th, 6th, and 7th notes of the major scale,
or lower the 2nd and 5th notes of the natural minor scale.



Overtone Scales

Raise the 4th note and lower the 7th note of the major scale.

C



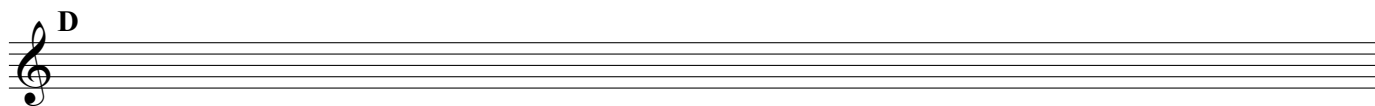
A musical staff in treble clef showing the C major scale with alterations. The notes are: C (middle C), D, E, F# (sharped), G, A, Bb (flat), and C (octave). The 4th note (F) is raised to F# and the 7th note (B) is lowered to Bb.

C#



A musical staff in treble clef showing the C# major scale. The notes are: C# (first line), D#, E, F#, G, A, B, and C# (second line). The 4th note (F) is raised to F# and the 7th note (B) is lowered to B.

D



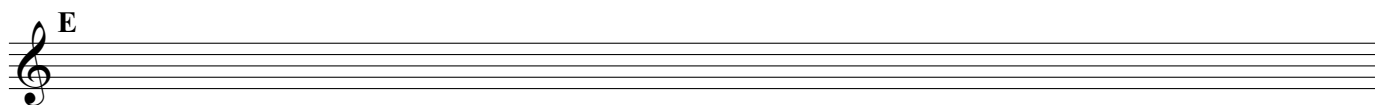
A musical staff in treble clef showing the D major scale. The notes are: D (first space), E, F#, G, A, B, and D (second space). The 4th note (F) is raised to F# and the 7th note (B) is lowered to B.

D#



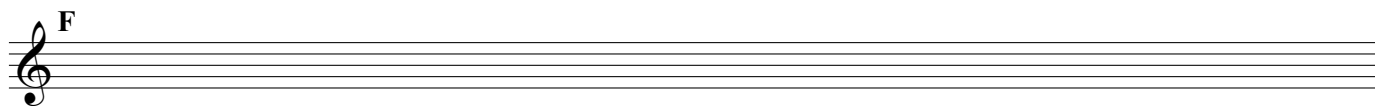
A musical staff in treble clef showing the D# major scale. The notes are: D# (first space), E#, F#, G, A, B, and D# (second space). The 4th note (F) is raised to F# and the 7th note (B) is lowered to B.

E



A musical staff in treble clef showing the E major scale. The notes are: E (first space), F#, G, A, B, C#, and E (second space). The 4th note (F) is raised to F# and the 7th note (B) is lowered to B.

F



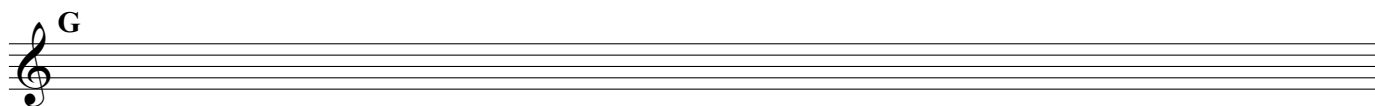
A musical staff in treble clef showing the F major scale. The notes are: F (first space), G, A, B, C, D, and F (second space). The 4th note (F) is raised to F and the 7th note (B) is lowered to B.

F#



A musical staff in treble clef showing the F# major scale. The notes are: F# (first space), G#, A, B, C, D, and F# (second space). The 4th note (F) is raised to F# and the 7th note (B) is lowered to B.

G



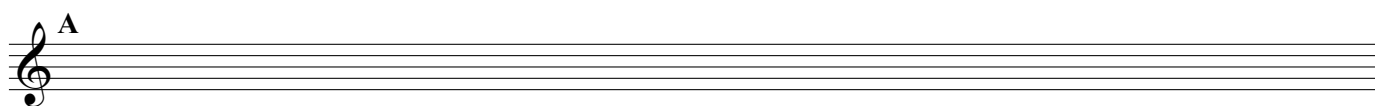
A musical staff in treble clef showing the G major scale. The notes are: G (first space), A, B, C, D, E, and G (second space). The 4th note (F) is raised to F and the 7th note (B) is lowered to B.

G#



A musical staff in treble clef showing the G# major scale. The notes are: G# (first space), A#, B, C, D, E, and G# (second space). The 4th note (F) is raised to F# and the 7th note (B) is lowered to B.

A



A musical staff in treble clef showing the A major scale. The notes are: A (first space), B, C, D, E, F#, and A (second space). The 4th note (F) is raised to F# and the 7th note (B) is lowered to B.

A#



A musical staff in treble clef showing the A# major scale. The notes are: A# (first space), B#, C, D, E, F#, and A# (second space). The 4th note (F) is raised to F# and the 7th note (B) is lowered to B.

B



A musical staff in treble clef showing the B major scale. The notes are: B (first space), C, D, E, F#, G#, and B (second space). The 4th note (F) is raised to F# and the 7th note (B) is lowered to B.