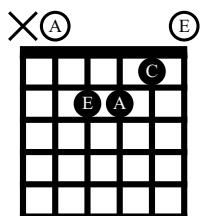


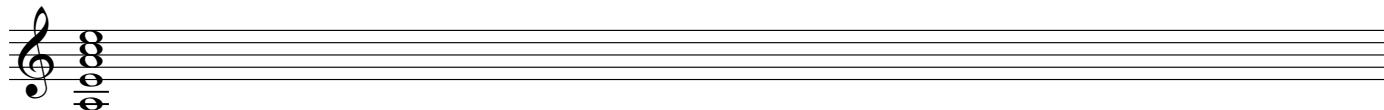
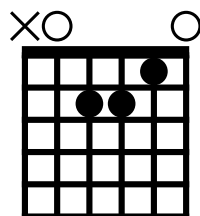
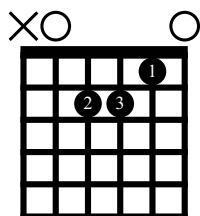
UNIT 1: Major and Minor Chords

Lesson 1

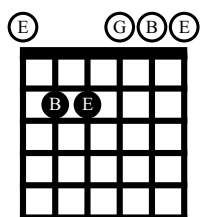
Am



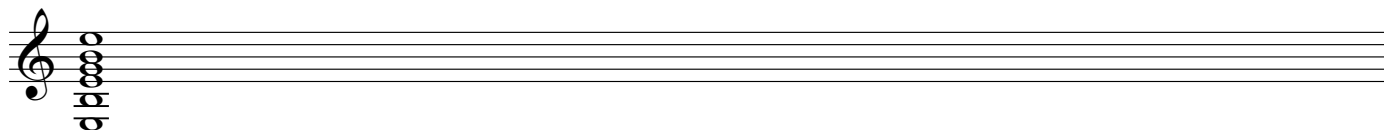
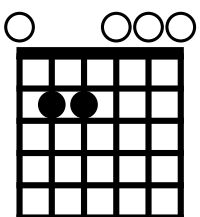
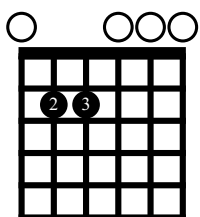
A minor = A C E



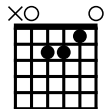
Em



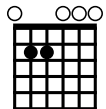
E minor = E G B



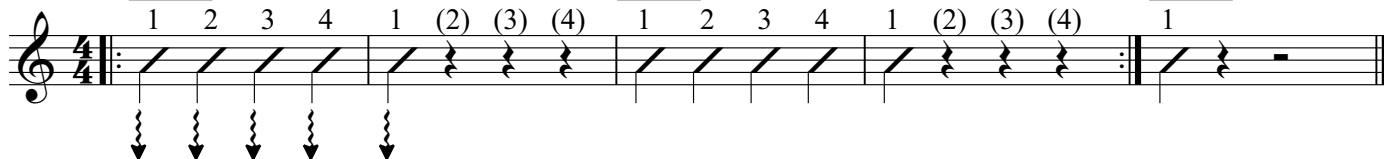
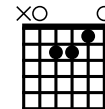
Am



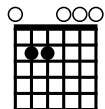
Em



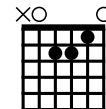
Am



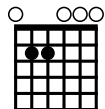
Em



Am

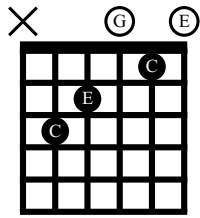


Em

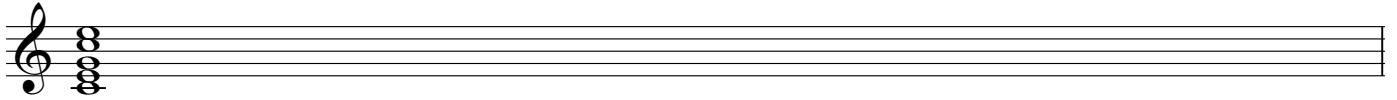
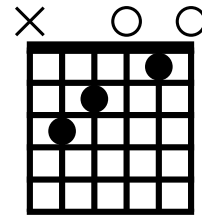
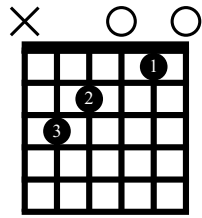


Lesson 2

CM



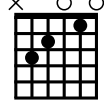
C Major = C E G



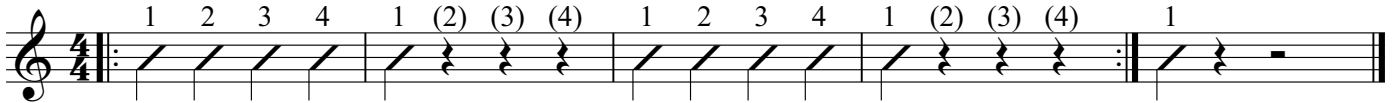
Am



CM



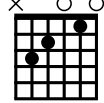
Am



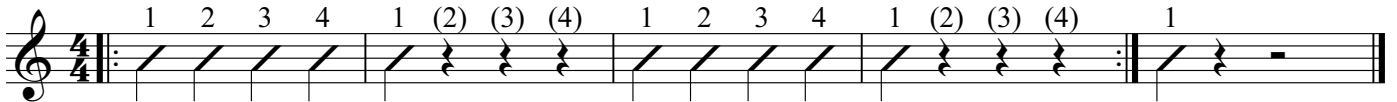
Em



CM



Em



Am



Em



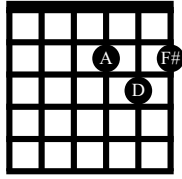
Am



Lesson 3

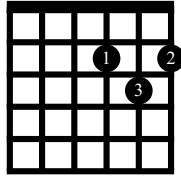
DM

XXO[Ⓧ]

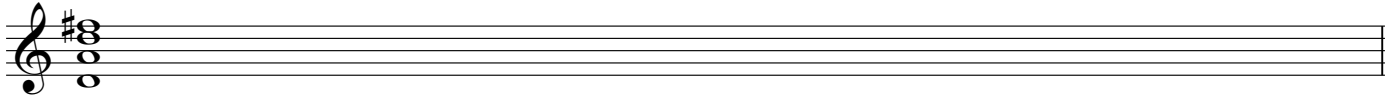
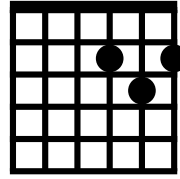


D Major = D F# A

XXO



XXO



Am



1 2 3 4 1 (2) (3) (4)

DM

XXO

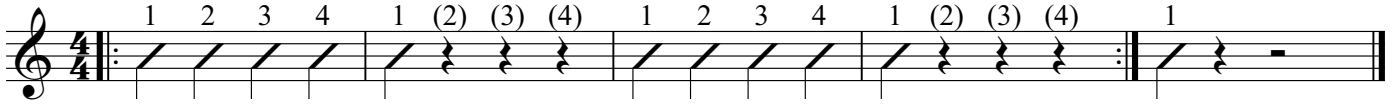


1 2 3 4 1 (2) (3) (4)

Am



1



Em



1 2 3 4 1 (2) (3) (4)

DM

XXO

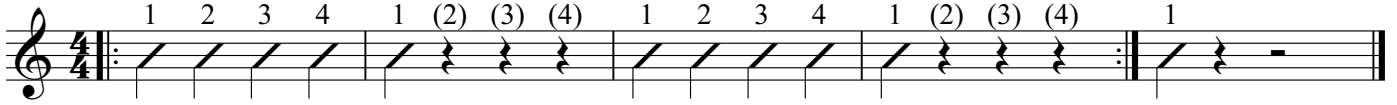


1 2 3 4 1 (2) (3) (4)

Em



1



CM



1 2 3 4 1 (2) (3) (4)

DM

XXO

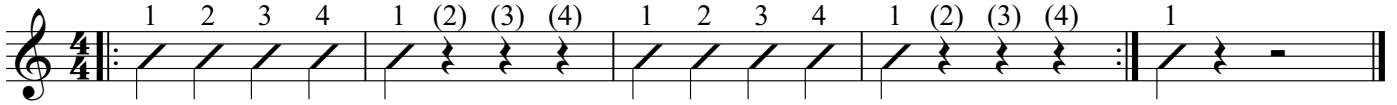


1 2 3 4 1 (2) (3) (4)

CM



1



Am

1 2 3 4 1 2 (3) (4)

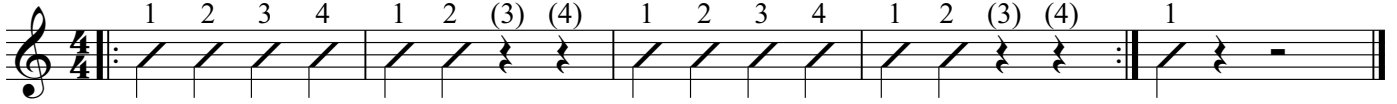
CM



1 2 3 4 1 2 (3) (4)

Am

1



Em

1 2 3 4 1 2 (3) (4)

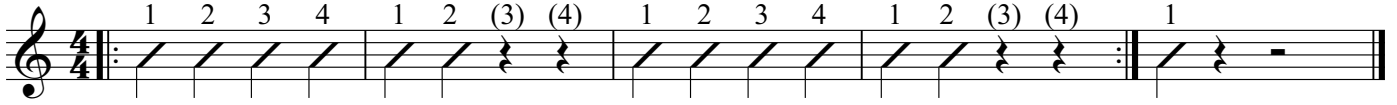
CM



1 2 3 4 1 2 (3) (4)

Em

1



Am

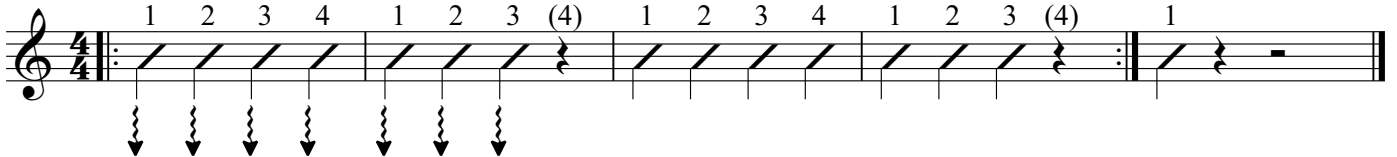
1 2 3 4 1 2 3 (4)

Em

1 2 3 4 1 2 3 (4)

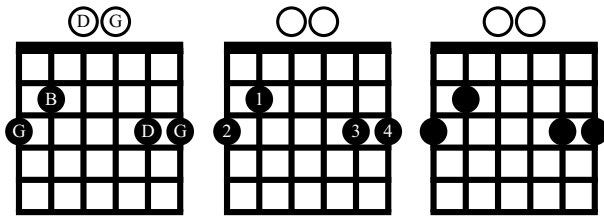
Am

1

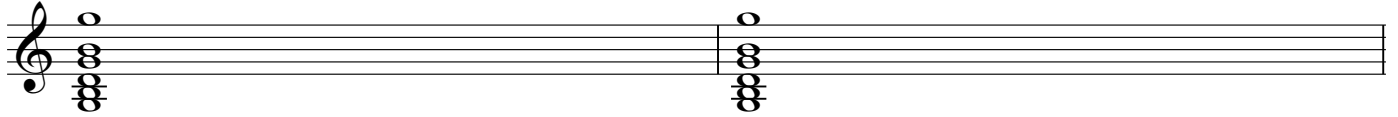
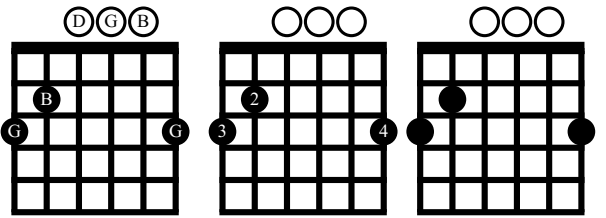
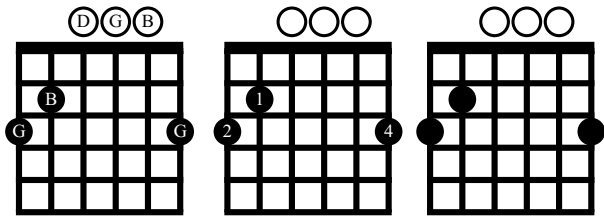
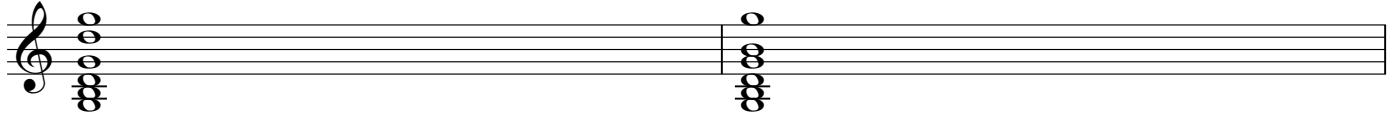
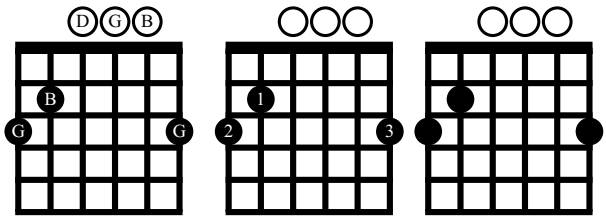


Lesson 4

GM



G Major = G B D

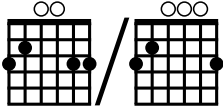


Am



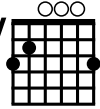
1 2 3 4 1 (2) (3) (4)

GM



1 2 3 4

GM



1 2 3 4

Am



1

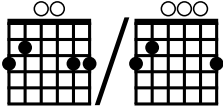


Em



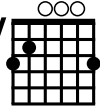
1 2 3 4 1 (2) (3) (4)

GM



1 2 3 4

GM



1 2 3 4

Em



1

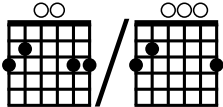


CM



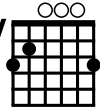
1 2 3 4 1 (2) (3) (4)

GM



1 2 3 4

GM

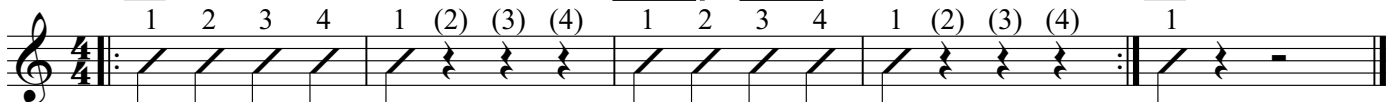


1 2 3 4

CM



1

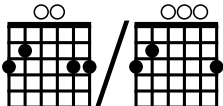


DM



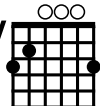
1 2 3 4 1 (2) (3) (4)

GM



1 2 3 4

GM



1 2 3 4

DM



1



Am DM Am

1 2 3 4 1 2 (3) (4) 1 2 3 4 1 2 (3) (4) 1

This staff shows a sequence of chords: Am, DM, and Am. The Am chord is played with fingerings 1, 2, 3, 4. The DM chord is shown with a guitar chord diagram (x00232) and fingerings 1, 2, 3, 4. The sequence is repeated three times, ending with a double bar line and a repeat sign.

Em DM Em

1 2 3 4 1 2 (3) (4) 1 2 3 4 1 2 (3) (4) 1

This staff shows a sequence of chords: Em, DM, and Em. The Em chord is played with fingerings 1, 2, 3, 4. The DM chord is shown with a guitar chord diagram (x00232) and fingerings 1, 2, 3, 4. The sequence is repeated three times, ending with a double bar line and a repeat sign.

CM DM CM

1 2 3 4 1 2 (3) (4) 1 2 3 4 1 2 (3) (4) 1

This staff shows a sequence of chords: CM, DM, and CM. The CM chord is played with fingerings 1, 2, 3, 4. The DM chord is shown with a guitar chord diagram (x00232) and fingerings 1, 2, 3, 4. The sequence is repeated three times, ending with a double bar line and a repeat sign.

Am CM Am

1 2 3 4 1 2 3 (4) 1 2 3 4 1 2 3 (4) 1

This staff shows a sequence of chords: Am, CM, and Am. The Am chord is played with fingerings 1, 2, 3, 4. The CM chord is played with fingerings 1, 2, 3, (4). The sequence is repeated three times, ending with a double bar line and a repeat sign.

Em CM Em

1 2 3 4 1 2 3 (4) 1 2 3 4 1 2 3 (4) 1

This staff shows a sequence of chords: Em, CM, and Em. The Em chord is played with fingerings 1, 2, 3, 4. The CM chord is played with fingerings 1, 2, 3, (4). The sequence is repeated three times, ending with a double bar line and a repeat sign.

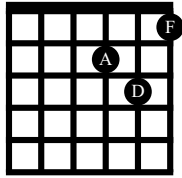
Am Em Am

1 2 3 4 1 2 3 4 1 2 3 4 1 2 3 4 1

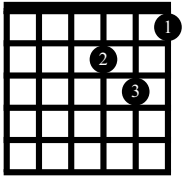
This staff shows a sequence of chords: Am, Em, and Am. The Am chord is played with fingerings 1, 2, 3, 4. The Em chord is played with fingerings 1, 2, 3, 4. The sequence is repeated three times, ending with a double bar line and a repeat sign. Downward-pointing arrows are placed below the notes of the first Am chord.

Lesson 5

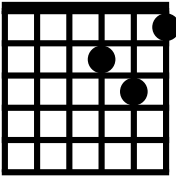
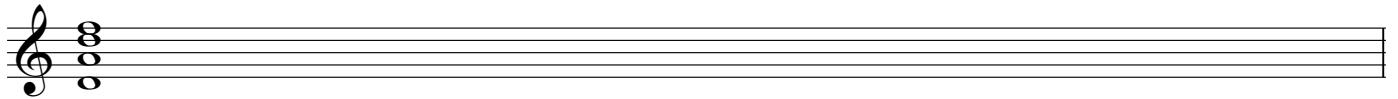
Dm
XX^oⓉ



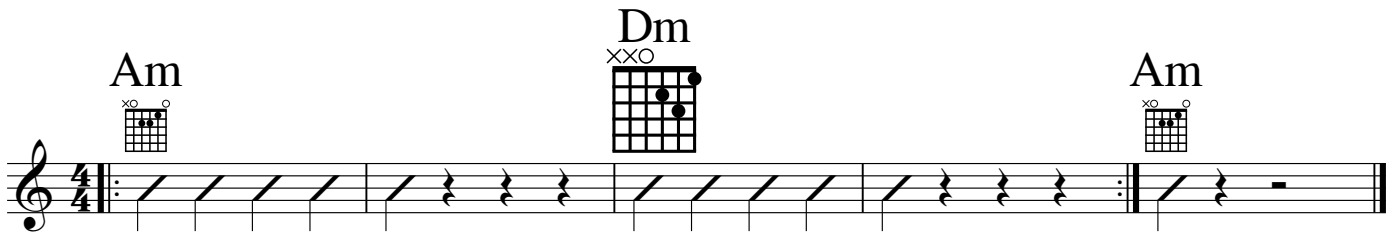
D minor = D F A
XXO



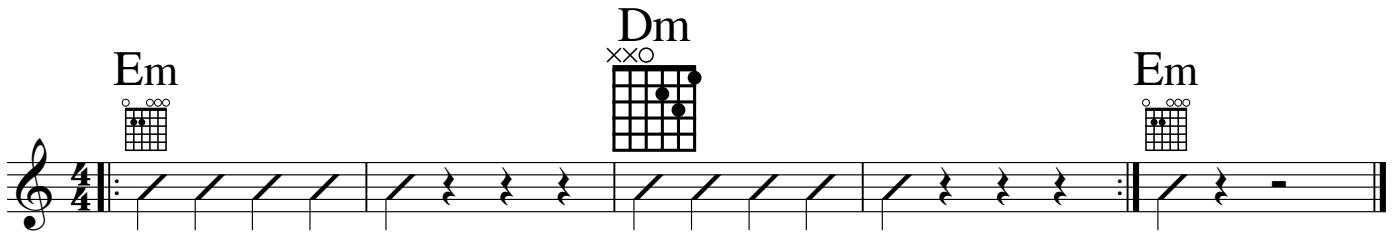
XXO

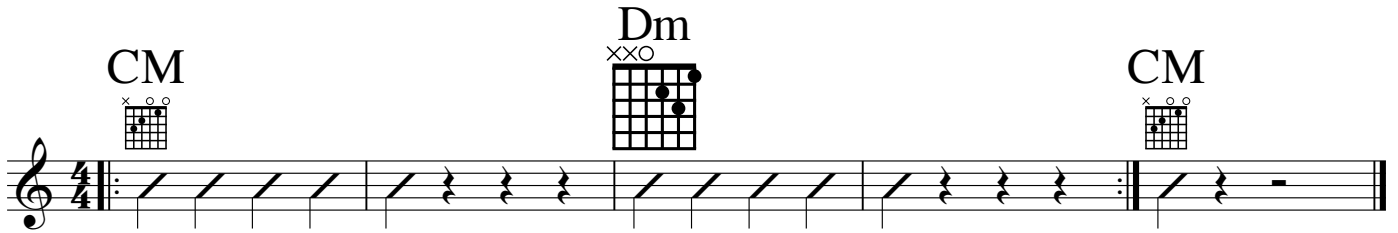
Am Dm Am



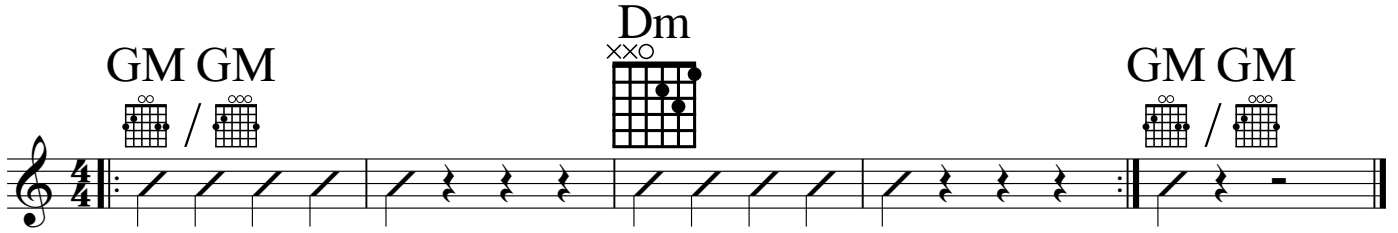
Em Dm Em



CM Dm CM



GM GM Dm GM GM



Am GM GM Am

Am GM GM Am

Em GM GM Em

Em GM GM Em

CM GM GM CM

CM GM GM CM

DM GM GM DM

DM GM GM DM

Am DM Am

Am DM Am

Em DM Em

Em DM Em

CM DM CM

CM DM CM

Am CM Am

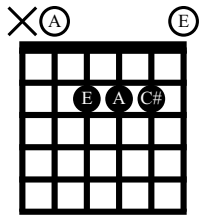
Am CM Am

Em CM Em

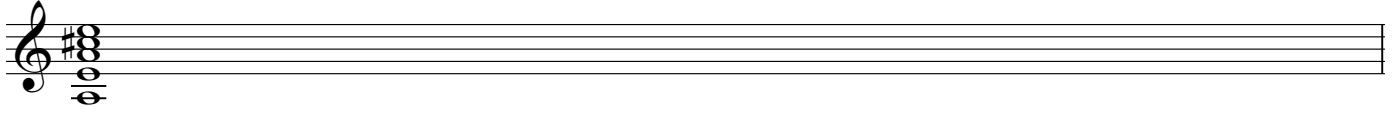
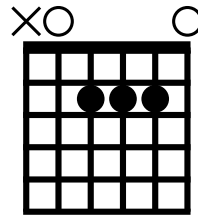
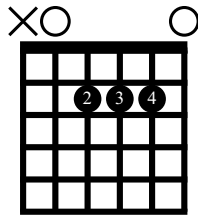
Em CM Em

Lesson 6

AM



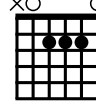
A Major = A C# E



Em



AM



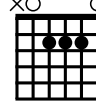
Em



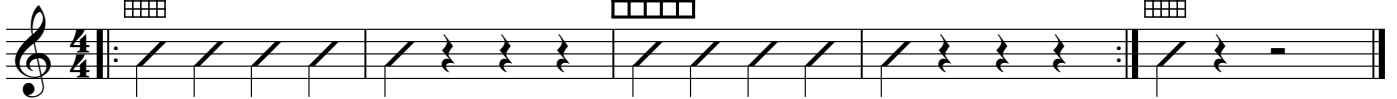
DM



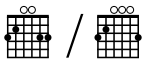
AM



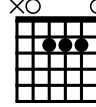
DM



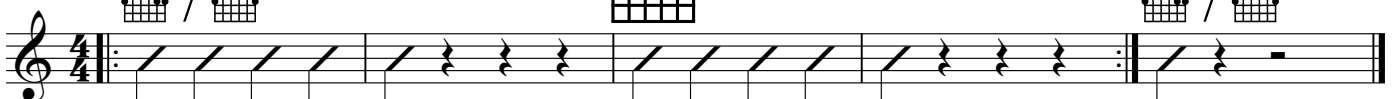
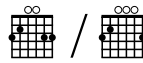
GM GM



AM



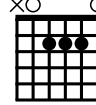
GM GM



Dm



AM



Dm



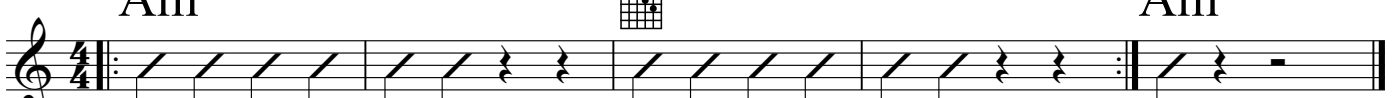
Am



Dm



Am



Em



Dm



Em



CM Dm CM

GM Dm GM

Am GM Am

Em GM Em

CM GM CM

DM GM DM

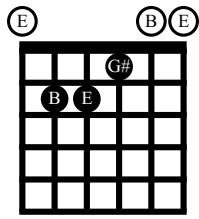
Am DM Am

Em DM Em

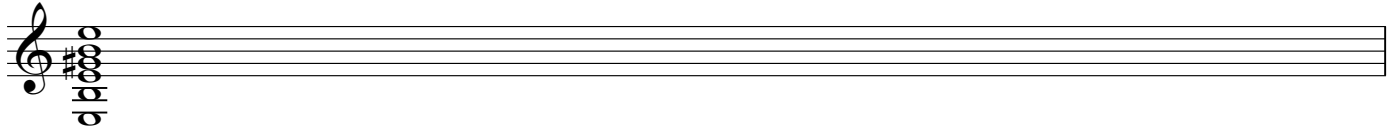
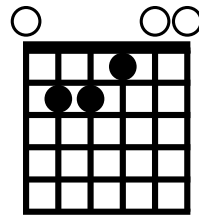
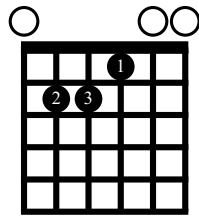
CM DM CM

Lesson 7

EM



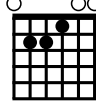
E Major = E G# B



Am



EM



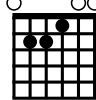
Am



DM



EM



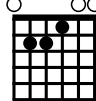
DM



Dm



EM



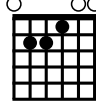
Dm



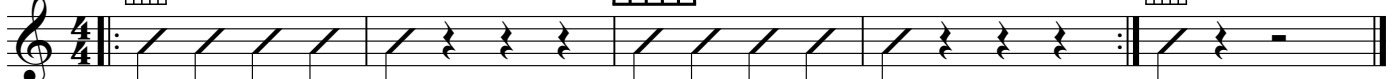
AM



EM



AM



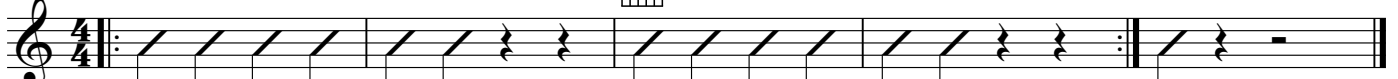
Em



AM



Em



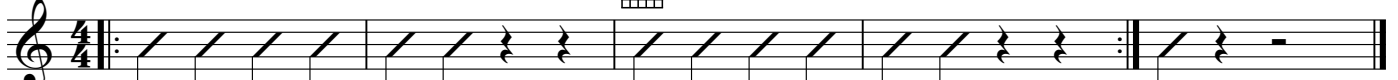
DM



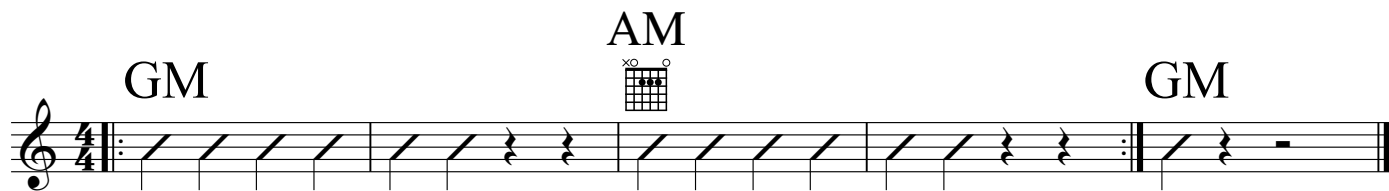
AM



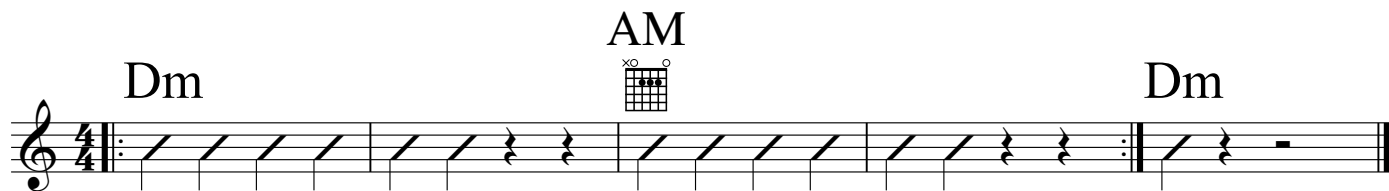
DM



GM AM GM



Dm AM Dm



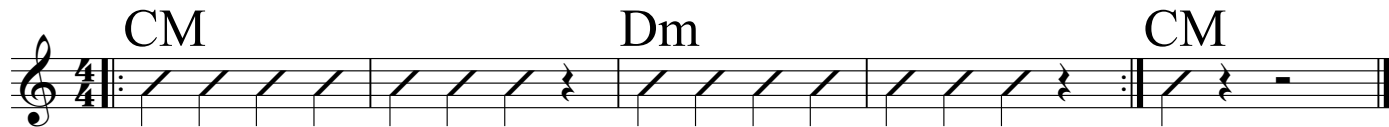
Am Dm Am



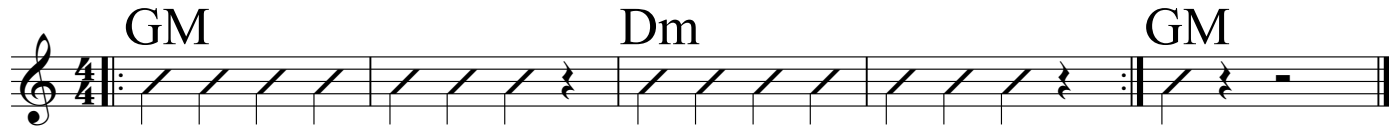
Em Dm Em



CM Dm CM



GM Dm GM



Am GM Am



Em GM Em



CM GM CM



DM GM DM

