

Em Esus⁴ Em

A musical staff in 4/4 time with a treble clef. It contains three measures of rhythmic notation (diagonal slashes) with chord labels Em, Esus⁴, and Em. The Esus⁴ chord is accompanied by a guitar fretboard diagram showing the 4th fret on the 2nd, 3rd, and 4th strings, and the 1st fret on the 1st string.

EM Esus⁴ EM

A musical staff in 4/4 time with a treble clef. It contains three measures of rhythmic notation (diagonal slashes) with chord labels EM, Esus⁴, and EM. The Esus⁴ chord is accompanied by a guitar fretboard diagram showing the 4th fret on the 2nd, 3rd, and 4th strings, and the 1st fret on the 1st string.

CM Csus2 CM

A musical staff in 4/4 time with a treble clef. It contains three measures of rhythmic notation (diagonal slashes) with chord labels CM, Csus2, and CM.

CM Csus4 CM

A musical staff in 4/4 time with a treble clef. It contains three measures of rhythmic notation (diagonal slashes) with chord labels CM, Csus4, and CM.

CM Csus2 CM Csus4 CM

A musical staff in 4/4 time with a treble clef. It contains five measures of rhythmic notation (diagonal slashes) with chord labels CM, Csus2, CM, Csus4, and CM.

Dm Dsus2 Dm

A musical staff in 4/4 time with a treble clef. It contains three measures of rhythmic notation (diagonal slashes) with chord labels Dm, Dsus2, and Dm.

Dm Dsus4 Dm

A musical staff in 4/4 time with a treble clef. It contains three measures of rhythmic notation (diagonal slashes) with chord labels Dm, Dsus4, and Dm.

Dm Dsus2 Dm Dsus4 Dm

A musical staff in 4/4 time with a treble clef. It contains five measures of rhythmic notation (diagonal slashes) with chord labels Dm, Dsus2, Dm, Dsus4, and Dm.

Lesson 25

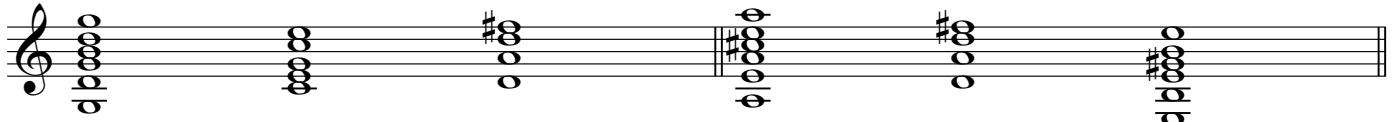
I IV V

G Major scale: G A B C D E F# G

A Major scale: A B C# D E F# G# A

GM CM DM

AM DM EM



I IV V

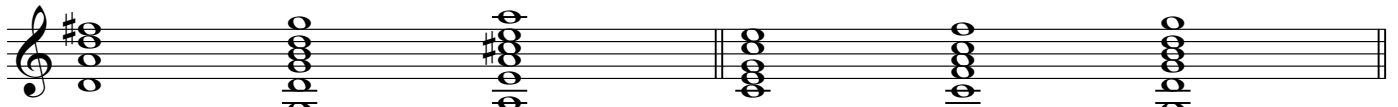
I IV V

D Major scale: D E F# G A B C# D

C Major scale: C D E F G A B C

DM GM AM

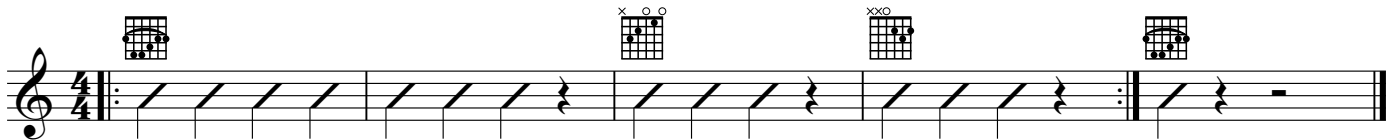
CM FM GM



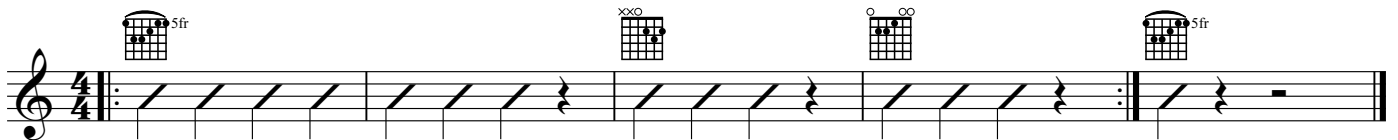
I IV V

I IV V

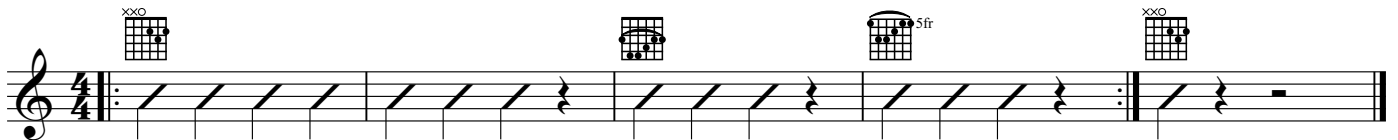
GM CM DM GM



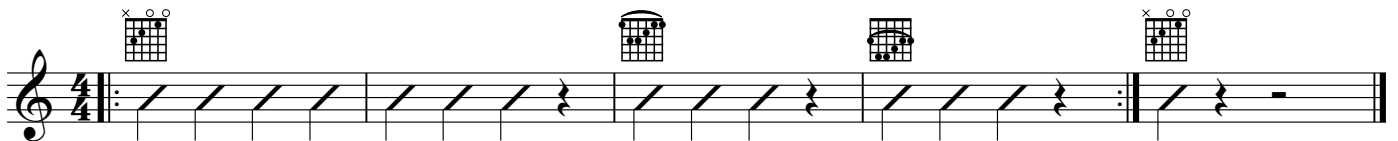
AM DM EM AM



DM GM AM DM



CM FM GM CM



EM FM EM

A musical staff in 4/4 time with a treble clef. It contains three measures of rhythmic notation: a quarter note, an eighth note, a quarter note, and an eighth note. Above the staff, the chords EM, FM, and EM are indicated. A guitar chord diagram for FM is shown above the second measure.

EM GM EM

A musical staff in 4/4 time with a treble clef. It contains three measures of rhythmic notation: a quarter note, an eighth note, a quarter note, and an eighth note. Above the staff, the chords EM, GM, and EM are indicated. A guitar chord diagram for GM is shown above the second measure.

EM AM EM

A musical staff in 4/4 time with a treble clef. It contains three measures of rhythmic notation: a quarter note, an eighth note, a quarter note, and an eighth note. Above the staff, the chords EM, AM, and EM are indicated. A guitar chord diagram for AM with a sharp sign is shown above the second measure.

Em Esus4 Em

A musical staff in 4/4 time with a treble clef. It contains three measures of rhythmic notation: a quarter note, an eighth note, a quarter note, and an eighth note. Above the staff, the chords Em, Esus4, and Em are indicated. A guitar chord diagram for Esus4 is shown above the second measure.

EM Esus4 EM

A musical staff in 4/4 time with a treble clef. It contains three measures of rhythmic notation: a quarter note, an eighth note, a quarter note, and an eighth note. Above the staff, the chords EM, Esus4, and EM are indicated. A guitar chord diagram for Esus4 is shown above the second measure.

CM Csus2 CM

A musical staff in 4/4 time with a treble clef. It contains three measures of rhythmic notation: a quarter note, an eighth note, a quarter note, and an eighth note. Above the staff, the chords CM, Csus2, and CM are indicated. A guitar chord diagram for Csus2 is shown above the second measure.

CM Csus4 CM

A musical staff in 4/4 time with a treble clef. It contains three measures of rhythmic notation: a quarter note, an eighth note, a quarter note, and an eighth note. Above the staff, the chords CM, Csus4, and CM are indicated. A guitar chord diagram for Csus4 is shown above the second measure.

CM Csus2 CM Csus4 CM

A musical staff in 4/4 time with a treble clef. It contains five measures of rhythmic notation: a quarter note, an eighth note, a quarter note, an eighth note, a quarter note, and an eighth note. Above the staff, the chords CM, Csus2, CM, Csus4, and CM are indicated. A guitar chord diagram for Csus4 is shown above the fourth measure.

Lesson 26

I IV ii V

G Major scale: G A B C D E F# G

D Major scale: D E F# G A B C# D

C Major scale: C D E F G A B C

GM CM Am DM

DM GM Em AM

CM FM Dm GM

A musical staff in treble clef showing chord voicings for I, IV, ii, and V chords in G, D, and C major scales. The chords are represented by circles with stems and flags on a five-line staff. The first four chords (I, IV, ii, V) are in G major. The next four (I, IV, ii, V) are in D major. The final four (I, IV, ii, V) are in C major.

I IV ii V I IV ii V I IV ii V

GM

CM

Am

DM

GM

A musical staff in 4/4 time with a treble clef. Above the staff are five guitar chord diagrams for GM, CM, Am, DM, and GM. The staff contains rhythmic notation consisting of quarter notes with stems and flags, and rests, corresponding to the chords above.

DM

GM

Em

AM

DM

A musical staff in 4/4 time with a treble clef. Above the staff are five guitar chord diagrams for DM, GM, Em, AM, and DM. The AM diagram includes a 'sfr' (sweep) symbol. The staff contains rhythmic notation consisting of quarter notes with stems and flags, and rests, corresponding to the chords above.

CM

FM

Dm

GM

CM

A musical staff in 4/4 time with a treble clef. Above the staff are five guitar chord diagrams for CM, FM, Dm, GM, and CM. The staff contains rhythmic notation consisting of quarter notes with stems and flags, and rests, corresponding to the chords above.

GM CM DM GM

A musical staff in 4/4 time with a treble clef. It contains four measures of rhythmic notation: a quarter note, a quarter note, a quarter note, and a quarter note. Above the staff are guitar chord diagrams for GM, CM, DM, and GM. The GM diagrams show the G major chord (x023213) on the first and fourth strings. The CM diagram shows the C major chord (x32010) on the first three strings. The DM diagram shows the D major chord (xx0232) on the second and third strings. The staff ends with a repeat sign and a final measure with a whole rest.

AM DM EM AM

A musical staff in 4/4 time with a treble clef. It contains four measures of rhythmic notation. Above the staff are guitar chord diagrams for AM, DM, EM, and AM. The AM diagrams show the A major chord (x022202) on the first and second strings, with a '5fr' label. The DM diagram shows the D major chord (xx0232) on the second and third strings. The EM diagram shows the E major chord (x21220) on the second and third strings, with a '5fr' label. The staff ends with a repeat sign and a final measure with a whole rest.

DM GM AM DM

A musical staff in 4/4 time with a treble clef. It contains four measures of rhythmic notation. Above the staff are guitar chord diagrams for DM, GM, AM, and DM. The DM diagram shows the D major chord (xx0232) on the second and third strings. The GM diagram shows the G major chord (x023213) on the first and fourth strings. The AM diagram shows the A major chord (x022202) on the first and second strings, with a '5fr' label. The staff ends with a repeat sign and a final measure with a whole rest.

CM FM GM CM

A musical staff in 4/4 time with a treble clef. It contains four measures of rhythmic notation. Above the staff are guitar chord diagrams for CM, FM, GM, and CM. The CM diagram shows the C major chord (x32010) on the first three strings. The FM diagram shows the F major chord (xx3211) on the second and third strings. The GM diagram shows the G major chord (x023213) on the first and fourth strings. The staff ends with a repeat sign and a final measure with a whole rest.

EM FM EM

A musical staff in 4/4 time with a treble clef. It contains four measures of rhythmic notation. Above the staff are guitar chord diagrams for EM, FM, and EM. The EM diagram shows the E major chord (x21220) on the second and third strings. The FM diagram shows the F major chord (xx3211) on the second and third strings. The staff ends with a repeat sign and a final measure with a whole rest.

EM GM EM

A musical staff in 4/4 time with a treble clef. It contains four measures of rhythmic notation. Above the staff are guitar chord diagrams for EM, GM, and EM. The EM diagram shows the E major chord (x21220) on the second and third strings. The GM diagram shows the G major chord (x023213) on the first and fourth strings. The staff ends with a repeat sign and a final measure with a whole rest.

EM AM EM

A musical staff in 4/4 time with a treble clef. It contains four measures of rhythmic notation. Above the staff are guitar chord diagrams for EM, AM, and EM. The EM diagram shows the E major chord (x21220) on the second and third strings. The AM diagram shows the A major chord (x022202) on the first and second strings. The staff ends with a repeat sign and a final measure with a whole rest.

Em Esus4 Em

A musical staff in 4/4 time with a treble clef. It contains four measures of rhythmic notation. Above the staff are guitar chord diagrams for Em, Esus4, and Em. The Em diagram shows the E minor chord (x21220) on the second and third strings. The Esus4 diagram shows the E suspended 4th chord (x21220) on the second and third strings. The staff ends with a repeat sign and a final measure with a whole rest.

EM Esus4 EM

A musical staff in 4/4 time with a treble clef. It contains four measures of rhythmic notation. Above the staff are guitar chord diagrams for EM, Esus4, and EM. The EM diagram shows the E major chord (x21220) on the second and third strings. The Esus4 diagram shows the E suspended 4th chord (x21220) on the second and third strings. The staff ends with a repeat sign and a final measure with a whole rest.

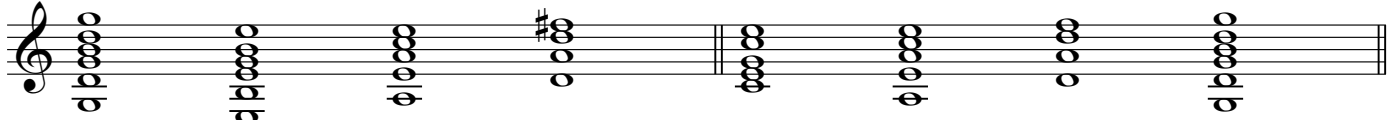
Lesson 27

I vi ii V and I vi IV V

G Major scale: G A B C D E F# G

C Major scale: C D E F G A B C

GM Em Am DM CM Am Dm GM

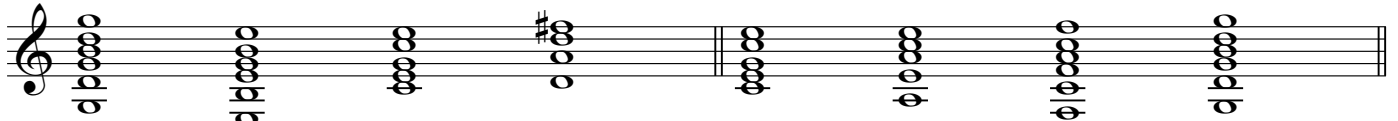


I vi ii V I vi ii V

G Major scale: G A B C D E F# G

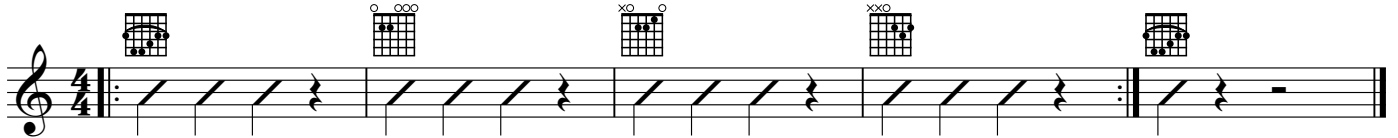
C Major scale: C D E F G A B C

GM Em CM DM CM Am FM GM

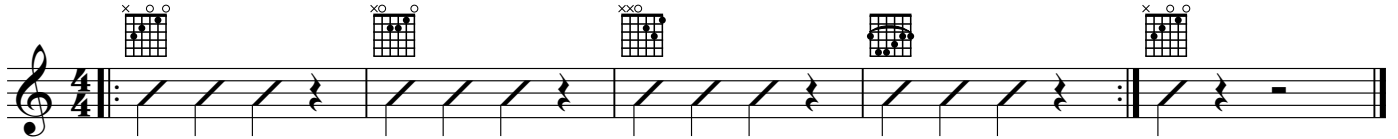


I vi IV V I vi IV V

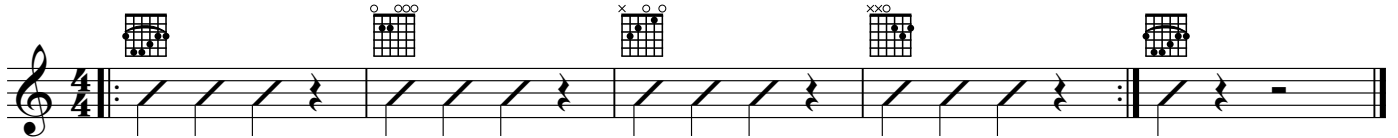
GM Em Am DM GM



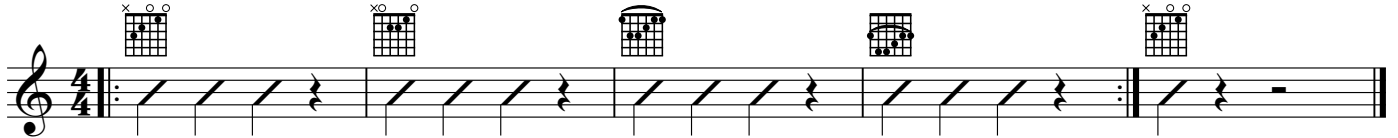
CM Am Dm GM CM



GM Em CM DM GM






CM Am FM GM CM






GM  CM Am DM GM 



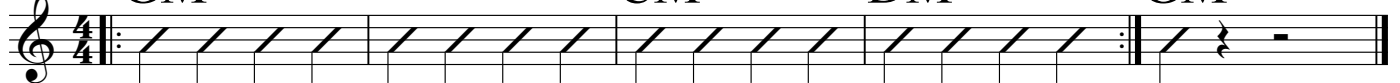
DM GM  Em AM  DM




CM FM  Dm GM  CM



GM CM DM GM




AM DM EM AM



DM GM AM DM



CM FM GM CM



EM FM EM



EM GM EM



EM AM EM



Lesson 28

i IV V, i VI iv V, i III VI V, i III IV V

D melodic minor scale: D E F G A B \sharp C \sharp D

A harmonic minor scale: A B C D E F G \sharp A

Dm GM AM Am FM Dm EM

i IV V i IV VI iv V

A minor scale: A B C D E F G/G \sharp A

D minor scale: D E F G A B \flat /B \sharp C/C \sharp D

Am CM FM EM Dm FM GM AM

i III VI V i III IV V

Dm GM AM Dm

Am FM Dm EM Am

Am CM FM EM Am

Dm FM GM AM Dm

GM Em Am DM GM

CM Am Dm GM CM

GM Em CM DM GM

CM Am FM GM CM

GM CM Am DM GM

DM GM Em AM DM

CM FM Dm GM CM

GM CM DM GM

AM DM EM AM

DM GM AM DM

CM FM GM CM

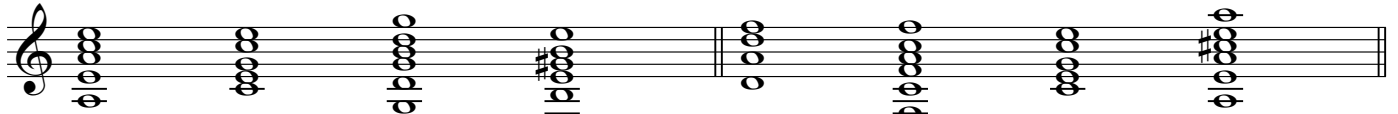
Lesson 29

i III VII V, i VII VI V, i V VI VII

A minor scale: A B C D E F G/G#A

D minor scale: D E F G A B \flat C/C#D

Am CM GM EM Dm FM CM AM

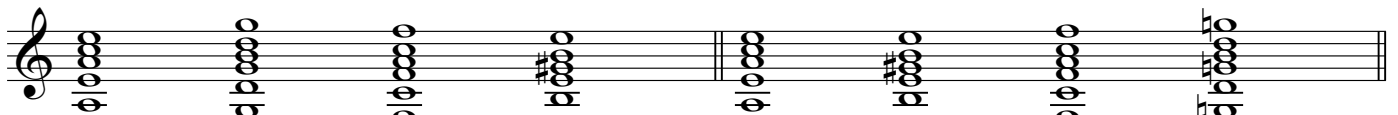


i III VII V i III VII V

A minor scale: A B C D E F G/G#A

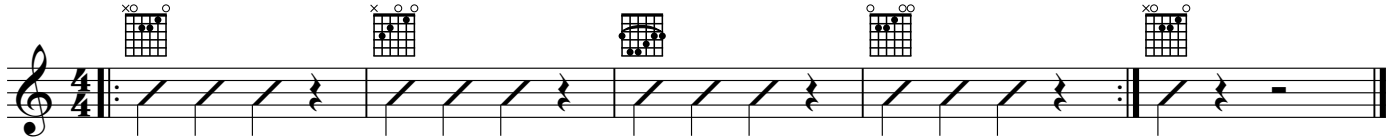
A minor scale: A B C D E F G/G#A

Am GM FM EM Am EM FM GM

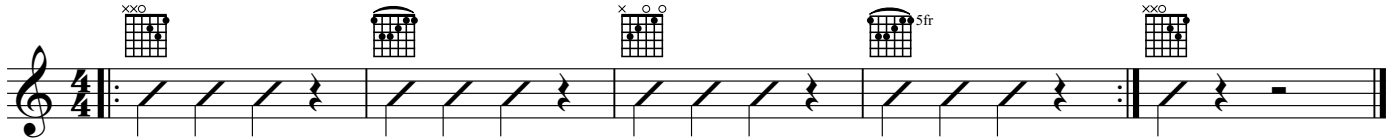


i VII VI V i V VI VII

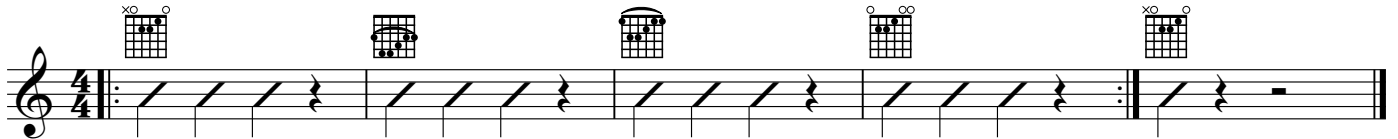
Am CM GM EM Am



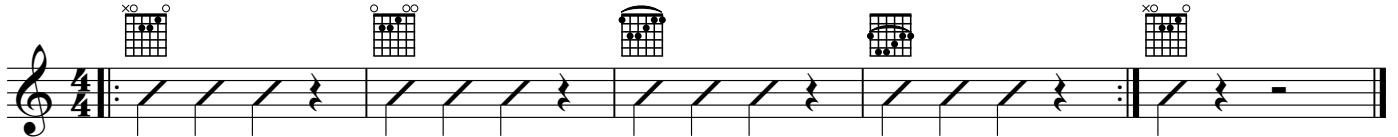
Dm FM CM AM Dm



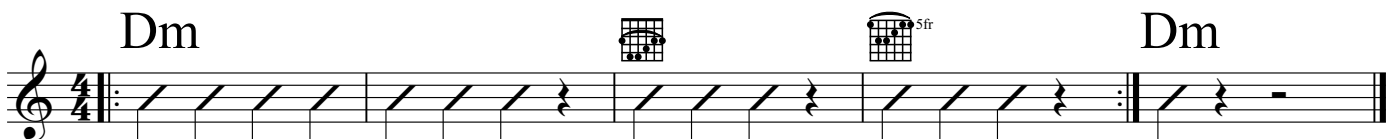
Am GM FM EM Am



Am EM FM GM Am



Dm GM AM Dm



Am FM Dm EM Am

Am CM FM EM Am

Dm FM GM AM Dm

GM Em Am DM GM

CM Am Dm GM CM

GM Em CM DM GM

CM Am FM GM CM

GM CM Am DM GM

DM GM Em AM DM

CM FM Dm GM CM

Lesson 30

12-Bar Blues

| | | | | | |
|----|----|----|----|----|----|
| GM | CM | DM | AM | DM | EM |
| | | | | | |
| | | | | | |
| I | IV | V | I | IV | V |

| | | | | | |
|----|----|----|----|----|----|
| DM | GM | AM | CM | FM | GM |
| | | | | | |
| | | | | | |
| I | IV | V | I | IV | V |

I

IV I

V IV I (V) I

| | | | | |
|----|----|----|----|----|
| Am | CM | GM | EM | Am |
| | | | | |

| | | | | |
|----|----|----|----|----|
| Dm | FM | CM | AM | Dm |
| | | | | |

Am GM FM EM Am

Am GM FM EM Am

Am EM FM GM Am

Am EM FM GM Am

Dm GM AM Dm

Dm GM AM Dm

Am FM Dm EM Am

Am FM Dm EM Am

Am CM FM EM Am

Am CM FM EM Am

Dm FM GM AM Dm

Dm FM GM AM Dm

GM Em Am DM GM

GM Em Am DM GM

CM Am Dm GM CM

CM Am Dm GM CM

GM Em CM DM GM

GM Em CM DM GM

CM Am FM GM CM

CM Am FM GM CM

Lesson 31

EM FM GM AM EM

AM GM FM EM AM

FM GM AM GM FM

AM GM FM GM AM

GM CM DM AM DM EM DM GM AM FM GM

I IV V I IV V I IV V I IV V

I

IV I

V IV I (V) I

Am CM GM EM Am

Dm FM CM AM Dm

Am GM FM EM Am

Am EM FM GM Am

Dm GM AM Dm

Am FM Dm EM Am

Am CM FM EM Am

Dm FM GM AM Dm