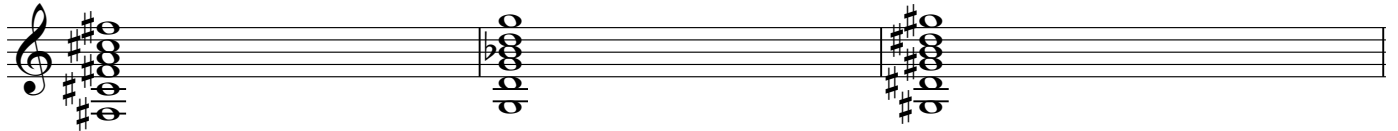
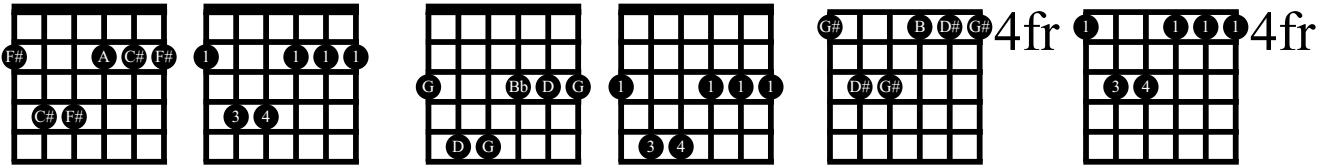


# UNIT 7: Minor Bar Chords with the Root on the E String

## Lesson 40

F#m F# minor = F# A C# Gm G minor = G Bb D G#m G# minor = G# B D#



Em F#m Em

Em Gm Em

Em G#m 4fr Em

Am Bm C#m 4fr Dm 5fr Am

Dm 5fr C#m 4fr Bm Am Dm 5fr

Bm C#m Dm C#m Bm

Dm C#m Bm C#m Dm

Am Dm Em Em Am Bm

i

iv i

v iv i (v) i

Am FM Dm EM Am

Am CM Dm EM Am

Dm FM GM AM Dm

Dm FM CM AM Dm

## Lesson 41

## I ii V, I vi IV V, I vi ii V

F Major scale: F G A B $\flat$  C D E FA Major scale: A B C $\sharp$  D E F $\sharp$  G $\sharp$  A

FM

Gm

CM

AM

F $\sharp$ m

DM

EM

Musical notation for F Major and A Major scales. The F Major scale is shown on a treble clef staff with notes F, G, A, B $\flat$ , C, D, E, F. The A Major scale is shown on a treble clef staff with notes A, B, C $\sharp$ , D, E, F $\sharp$ , G $\sharp$ , A. Below each scale are chord diagrams for FM, Gm, CM, AM, F $\sharp$ m, DM, and EM. Roman numerals I, ii, V, I, vi, IV, V are placed below the chord diagrams.

A Major scale: A B C $\sharp$  D E F $\sharp$  G $\sharp$  AF Major scale: F G A B $\flat$  C D E F

AM

F $\sharp$ m

Bm

EM

FM

Dm

Gm

CM

Musical notation for A Major and F Major scales. The A Major scale is shown on a treble clef staff with notes A, B, C $\sharp$ , D, E, F $\sharp$ , G $\sharp$ , A. The F Major scale is shown on a treble clef staff with notes F, G, A, B $\flat$ , C, D, E, F. Below each scale are chord diagrams for AM, F $\sharp$ m, Bm, EM, FM, Dm, Gm, and CM. Roman numerals I, vi, ii, V, I, vi, ii, V are placed below the chord diagrams.

FM

Gm

CM

FM

Musical notation for FM, Gm, CM, and FM chords. Each chord is shown with a guitar chord diagram and a musical staff with a 4/4 time signature. The notation includes a repeat sign and a final bar with a whole rest.

AM

F $\sharp$ m

DM

EM

AM

Musical notation for AM, F $\sharp$ m, DM, EM, and AM chords. Each chord is shown with a guitar chord diagram and a musical staff with a 4/4 time signature. The notation includes a repeat sign and a final bar with a whole rest.

AM

F $\sharp$ m

Bm

EM

AM

Musical notation for AM, F $\sharp$ m, Bm, EM, and AM chords. Each chord is shown with a guitar chord diagram and a musical staff with a 4/4 time signature. The notation includes a repeat sign and a final bar with a whole rest.

FM

Dm

Gm

CM

FM

Musical notation for FM, Dm, Gm, CM, and FM chords. Each chord is shown with a guitar chord diagram and a musical staff with a 4/4 time signature. The notation includes a repeat sign and a final bar with a whole rest.

Em

F $\sharp$ m

Em

Musical notation for Em, F $\sharp$ m, and Em chords. Each chord is shown with a guitar chord diagram and a musical staff with a 4/4 time signature. The notation includes a repeat sign and a final bar with a whole rest.

Em Gm Em

Em G#m Em

Am Bm C#m Dm Am

Dm C#m Bm Am Dm

Bm C#m Dm C#m Bm

Dm C#m Bm C#m Dm

Am Dm Em Em Am Bm

i iv v i iv v

i

iv i

v iv i (v) i

# Lesson 42

## I iii IV V and I iii ii V

D Major scale: D E F# G A B C# D

D Major scale: D E F# G A B C# D

F Major scale: F G A Bb C D E F

DM F#m GM AM

DM F#m Em AM

FM Am Gm CM

A musical staff showing the chord voicings for the D Major and F Major scales. The notes are arranged in groups corresponding to the chord labels: I, iii, IV, V for D Major; I, iii, ii, V for D Major; and I, iii, ii, V for F Major. Each chord is represented by a set of notes on a five-line staff.

DM F#m GM AM DM

A musical staff in 4/4 time showing the first sequence of chords: DM, F#m, GM, AM, DM. Each chord is accompanied by a guitar chord diagram. The staff contains rhythmic slashes and stems for each chord.

DM F#m Em AM DM

A musical staff in 4/4 time showing the second sequence of chords: DM, F#m, Em, AM, DM. Each chord is accompanied by a guitar chord diagram. The staff contains rhythmic slashes and stems for each chord.

FM Am Gm CM FM

A musical staff in 4/4 time showing the third sequence of chords: FM, Am, Gm, CM, FM. Each chord is accompanied by a guitar chord diagram. The staff contains rhythmic slashes and stems for each chord.

FM Gm CM FM

A musical staff in 4/4 time showing the fourth sequence of chords: FM, Gm, CM, FM. Each chord is accompanied by a guitar chord diagram. The staff contains rhythmic slashes and stems for each chord.

AM F#m DM EM AM

A musical staff in 4/4 time showing the fifth sequence of chords: AM, F#m, DM, EM, AM. Each chord is accompanied by a guitar chord diagram. The staff contains rhythmic slashes and stems for each chord.

AM F#m Bm EM AM

FM Dm Gm CM FM

Em F#m Em

Em Gm Em

Em G#m Em

Am Bm C#m Dm Am

Dm C#m Bm Am Dm

Bm C#m Dm C#m Bm

Dm C#m Bm C#m Dm

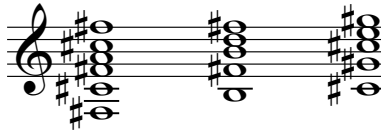
# Lesson 43

## i iv v

**F# natural minor scale:**

F# G# A B C# D E F#

F#m Bm C#m

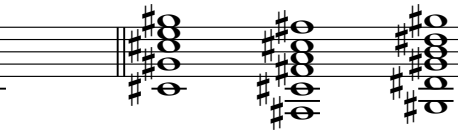


i iv v

**C# natural minor scale:**

C# D# E F# G# A B C#

C#m F#m G#m

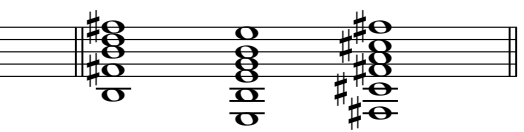


i iv v

**B natural minor scale:**

B C# D E F# G A B

Bm Em F#m

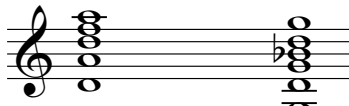


i iv v

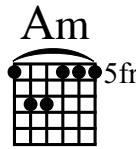
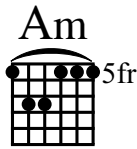
**D natural minor scale:**

D E F G A Bb C D

Dm Gm



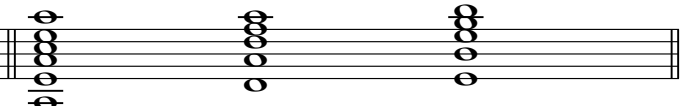
i iv



**A natural minor scale:**

A B C D E F G A

Dm Em



iv v

F#m



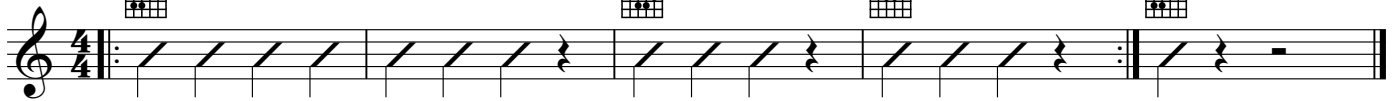
Bm



C#m



F#m



C#m



F#m



G#m



C#m



Bm



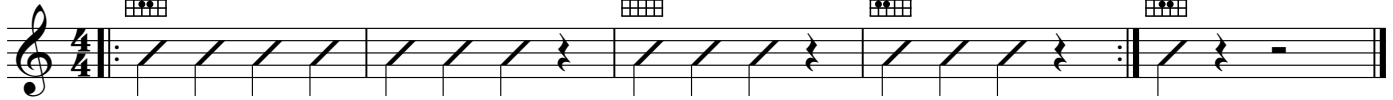
Em



F#m



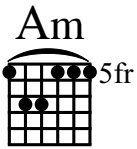
Bm



Dm



Gm



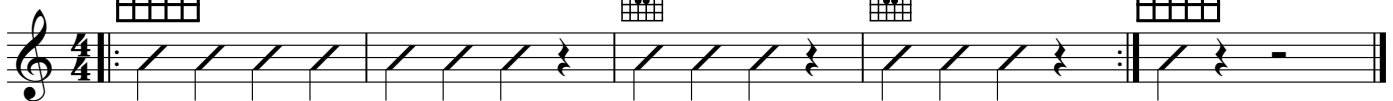
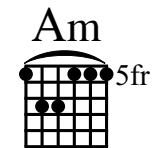
Dm



Dm



Em



DM F#m GM AM DM

DM F#m Em AM DM

FM Am Gm CM FM

FM Gm CM FM

AM F#m DM EM AM

AM F#m Bm EM AM

FM Dm Gm CM FM

Em F#m Em

Em Gm Em

Em G#m Em



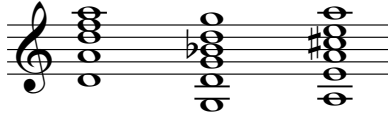
# Lesson 44

## i iv V, i IV V, i III iv V, i VII VI V, i V VI VII

**D harmonic minor scale:**

D E F G A B $\flat$  C $\sharp$  D

Dm Gm AM

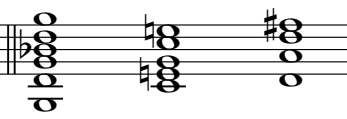


i iv V

**G melodic minor scale:**

G A B $\flat$  C D E $\sharp$  F $\sharp$  G

Gm CM DM

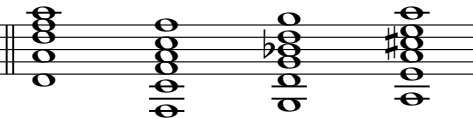


i IV V

**D minor scale:**

D E F G A B $\flat$  C/C $\sharp$  D

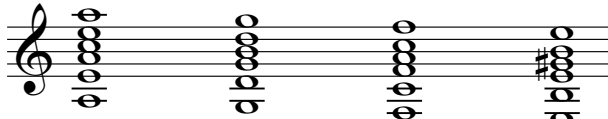
Dm FM Gm AM



i III iv V

**A minor scale: A B C D E F G/G $\sharp$ A**

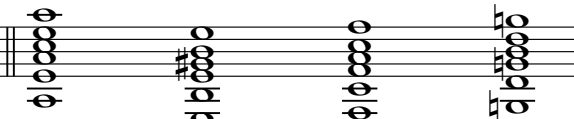
Am GM FM EM



i VII VI V

**A minor scale: A B C D E F G/G $\sharp$ A**

Am EM FM GM



i V VI VII

Dm



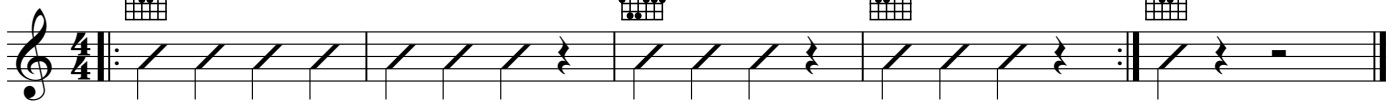
Gm



AM



Dm



Gm



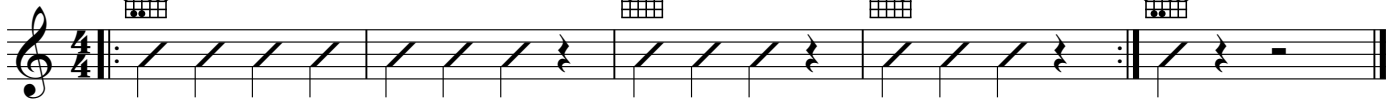
CM



DM



Gm



Dm



FM



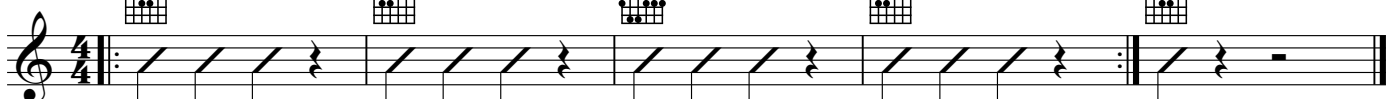
Gm



AM



Dm



Am



GM



FM



EM



Am



Am



EM



FM



GM






Am





F#m  Bm C#m F#m 

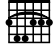
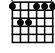



C#m F#m  G#m  C#m

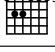
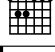



Bm Em F#m  Bm



Dm Gm  Am  Dm



Am  Dm Em 



DM F#m GM AM DM



DM F#m Em AM DM



FM Am Gm CM FM



FM Gm CM FM



AM F#m DM EM AM



AM F#m Bm EM AM



FM Dm Gm CM FM



# Lesson 45

## Minor Blues

F#m Bm C#m C#m F#m G#m Bm Em F#m

i iv v i iv v i iv v

Dm Gm Am Am Dm Em

i iv v i iv v

i

iv i

v iv i (v) i

Dm Gm AM Dm

Gm CM DM Gm

Dm FM Gm AM Dm  
 Am GM FM EM Am  
 Am EM FM GM Am  
 F#m Bm C#m F#m  
 C#m F#m G#m C#m  
 Bm Em F#m Bm  
 Dm Gm Am Dm  
 Am Dm Em Am  
 DM F#m GM AM DM  
 DM F#m Em AM DM  
 FM Am Gm CM FM

## Lesson 46

Em F#m Gm G#m Em

G#m Gm F#m Em G#m

F#m Gm G#m Gm F#m

G#m Gm F#m Gm G#m

F#m Bm C#m C#m F#m G#m Bm Em F#m

i iv v i iv v i iv v

Dm Gm Am Am Dm Em

i iv v i iv v

i  
iv i  
v iv i (v) i

Dm Gm AM Dm  
Gm CM DM Gm  
Dm FM Gm AM Dm  
Am GM FM EM Am  
Am EM FM GM Am

F#m Bm C#m F#m  
C#m F#m G#m C#m  
Bm Em F#m Bm  
Dm Gm Am Dm  
Am Dm Em Am