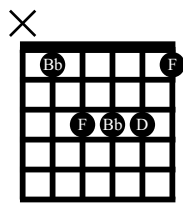


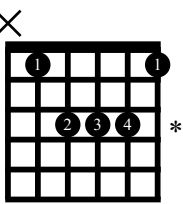
# UNIT 8: Major Bar Chords with the Root on the A String

## Lesson 47

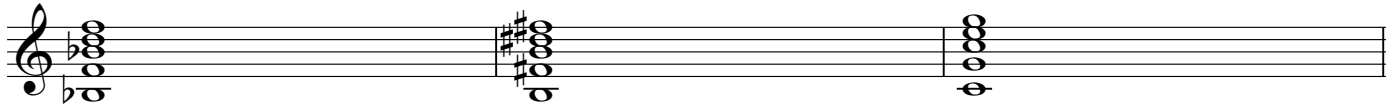
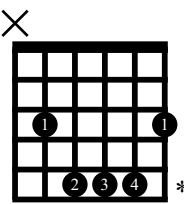
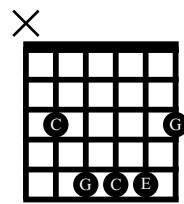
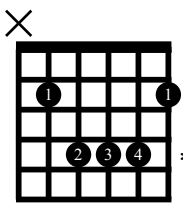
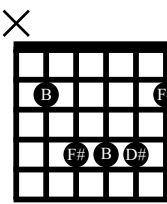
**B $\flat$ M** B $\flat$  Major = B $\flat$  D F



**BM** B Major = B D $\sharp$  F $\sharp$



**CM** C Major = C E G



\* In addition to "2 3 4" also try "3 2 4" and "3 3 3" (bar with the third finger).

AM B $\flat$ M AM

AM BM AM

AM CM AM

Em F $\sharp$ m Gm G $\sharp$ m Em

G $\sharp$ m Gm F $\sharp$ m Em G $\sharp$ m

F $\sharp$ m Gm G $\sharp$ m Gm F $\sharp$ m

G#m Gm F#m Gm G#m

F#m Bm C#m C#m F#m G#m Bm Em F#m

i iv v i iv v i iv v

Dm Gm Am Am Dm Em

i iv v i iv v

i

iv i

v iv i (v) i

Dm Gm AM Dm

Gm CM DM Gm

Dm FM Gm AM Dm

Am GM FM EM Am

Am EM FM GM Am

# Lesson 48

## I IV V

F Major scale: F G A B $\flat$  C D E F

C Major scale: C D E F G A B C

E Major scale: E F $\sharp$  G $\sharp$  A B C $\sharp$  D $\sharp$  E

FM B $\flat$ M CM

CM FM GM

EM AM BM

Musical notation showing chord diagrams for I, IV, and V chords in F, C, and E major scales. The chords are arranged in three groups, each with a treble clef and a key signature of one flat (B $\flat$ ), one sharp (F $\sharp$ ), and one natural (C).

FM

B $\flat$ M

CM

FM

Musical notation for the first row of chords: FM, B $\flat$ M, CM, FM. Each chord is accompanied by a guitar chord diagram. The notation is in 4/4 time with a treble clef and a key signature of one flat.

CM

FM

GM

CM

Musical notation for the second row of chords: CM, FM, GM, CM. Each chord is accompanied by a guitar chord diagram. The notation is in 4/4 time with a treble clef and a key signature of one flat.

EM

AM

BM

EM

Musical notation for the third row of chords: EM, AM, BM, EM. Each chord is accompanied by a guitar chord diagram. The notation is in 4/4 time with a treble clef and a key signature of one sharp.

AM

B $\flat$ M

AM

Musical notation for the fourth row of chords: AM, B $\flat$ M, AM. Each chord is accompanied by a guitar chord diagram. The notation is in 4/4 time with a treble clef and a key signature of one flat.

AM

BM

AM

Musical notation for the fifth row of chords: AM, BM, AM. Each chord is accompanied by a guitar chord diagram. The notation is in 4/4 time with a treble clef and a key signature of one sharp.

AM

CM

AM

Musical notation for the sixth row of chords: AM, CM, AM. Each chord is accompanied by a guitar chord diagram. The notation is in 4/4 time with a treble clef and a key signature of one sharp.

Em F#m Gm G#m Em

G#m Gm F#m Em G#m

F#m Gm G#m Gm F#m

G#m Gm F#m Gm G#m

F#m Bm C#m C#m F#m G#m Bm Em F#m

i iv v i iv v i iv v

Dm Gm Am Am Dm Em

i iv v i iv v

i

iv i

v iv i (v) i

# Lesson 49

## I ii V

F Major scale: F G A B $\flat$  C D E F

C Major scale: C D E F G A B C

E Major scale: E F $\sharp$  G $\sharp$  A B C $\sharp$  D $\sharp$  E

FM Gm CM CM Dm GM EM F $\sharp$ m BM

I ii V I ii V I ii V

FM

Gm

CM

FM

CM

Dm

GM

CM

EM

F $\sharp$ m

BM

EM

FM

B $\flat$ M

CM

FM

CM

FM

GM

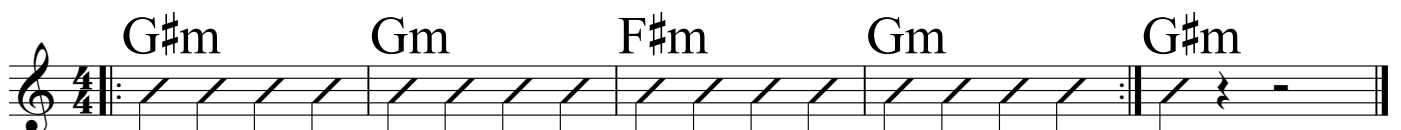
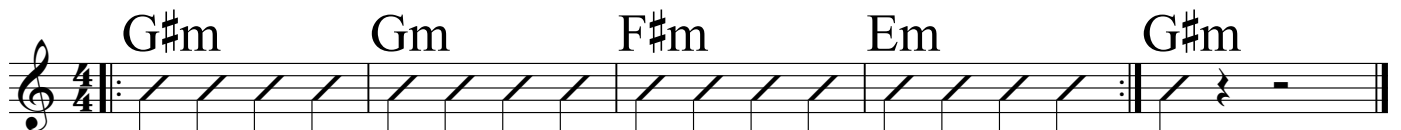
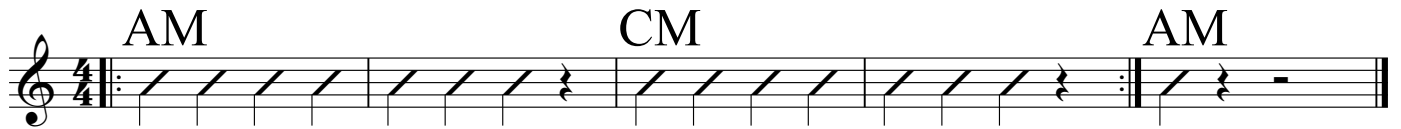
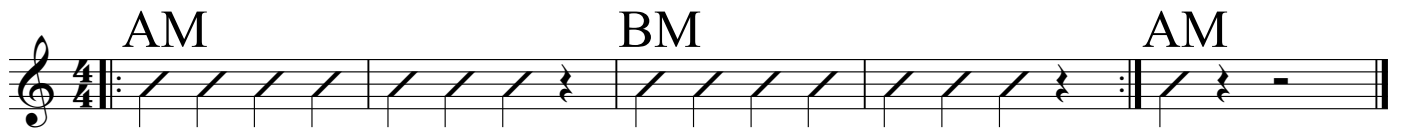
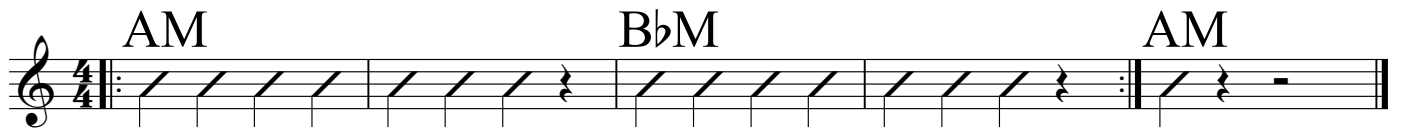
CM

EM

AM

BM

EM



# Lesson 50

## I IV ii V

F Major scale: F G A B $\flat$  C D E F

C Major scale: C D E F G A B C

E Major scale: E F $\sharp$  G $\sharp$  A B C $\sharp$  D $\sharp$  E

FM B $\flat$ M Gm CM

CM FM Dm GM

EM AM F $\sharp$ m BM

Musical notation showing the I IV ii V progression in F, C, and E major scales. The notation includes treble clef, a 4/4 time signature, and chord diagrams for each chord. The chords are: F (I), B $\flat$  (IV), Gm (ii), C (V) for F major; C (I), F (IV), Dm (ii), G (V) for C major; and E (I), A (IV), F $\sharp$ m (ii), B (V) for E major.

Musical notation for the first system of chords: FM, B $\flat$ M, Gm, CM, FM. Each chord is accompanied by a guitar chord diagram. The notation includes a treble clef and a 4/4 time signature.

Musical notation for the second system of chords: CM, FM, Dm, GM, CM. Each chord is accompanied by a guitar chord diagram. The notation includes a treble clef and a 4/4 time signature.

Musical notation for the third system of chords: EM, AM, F $\sharp$ m, BM, EM. Each chord is accompanied by a guitar chord diagram. The notation includes a treble clef and a 4/4 time signature.

Musical notation for the fourth system of chords: FM, Gm, CM, FM. Each chord is accompanied by a guitar chord diagram. The notation includes a treble clef and a 4/4 time signature.

Musical notation for the fifth system of chords: CM, Dm, GM, CM. Each chord is accompanied by a guitar chord diagram. The notation includes a treble clef and a 4/4 time signature.

Musical notation for the sixth system of chords: EM, F $\sharp$ m, BM, EM. Each chord is accompanied by a guitar chord diagram. The notation includes a treble clef and a 4/4 time signature.

FM B $\flat$ M CM FM

CM FM GM CM

EM AM BM EM

AM B $\flat$ M AM

AM BM AM

AM CM AM



# Lesson 51

## I vi IV V

F Major scale: F G A B $\flat$  C D E F

C Major scale: C D E F G A B C

E Major scale: E F $\sharp$  G $\sharp$  A B C $\sharp$  D $\sharp$  E

FM Dm B $\flat$ M CM

CM Am FM GM

EM C $\sharp$ m AM BM

Diagrammatic representation of chords for the first three systems. The first system shows FM, Dm, B $\flat$ M, and CM. The second system shows CM, Am, FM, and GM. The third system shows EM, C $\sharp$ m, AM, and BM. Each chord is represented by a vertical stack of notes on a staff.

I vi IV V I vi IV V I vi IV V

First system of chords with guitar diagrams: FM, Dm (5fr), B $\flat$ M, CM, FM. Each chord is shown with a guitar fretboard diagram indicating fingerings and barre positions.

Second system of chords with guitar diagrams: CM, Am (5fr), FM, GM, CM. Each chord is shown with a guitar fretboard diagram.

Third system of chords with guitar diagrams: EM, C $\sharp$ m (4fr), AM, BM, EM. Each chord is shown with a guitar fretboard diagram.

Fourth system of chords with guitar diagrams: FM, B $\flat$ M, Gm, CM, FM. Each chord is shown with a guitar fretboard diagram.

Fifth system of chords with guitar diagrams: CM, FM, Dm, GM, CM. Each chord is shown with a guitar fretboard diagram.

Sixth system of chords with guitar diagrams: EM, AM, F $\sharp$ m, BM, EM. Each chord is shown with a guitar fretboard diagram.

FM Gm CM FM

A musical staff in 4/4 time with a treble clef. It contains four measures of chords: FM, Gm, CM, and FM. Each measure is filled with a rhythmic pattern of diagonal slashes. The first three measures are repeated, and the fourth measure is followed by a repeat sign and a final measure with a whole rest.

CM Dm GM CM

A musical staff in 4/4 time with a treble clef. It contains four measures of chords: CM, Dm, GM, and CM. Each measure is filled with a rhythmic pattern of diagonal slashes. The first three measures are repeated, and the fourth measure is followed by a repeat sign and a final measure with a whole rest.

EM F#m BM EM

A musical staff in 4/4 time with a treble clef. It contains four measures of chords: EM, F#m, BM, and EM. Each measure is filled with a rhythmic pattern of diagonal slashes. The first three measures are repeated, and the fourth measure is followed by a repeat sign and a final measure with a whole rest.

FM BbM CM FM

A musical staff in 4/4 time with a treble clef. It contains four measures of chords: FM, BbM, CM, and FM. Each measure is filled with a rhythmic pattern of diagonal slashes. The first three measures are repeated, and the fourth measure is followed by a repeat sign and a final measure with a whole rest.

CM FM GM CM

A musical staff in 4/4 time with a treble clef. It contains four measures of chords: CM, FM, GM, and CM. Each measure is filled with a rhythmic pattern of diagonal slashes. The first three measures are repeated, and the fourth measure is followed by a repeat sign and a final measure with a whole rest.

EM AM BM EM

A musical staff in 4/4 time with a treble clef. It contains four measures of chords: EM, AM, BM, and EM. Each measure is filled with a rhythmic pattern of diagonal slashes. The first three measures are repeated, and the fourth measure is followed by a repeat sign and a final measure with a whole rest.

# Lesson 52

## I vi ii V

F Major scale: F G A B $\flat$  C D E F

C Major scale: C D E F G A B C

E Major scale: E F $\sharp$  G $\sharp$  A B C $\sharp$  D $\sharp$  E

FM Dm Gm CM

CM Am Dm GM

EM C $\sharp$ m F $\sharp$ m BM

Musical notation showing chord voicings for I, vi, ii, and V in F, C, and E major scales. The chords are arranged in three groups, each with a treble clef and a 4/4 time signature. The first group (F major) shows FM, Dm, Gm, and CM. The second group (C major) shows CM, Am, Dm, and GM. The third group (E major) shows EM, C $\sharp$ m, F $\sharp$ m, and BM. The notes are written as whole notes on a five-line staff.

FM

Dm

Gm

CM

FM

Musical notation for FM, Dm, Gm, CM, FM chords. Each chord name is accompanied by a guitar diagram showing the fretting pattern on a six-string guitar. The notation includes a treble clef, a 4/4 time signature, and a repeat sign. The chords are played as whole notes.

CM

Am

Dm

GM

CM

Musical notation for CM, Am, Dm, GM, CM chords. Each chord name is accompanied by a guitar diagram. The notation includes a treble clef, a 4/4 time signature, and a repeat sign. The chords are played as whole notes.

EM

C $\sharp$ m

F $\sharp$ m

BM

EM

Musical notation for EM, C $\sharp$ m, F $\sharp$ m, BM, EM chords. Each chord name is accompanied by a guitar diagram. The notation includes a treble clef, a 4/4 time signature, and a repeat sign. The chords are played as whole notes.

FM

Dm

B $\flat$ M

CM

FM

Musical notation for FM, Dm, B $\flat$ M, CM, FM chords. Each chord name is accompanied by a guitar diagram. The notation includes a treble clef, a 4/4 time signature, and a repeat sign. The chords are played as whole notes.

CM

Am

FM

GM

CM

Musical notation for CM, Am, FM, GM, CM chords. Each chord name is accompanied by a guitar diagram. The notation includes a treble clef, a 4/4 time signature, and a repeat sign. The chords are played as whole notes.

EM

C $\sharp$ m

AM

BM

EM

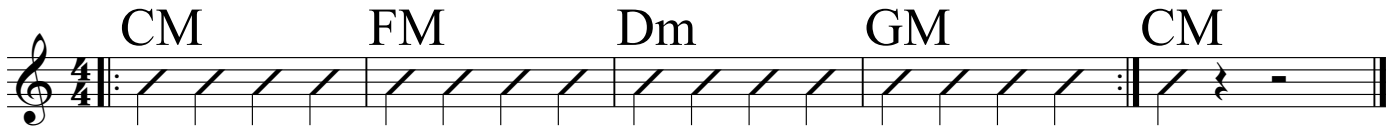
Musical notation for EM, C $\sharp$ m, AM, BM, EM chords. Each chord name is accompanied by a guitar diagram. The notation includes a treble clef, a 4/4 time signature, and a repeat sign. The chords are played as whole notes.

FM B $\flat$ M Gm CM FM



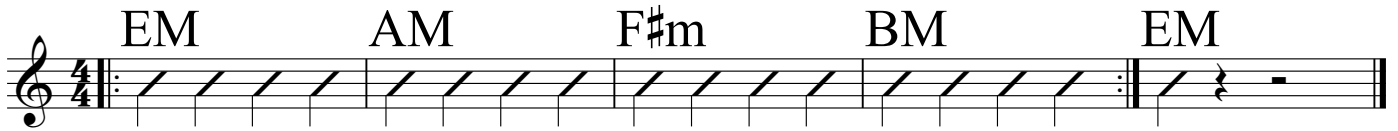
A musical staff in 4/4 time with a treble clef. It contains five measures of chords: FM, B $\flat$ M, Gm, CM, and FM. Each measure is filled with diagonal lines representing a strummed chord. The staff ends with a repeat sign and a final measure containing a quarter rest.

CM FM Dm GM CM



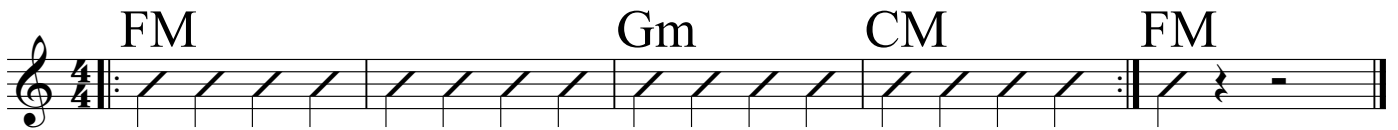
A musical staff in 4/4 time with a treble clef. It contains five measures of chords: CM, FM, Dm, GM, and CM. Each measure is filled with diagonal lines representing a strummed chord. The staff ends with a repeat sign and a final measure containing a quarter rest.

EM AM F $\sharp$ m BM EM



A musical staff in 4/4 time with a treble clef. It contains five measures of chords: EM, AM, F $\sharp$ m, BM, and EM. Each measure is filled with diagonal lines representing a strummed chord. The staff ends with a repeat sign and a final measure containing a quarter rest.

FM Gm CM FM



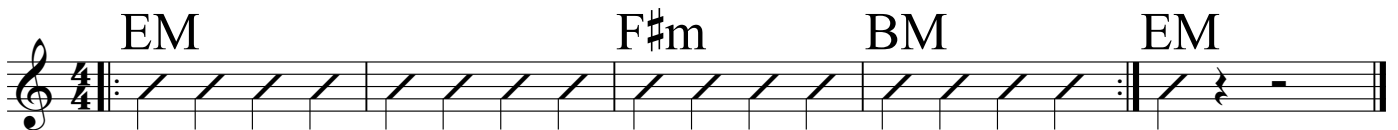
A musical staff in 4/4 time with a treble clef. It contains four measures of chords: FM, Gm, CM, and FM. Each measure is filled with diagonal lines representing a strummed chord. The staff ends with a repeat sign and a final measure containing a quarter rest.

CM Dm GM CM



A musical staff in 4/4 time with a treble clef. It contains four measures of chords: CM, Dm, GM, and CM. Each measure is filled with diagonal lines representing a strummed chord. The staff ends with a repeat sign and a final measure containing a quarter rest.

EM F $\sharp$ m BM EM



A musical staff in 4/4 time with a treble clef. It contains four measures of chords: EM, F $\sharp$ m, BM, and EM. Each measure is filled with diagonal lines representing a strummed chord. The staff ends with a repeat sign and a final measure containing a quarter rest.

# Lesson 53

## I iii IV V

F Major scale: F G A B $\flat$  C D E F

C Major scale: C D E F G A B C

E Major scale: E F $\sharp$  G $\sharp$  A B C $\sharp$  D $\sharp$  E

FM Am B $\flat$ M CM

CM Em FM GM

EM G $\sharp$ m AM BM

I iii IV V I iii IV V I iii IV V

FM Am B $\flat$ M CM FM

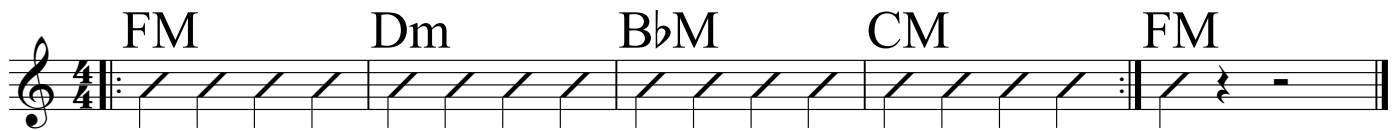
CM Em FM GM CM

EM G $\sharp$ m AM BM EM

FM Dm Gm CM FM

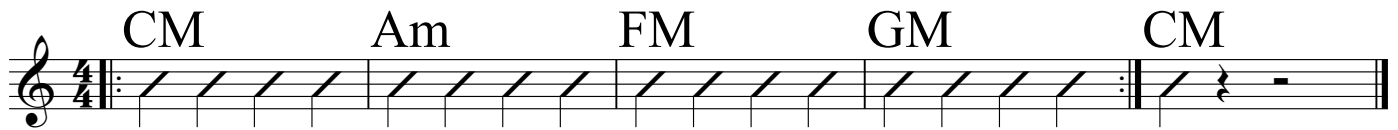
CM Am Dm GM CM

EM C $\sharp$ m F $\sharp$ m BM EM



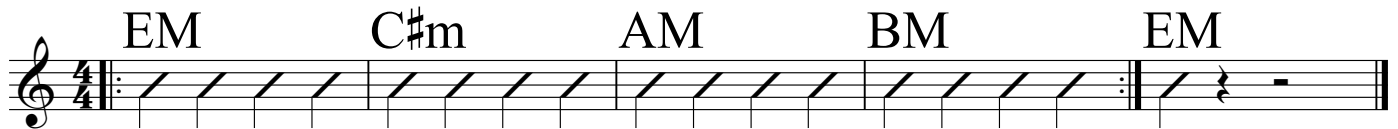
FM Dm B $\flat$ M CM FM

A musical staff in 4/4 time with a treble clef. It contains five measures of chords: FM, Dm, B $\flat$ M, CM, and FM. Each measure is filled with diagonal lines representing a strummed chord. The staff ends with a repeat sign and a final measure containing a quarter rest.



CM Am FM GM CM

A musical staff in 4/4 time with a treble clef. It contains five measures of chords: CM, Am, FM, GM, and CM. Each measure is filled with diagonal lines representing a strummed chord. The staff ends with a repeat sign and a final measure containing a quarter rest.




EM C $\sharp$ m AM BM EM

A musical staff in 4/4 time with a treble clef. It contains five measures of chords: EM, C $\sharp$ m, AM, BM, and EM. Each measure is filled with diagonal lines representing a strummed chord. The staff ends with a repeat sign and a final measure containing a quarter rest.



FM B $\flat$ M Gm CM FM

A musical staff in 4/4 time with a treble clef. It contains five measures of chords: FM, B $\flat$ M, Gm, CM, and FM. Each measure is filled with diagonal lines representing a strummed chord. The staff ends with a repeat sign and a final measure containing a quarter rest.



CM FM Dm GM CM

A musical staff in 4/4 time with a treble clef. It contains five measures of chords: CM, FM, Dm, GM, and CM. Each measure is filled with diagonal lines representing a strummed chord. The staff ends with a repeat sign and a final measure containing a quarter rest.



EM AM F $\sharp$ m BM EM

A musical staff in 4/4 time with a treble clef. It contains five measures of chords: EM, AM, F $\sharp$ m, BM, and EM. Each measure is filled with diagonal lines representing a strummed chord. The staff ends with a repeat sign and a final measure containing a quarter rest.

# Lesson 54

## I iii ii V

F Major scale: F G A B $\flat$  C D E F

C Major scale: C D E F G A B C

E Major scale: E F $\sharp$  G $\sharp$  A B C $\sharp$  D $\sharp$  E

FM Am Gm CM

CM Em Dm GM

EM G $\sharp$ m F $\sharp$ m BM

I iii ii V I iii ii V I iii ii V

FM Am Gm CM FM

CM Em Dm GM CM

EM G $\sharp$ m F $\sharp$ m BM EM

FM Am B $\flat$ M CM FM

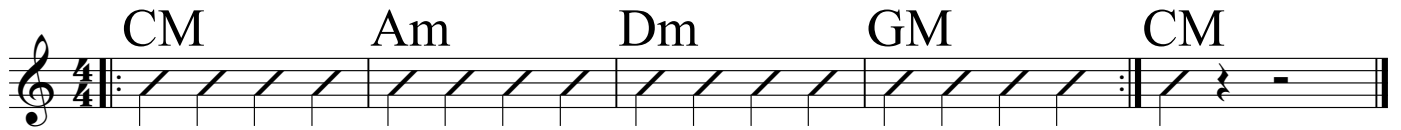
CM Em FM GM CM

EM G $\sharp$ m AM BM EM



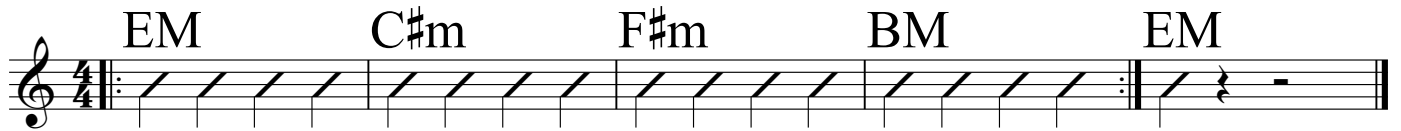
FM Dm Gm CM FM

A musical staff in 4/4 time with a treble clef. It contains five measures of music, each with a chord symbol above it: FM, Dm, Gm, CM, and FM. Each measure is filled with a rhythmic pattern of diagonal lines. The fifth measure ends with a double bar line and a repeat sign.



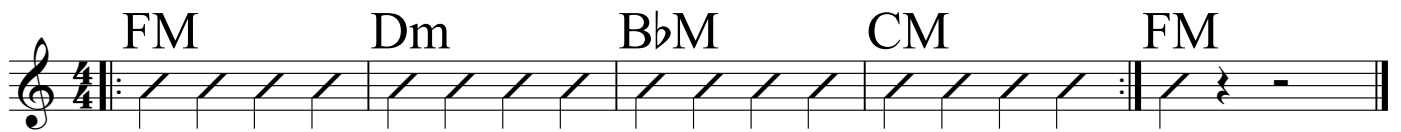
CM Am Dm GM CM

A musical staff in 4/4 time with a treble clef. It contains five measures of music, each with a chord symbol above it: CM, Am, Dm, GM, and CM. Each measure is filled with a rhythmic pattern of diagonal lines. The fifth measure ends with a double bar line and a repeat sign.



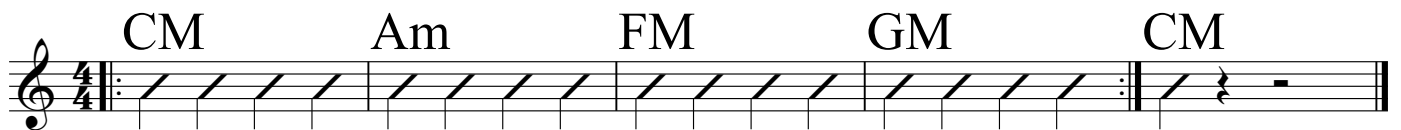
EM C#m F#m BM EM

A musical staff in 4/4 time with a treble clef. It contains five measures of music, each with a chord symbol above it: EM, C#m, F#m, BM, and EM. Each measure is filled with a rhythmic pattern of diagonal lines. The fifth measure ends with a double bar line and a repeat sign.



FM Dm B $\flat$ M CM FM

A musical staff in 4/4 time with a treble clef. It contains five measures of music, each with a chord symbol above it: FM, Dm, B $\flat$ M, CM, and FM. Each measure is filled with a rhythmic pattern of diagonal lines. The fifth measure ends with a double bar line and a repeat sign.



CM Am FM GM CM

A musical staff in 4/4 time with a treble clef. It contains five measures of music, each with a chord symbol above it: CM, Am, FM, GM, and CM. Each measure is filled with a rhythmic pattern of diagonal lines. The fifth measure ends with a double bar line and a repeat sign.



EM C#m AM BM EM

A musical staff in 4/4 time with a treble clef. It contains five measures of music, each with a chord symbol above it: EM, C#m, AM, BM, and EM. Each measure is filled with a rhythmic pattern of diagonal lines. The fifth measure ends with a double bar line and a repeat sign.




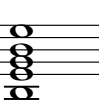




# Lesson 55

## i iv V, i IV V, and i VI iv V



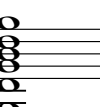

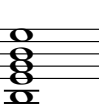
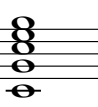
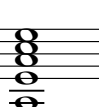

**E harmonic minor scale:** E F# G A B C D# E

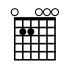
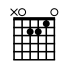
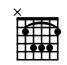
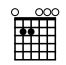
**E melodic minor scale:** E F# G A B C# D# E


|   |   |   |   |   |   |
|---|---|---|---|---|---|
| Em  | Am  | BM  | Em  | AM  | BM  |
|  |  |  |  |  |  |
| i   | iv  | V   | i   | IV  | V   |

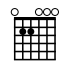
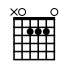
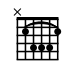
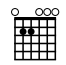
**D harmonic minor scale:** D E F G A Bb C# D

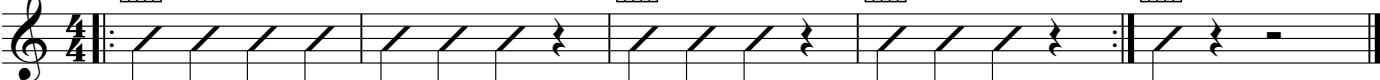
**E harmonic minor scale:** E F# G A B C D# E

|   |   |   |   |   |   |   |   |
|---|---|---|---|---|---|---|---|
| Dm  | BbM   | Gm  | AM  | Em  | CM  | Am  | BM  |
|  |  |  |  |  |  |  |  |
| i   | VI  | iv  | V   | i   | VI  | iv  | V   |

|   |   |  |   |
|---|---|--|---|
| Em  | Am  | BM   | Em  |
|  |  |  |  |

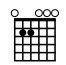
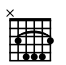
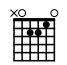
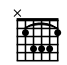
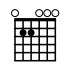


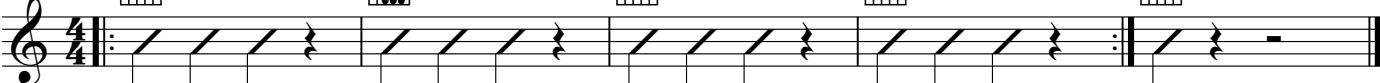
|   |   |  |   |
|---|---|--|---|
| Em  | AM  | BM   | Em  |
|  |  |  |  |



|   |   |   |  |   |
|---|---|---|--|---|
| Dm  | BbM   | Gm  | AM   | Dm  |
|  |  |  |  |  |



|   |   |   |  |   |
|---|---|---|--|---|
| Em  | CM  | Am  | BM   | Em  |
|  |  |  |  |  |



FM Am Gm CM FM

CM Em Dm GM CM

EM G#m F#m BM EM

FM Am BbM CM FM

CM Em FM GM CM

EM G#m AM BM EM

FM Dm Gm CM FM

CM Am Dm GM CM

EM C#m F#m BM EM

# Lesson 56

i III iv V, i III IV V, and i III VI V

E minor scale: E F# G A B C D/D# E

E minor scale: E F# G A B C/C# D/D# E

Em GM Am BM Em GM AM BM

i III iv V i III IV V

D minor scale:  
D E F G A Bb C/C# D

A minor scale:  
A B C D E F G/G# A

E minor scale:  
E F# G A B C D/D# E

Dm FM BbM AM Am CM FM EM Em GM CM BM

i III VI V i III VI V i III VI V

Em GM Am BM Em

Em GM AM BM Em

Dm FM BbM AM Dm

Am CM FM EM Am

Em GM CM BM Em

Em Am BM Em

Em AM BM Em

Dm BbM Gm AM Dm

Em CM Am BM Em

FM Am Gm CM FM

CM Em Dm GM CM

EM G#m F#m BM EM

FM Am BbM CM FM

CM Em FM GM CM

EM G#m AM BM EM

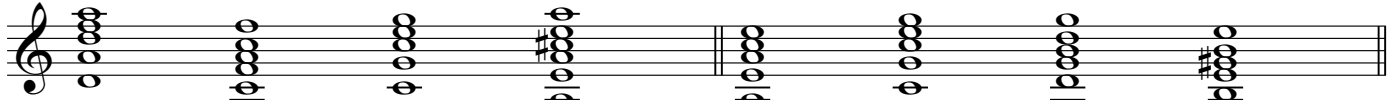
# Lesson 57

## i III VII V, i VII VI V, and i V VI VII

D minor scale: D E F G A B $\flat$  C/C $\sharp$  D

A minor scale: A B C D E F G/G $\sharp$  A

Dm FM CM AM Am CM GM EM

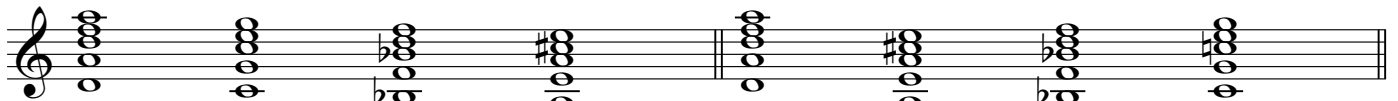


i III VII V i III VII V

D minor scale: D E F G A B $\flat$  C/C $\sharp$  D

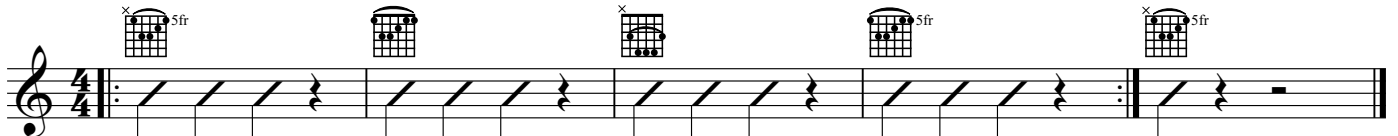
D minor scale: D E F G A B $\flat$  C/C $\sharp$  D

Dm CM B $\flat$ M AM Dm AM B $\flat$ M CM

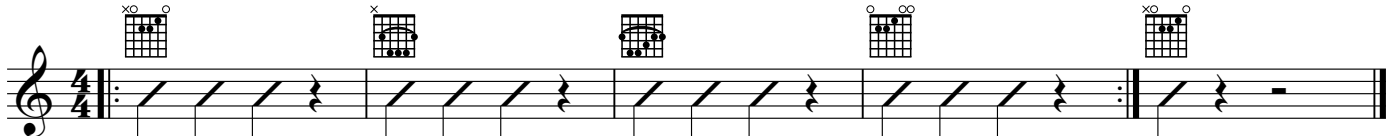


i VII VI V i V VI VII

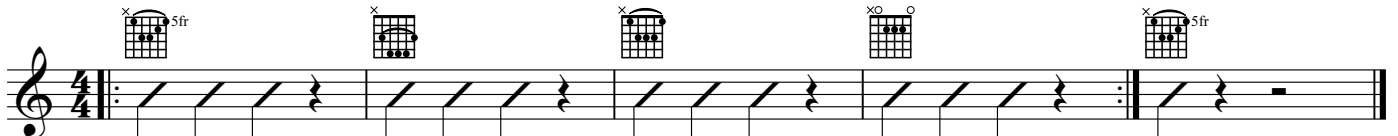
Dm FM CM AM Dm



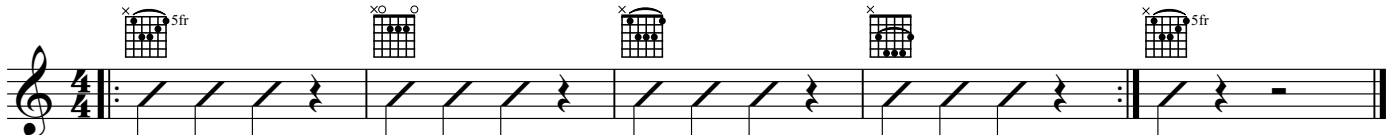
Am CM GM EM Am



Dm CM B $\flat$ M AM Dm



Dm AM B $\flat$ M CM Dm



Em GM Am BM Em

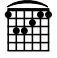
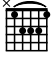
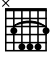
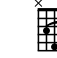

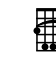





Em GM AM BM Em  
 Dm FM BbM AM Dm  
 Am CM FM EM Am  
 Em GM CM BM Em  
 Em Am BM Em  
 Em AM BM Em  
 Dm BbM Gm AM Dm  
 Em CM Am BM Em  
 FM Am Gm CM FM  
 CM Em Dm GM CM  
 EM G#m F#m BM EM

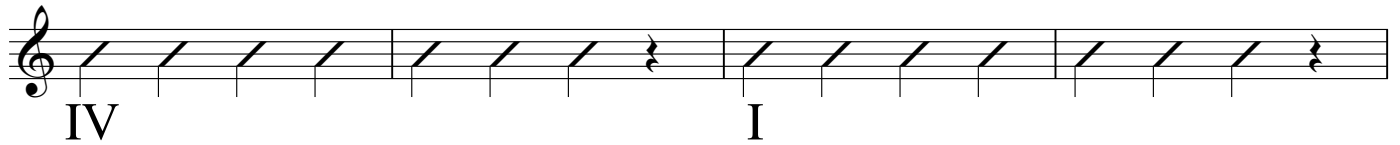
The image displays 11 staves of guitar chord exercises in 4/4 time. Each staff contains a sequence of chords with corresponding guitar diagrams. The chords are: Em, GM, AM, BM, Em; Dm, FM, BbM, AM, Dm; Am, CM, FM, EM, Am; Em, GM, CM, BM, Em; Em, Am, BM, Em; Em, AM, BM, Em; Dm, BbM, Gm, AM, Dm; Em, CM, Am, BM, Em; FM, Am, Gm, CM, FM; CM, Em, Dm, GM, CM; and EM, G#m, F#m, BM, EM.

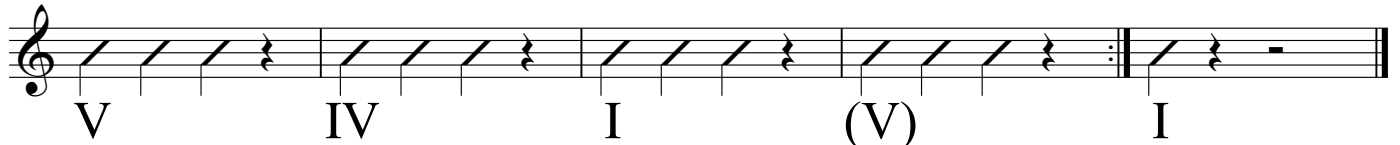
# Lesson 58

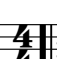
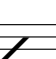
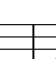
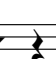
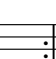
## 12-Bar Blues

|   |   |   |   |   |   |   |   |   |
|---|---|---|---|---|---|---|---|---|
| FM  | B $\flat$ M   | CM  | CM  | FM  | GM  | EM  | AM  | BM  |
|  |  |  |  |  |  |  |  |  |
| I   | IV  | V   | I   | IV  | V   | I   | IV  | V   |


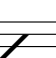
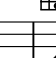
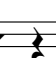
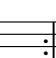


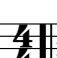
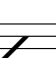
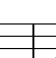
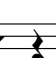
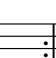




|   |   |   |   |   |
|---|---|---|---|---|
| Dm  | FM  | CM  | AM  | Dm  |
|  |  |  |  |  |

|   |   |   |   |   |
|---|---|---|---|---|
| Am  | CM  | GM  | EM  | Am  |
|  |  |  |  |  |

|   |   |   |   |   |
|---|---|---|---|---|
| Dm  | CM  | B $\flat$ M   | AM  | Dm  |
|  |  |  |  |  |

|   |   |   |   |   |
|---|---|---|---|---|
| Dm  | AM  | B $\flat$ M   | CM  | Dm  |
|  |  |  |  |  |

Em GM Am BM Em

Em GM AM BM Em

Dm FM B♭M AM Dm

Am CM FM EM Am

Em GM CM BM Em

Em Am BM Em

Em AM BM Em

Dm B♭M Gm AM Dm

Em CM Am BM Em



Lesson 59

AM  $B^bM$  BM CM AM

CM BM  $B^bM$  AM CM

$B^bM$  BM CM BM  $B^bM$

CM BM  $B^bM$  BM CM

FM  $B^bM$  CM CM FM GM EM AM BM

I IV V I IV V I IV V

I

IV I

V IV I (V) I

