

116 UNIT 9: More Major Bar Chords with the Root on the A String  
 Lesson 60  
 I IV V

G Major scale: G A B C D E F# G D Major scale: D E F# G A B C# D A Major scale: A B C# D E F# G# A

GM CM DM 5fr DM 5fr GM AM AM DM 5fr EM 7fr

I IV V I IV V I IV V

GM CM DM 5fr GM

DM 5fr GM AM 5fr DM 5fr

AM 5fr DM 5fr EM 7fr AM 5fr

AM BbM BM CM AM

CM BM BbM AM CM

B♭M BM CM BM B♭M

CM BM B♭M BM CM

FM B♭M CM CM FM GM EM AM BM

I IV V I IV V I IV V

I

IV I

V IV I (V) I

Dm FM CM AM Dm

Am CM GM EM Am

Dm CM B♭M AM Dm

Dm AM B♭M CM Dm

# Lesson 61

## I ii V

G Major scale: G A B C D E F# G   D Major scale: D E F# G A B C# D   A Major scale: A B C# D E F# G# A

GM   Am   DM   DM   Em   AM   AM   Bm   EM

I   ii   V   I   ii   V   I   ii   V

GM   Am   DM   GM

DM   Em   AM   DM

AM   Bm   EM   AM

GM   CM   DM   GM

DM   GM   AM   DM

AM   DM   EM   AM

AM B $\flat$ M BM CM AM

CM BM B $\flat$ M AM CM

B $\flat$ M BM CM BM B $\flat$ M

CM BM B $\flat$ M BM CM

FM B $\flat$ M CM CM FM GM EM AM BM

I IV V I IV V I IV V

I

IV I

V IV I (V) I

# Lesson 62

## I IV ii V

G Major scale: G A B C D E F# G D Major scale: D E F# G A B C# D A Major scale: A B C# D E F# G# A

GM CM Am DM DM GM Em AM AM DM Bm EM

I IV ii V I IV ii V I IV ii V

GM CM Am DM GM

DM GM Em AM DM

AM DM Bm EM AM

GM Am DM GM

DM Em AM DM

AM Bm EM AM

GM CM DM GM

A musical staff in 4/4 time with a treble clef. It contains four measures of chords: GM, CM, DM, and GM. Each measure is filled with diagonal lines representing a whole note chord. The staff ends with a repeat sign and a final measure containing a whole rest.

DM GM AM DM

A musical staff in 4/4 time with a treble clef. It contains four measures of chords: DM, GM, AM, and DM. Each measure is filled with diagonal lines representing a whole note chord. The staff ends with a repeat sign and a final measure containing a whole rest.

AM DM EM AM

A musical staff in 4/4 time with a treble clef. It contains four measures of chords: AM, DM, EM, and AM. Each measure is filled with diagonal lines representing a whole note chord. The staff ends with a repeat sign and a final measure containing a whole rest.

AM B♭M BM CM AM

A musical staff in 4/4 time with a treble clef. It contains five measures of chords: AM, B♭M, BM, CM, and AM. Each measure is filled with diagonal lines representing a whole note chord. The staff ends with a repeat sign and a final measure containing a whole rest.

CM BM B♭M AM CM

A musical staff in 4/4 time with a treble clef. It contains five measures of chords: CM, BM, B♭M, AM, and CM. Each measure is filled with diagonal lines representing a whole note chord. The staff ends with a repeat sign and a final measure containing a whole rest.

B♭M BM CM BM B♭M

A musical staff in 4/4 time with a treble clef. It contains five measures of chords: B♭M, BM, CM, BM, and B♭M. Each measure is filled with diagonal lines representing a whole note chord. The staff ends with a repeat sign and a final measure containing a whole rest.

CM BM B♭M BM CM

A musical staff in 4/4 time with a treble clef. It contains five measures of chords: CM, BM, B♭M, BM, and CM. Each measure is filled with diagonal lines representing a whole note chord. The staff ends with a repeat sign and a final measure containing a whole rest.

# Lesson 63

## I vi IV V

G Major scale: G A B C D E F# G    D Major scale: D E F# G A B C# D    A Major scale: A B C# D E F# G# A

GM Em CM DM    DM Bm GM AM    AM F#m DM EM

I    vi    IV    V    I    vi    IV    V    I    vi    IV    V

GM                  Em                  CM                  DM                  GM

DM                  Bm                  GM                  AM                  DM

AM                  F#m                  DM                  EM                  AM

GM                  CM                  Am                  DM                  GM

DM                  GM                  Em                  AM                  DM

AM                  DM                  Bm                  EM                  AM

GM Am DM GM

A musical staff in 4/4 time with a treble clef. It contains four measures of chords: GM, Am, DM, and GM. Each measure is filled with diagonal lines representing a strummed chord. The first three measures are followed by a repeat sign, and the fourth measure ends with a double bar line.

DM Em AM DM

A musical staff in 4/4 time with a treble clef. It contains four measures of chords: DM, Em, AM, and DM. Each measure is filled with diagonal lines representing a strummed chord. The first three measures are followed by a repeat sign, and the fourth measure ends with a double bar line.

AM Bm EM AM

A musical staff in 4/4 time with a treble clef. It contains four measures of chords: AM, Bm, EM, and AM. Each measure is filled with diagonal lines representing a strummed chord. The first three measures are followed by a repeat sign, and the fourth measure ends with a double bar line.

GM CM DM GM

A musical staff in 4/4 time with a treble clef. It contains four measures of chords: GM, CM, DM, and GM. Each measure is filled with diagonal lines representing a strummed chord. The first three measures are followed by a repeat sign, and the fourth measure ends with a double bar line.

DM GM AM DM

A musical staff in 4/4 time with a treble clef. It contains four measures of chords: DM, GM, AM, and DM. Each measure is filled with diagonal lines representing a strummed chord. The first three measures are followed by a repeat sign, and the fourth measure ends with a double bar line.

AM DM EM AM

A musical staff in 4/4 time with a treble clef. It contains four measures of chords: AM, DM, EM, and AM. Each measure is filled with diagonal lines representing a strummed chord. The first three measures are followed by a repeat sign, and the fourth measure ends with a double bar line.



# Lesson 64

## I vi ii V

G Major scale: G A B C D E F# G    D Major scale: D E F# G A B C# D    A Major scale: A B C# D E F# G# A

GM Em Am DM    DM Bm Em AM    AM F#m Bm EM

I    vi    ii    V    I    vi    ii    V    I    vi    ii    V

GM                  Em                  Am                  DM                  GM

DM                  Bm                  Em                  AM                  DM

AM                  F#m                  Bm                  EM                  AM

GM                  Em                  CM                  DM                  GM

DM                  Bm                  GM                  AM                  DM

AM                  F#m                  DM                  EM                  AM

GM CM Am DM GM

A musical staff in 4/4 time with a treble clef. It contains five measures of chords: GM, CM, Am, DM, and GM. Each measure is filled with diagonal lines representing a strummed chord. The staff ends with a double bar line and a repeat sign.

DM GM Em AM DM

A musical staff in 4/4 time with a treble clef. It contains five measures of chords: DM, GM, Em, AM, and DM. Each measure is filled with diagonal lines representing a strummed chord. The staff ends with a double bar line and a repeat sign.

AM DM Bm EM AM

A musical staff in 4/4 time with a treble clef. It contains five measures of chords: AM, DM, Bm, EM, and AM. Each measure is filled with diagonal lines representing a strummed chord. The staff ends with a double bar line and a repeat sign.

GM Am DM GM

A musical staff in 4/4 time with a treble clef. It contains four measures of chords: GM, Am, DM, and GM. Each measure is filled with diagonal lines representing a strummed chord. The staff ends with a double bar line and a repeat sign.

DM Em AM DM

A musical staff in 4/4 time with a treble clef. It contains four measures of chords: DM, Em, AM, and DM. Each measure is filled with diagonal lines representing a strummed chord. The staff ends with a double bar line and a repeat sign.

AM Bm EM AM

A musical staff in 4/4 time with a treble clef. It contains four measures of chords: AM, Bm, EM, and AM. Each measure is filled with diagonal lines representing a strummed chord. The staff ends with a double bar line and a repeat sign.

# Lesson 65

## I iii IV V

G Major scale: G A B C D E F# G    D Major scale: D E F# G A B C# D    A Major scale: A B C# D E F# G# A

GM Bm CM DM    DM F#m GM AM    AM C#m DM EM

I    iii    IV    V    I    iii    IV    V    I    iii    IV    V

GM                  Bm                  CM                  DM                  GM

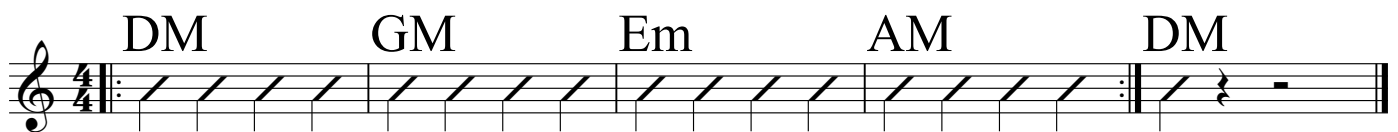
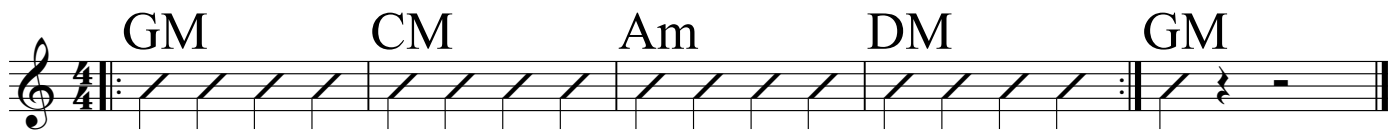
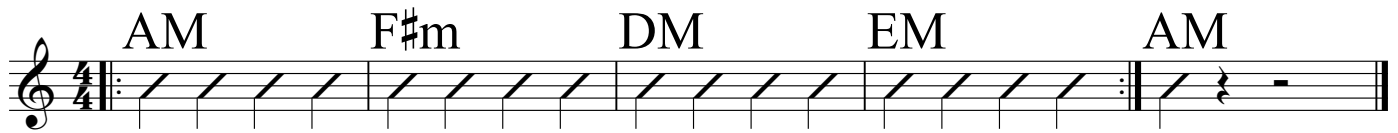
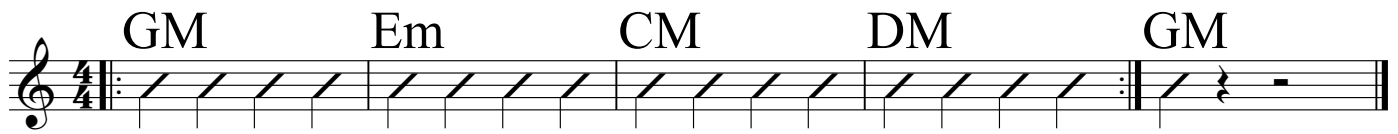
DM                  F#m                  GM                  AM                  DM

AM                  C#m                  DM                  EM                  AM

GM                  Em                  Am                  DM                  GM

DM                  Bm                  Em                  AM                  DM

AM                  F#m                  Bm                  EM                  AM



# Lesson 66

## I iii ii V

G Major scale: G A B C D E F# G    D Major scale: D E F# G A B C# D    A Major scale: A B C# D E F# G# A

GM Bm Am DM    DM F#m Em AM    AM C#m Bm EM

I    iii    ii    V    I    iii    ii    V    I    iii    ii    V

GM                    Bm                    Am                    DM                    GM

DM                    F#m                    Em                    AM                    DM

AM                    C#m                    Bm                    EM                    AM

GM                    Bm                    CM                    DM                    GM

DM                    F#m                    GM                    AM                    DM

AM                    C#m                    DM                    EM                    AM

GM Em Am DM GM

DM Bm Em AM DM

AM F#m Bm EM AM

GM Em CM DM GM

DM Bm GM AM DM

AM F#m DM EM AM

# Lesson 67

## i iv V and i IV V

**A harmonic minor scale:**

A B C D E F G# A

**G melodic minor scale:**

G A B $\flat$  C D E $\sharp$  F# G

**A melodic minor scale:**

A B C D E F# G# A

Am	Dm	EM	Gm	CM	DM	Am	DM	EM
i	iv	V	i	IV	V	i	IV	V

Am	Dm	EM	Am

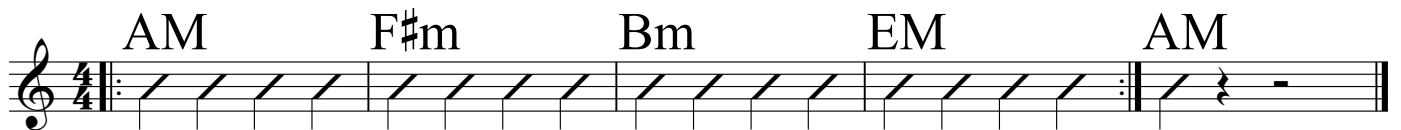
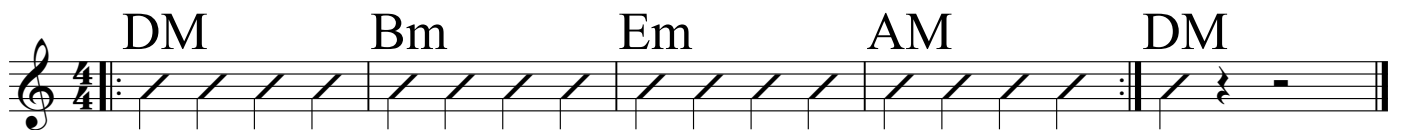
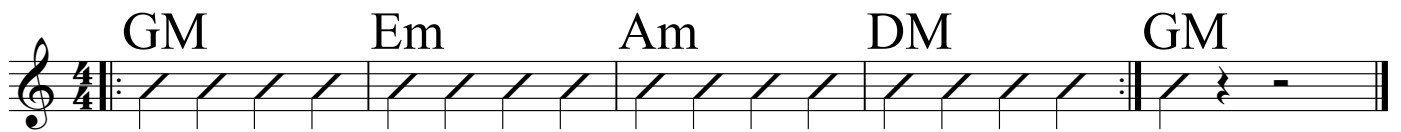
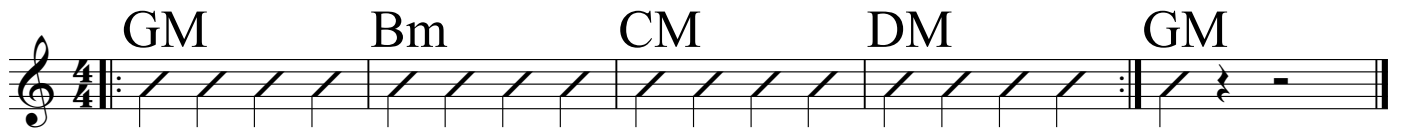
Gm	CM	DM	Gm

Am	DM	EM	Am

GM	Bm	Am	DM	GM

DM	F#m	Em	AM	DM

AM	C#m	Bm	EM	AM

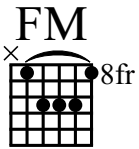




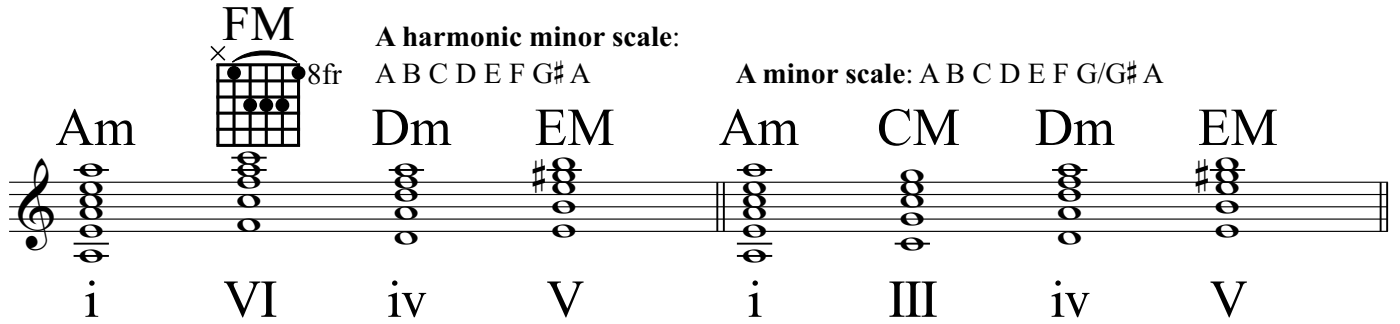
# Lesson 68

## i VI iv V, i III iv V, and i III IV V

**A harmonic minor scale:** A B C D E F G# A  
**A minor scale:** A B C D E F G/G# A

Am  8fr Dm EM Am CM Dm EM

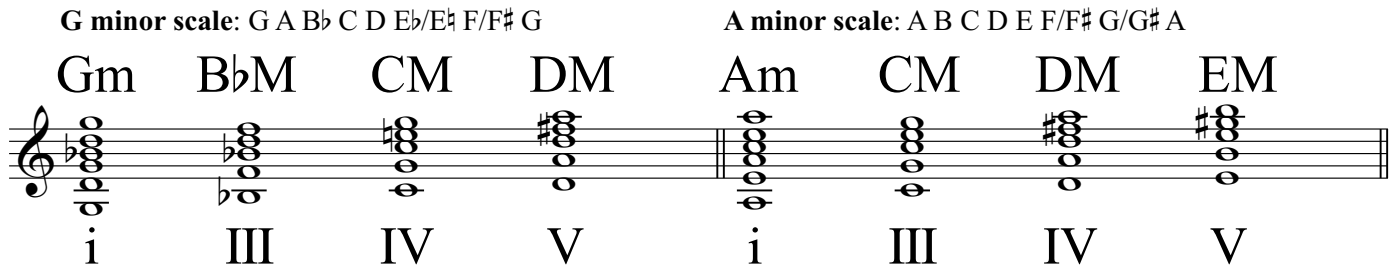
i VI iv V i III iv V


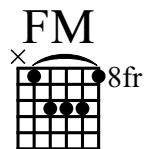





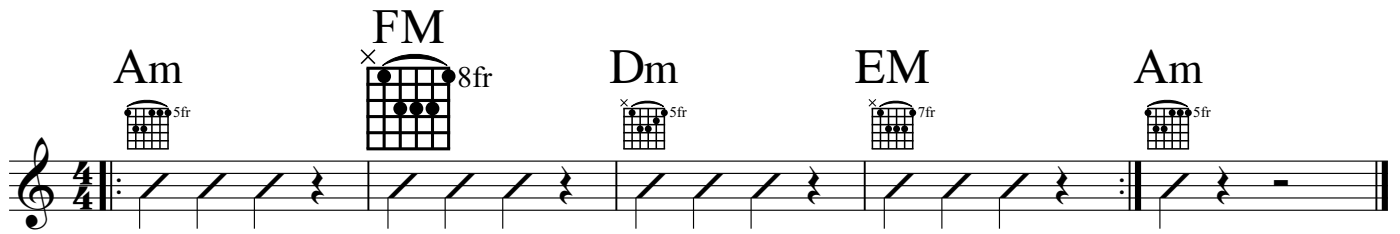
**G minor scale:** G A Bb C D Eb/Eb F/F# G  
**A minor scale:** A B C D E F/F# G/G# A






Gm BbM CM DM Am CM DM EM

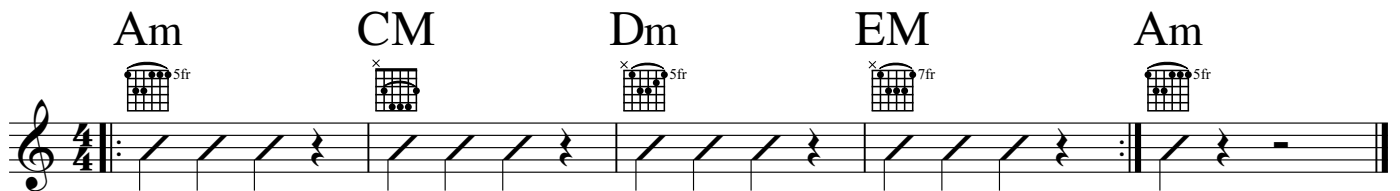
i III IV V i III IV V








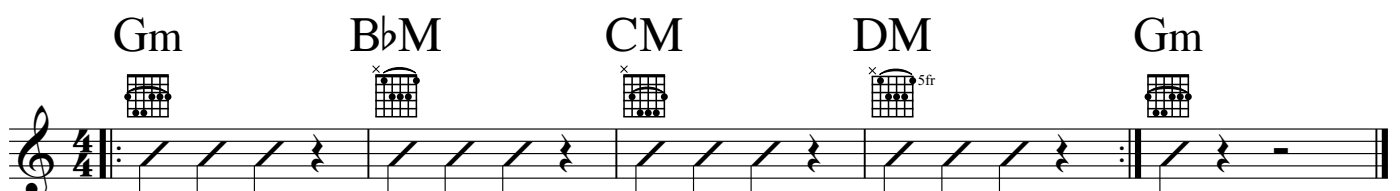
Am  5fr FM  8fr Dm  5fr EM  7fr Am  5fr








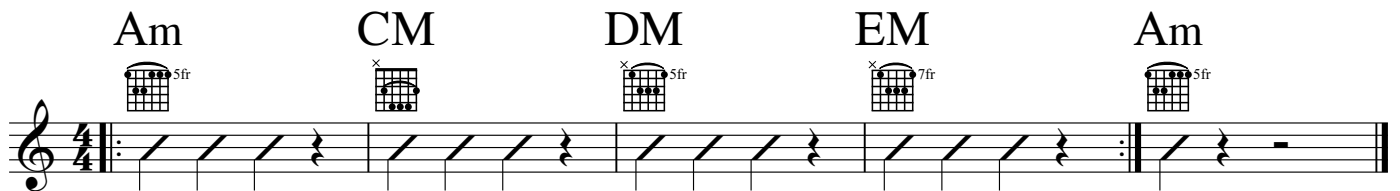
Am  5fr CM  5fr Dm  5fr EM  7fr Am  5fr



Gm  5fr BbM  5fr CM  5fr DM  5fr Gm  5fr



Am  5fr CM  5fr DM  5fr EM  7fr Am  5fr



Am Dm EM Am

A musical staff in 4/4 time with a treble clef. It contains four measures of guitar chords: Am, Dm, EM (with a 7-fret diagram), and Am. Each measure has a slash for the first half and a quarter rest for the second half. A repeat sign is at the end.

Gm CM DM Gm

A musical staff in 4/4 time with a treble clef. It contains four measures of guitar chords: Gm, CM, DM (with a 5-fret diagram), and Gm. Each measure has a slash for the first half and a quarter rest for the second half. A repeat sign is at the end.

Am DM EM Am

A musical staff in 4/4 time with a treble clef. It contains four measures of guitar chords: Am, DM (with a 5-fret diagram), EM (with a 7-fret diagram), and Am. Each measure has a slash for the first half and a quarter rest for the second half. A repeat sign is at the end.

GM Bm Am DM GM

A musical staff in 4/4 time with a treble clef. It contains five measures of guitar chords: GM, Bm, Am, DM, and GM. Each measure has a slash for the first half and a quarter rest for the second half. A repeat sign is at the end.

DM F#m Em AM DM

A musical staff in 4/4 time with a treble clef. It contains five measures of guitar chords: DM, F#m, Em, AM, and DM. Each measure has a slash for the first half and a quarter rest for the second half. A repeat sign is at the end.

AM C#m Bm EM AM

A musical staff in 4/4 time with a treble clef. It contains five measures of guitar chords: AM, C#m, Bm, EM, and AM. Each measure has a slash for the first half and a quarter rest for the second half. A repeat sign is at the end.

GM Bm CM DM GM

A musical staff in 4/4 time with a treble clef. It contains five measures of guitar chords: GM, Bm, CM, DM, and GM. Each measure has a slash for the first half and a quarter rest for the second half. A repeat sign is at the end.

DM F#m GM AM DM

A musical staff in 4/4 time with a treble clef. It contains five measures of guitar chords: DM, F#m, GM, AM, and DM. Each measure has a slash for the first half and a quarter rest for the second half. A repeat sign is at the end.

AM C#m DM EM AM

A musical staff in 4/4 time with a treble clef. It contains five measures of guitar chords: AM, C#m, DM, EM, and AM. Each measure has a slash for the first half and a quarter rest for the second half. A repeat sign is at the end.

# Lesson 69

i III VI V, i III VII V, i VII VI V, and i V VI VII

A minor scale: A B C D E F G/G#A

D minor scale: D E F G A Bb C/C#D

Am	CM	FM	EM	Dm	FM	CM	AM
i	III	VI	V	i	III	VII	V

E minor scale: E F# G A B C D/D#E

E minor scale: E F# G A B C D/D#E

Em	DM	CM	BM	Em	BM	CM	DM
i	VII	VI	V	i	V	VI	VII

Am	CM	FM	EM	Am

Dm	FM	CM	AM	Dm

Em	DM	CM	BM	Em

Em	BM	CM	DM	Em

Am FM Dm EM Am

Am CM Dm EM Am

Gm BbM CM DM Gm

Am CM DM EM Am

Am Dm EM Am

Gm CM DM Gm

Am DM EM Am

GM Bm Am DM GM

DM F#m Em AM DM

AM C#m Bm EM AM

# Lesson 70

## 12-Bar Blues

GM CM DM DM GM AM AM DM EM

I IV V I IV V I IV V

I

IV I

V IV I (V) I

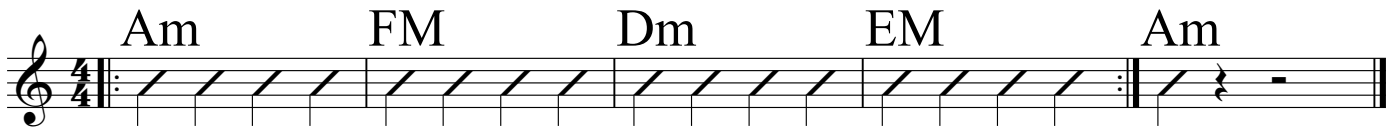
Am CM FM EM Am

Dm FM CM AM Dm

Em DM CM BM Em

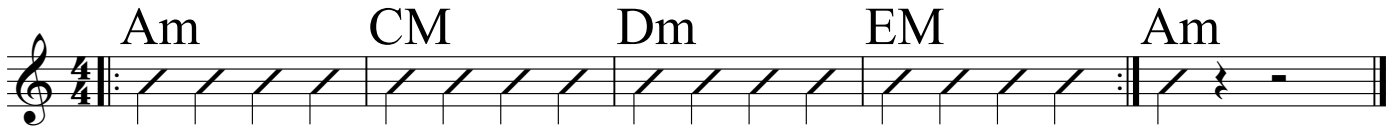
Em BM CM DM Em

Am FM Dm EM Am



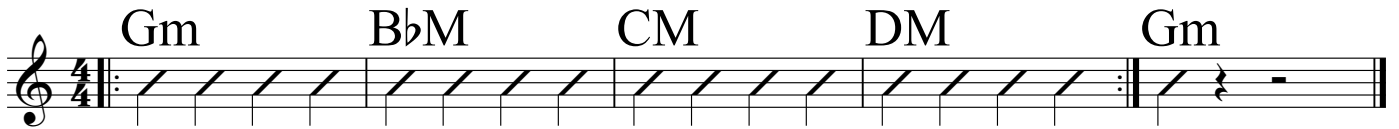
A musical staff in 4/4 time with a treble clef. It contains five measures of chords: Am, FM, Dm, EM, and Am. Each measure is filled with diagonal lines representing a whole note chord. The staff ends with a repeat sign and a final measure containing a whole rest.

Am CM Dm EM Am



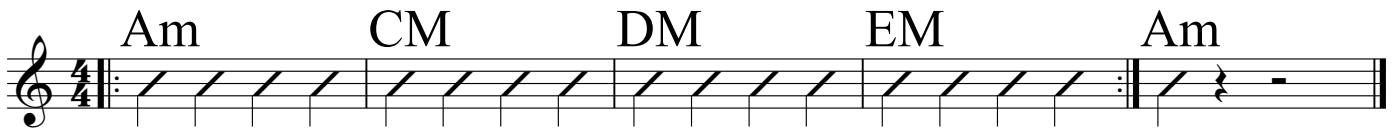
A musical staff in 4/4 time with a treble clef. It contains five measures of chords: Am, CM, Dm, EM, and Am. Each measure is filled with diagonal lines representing a whole note chord. The staff ends with a repeat sign and a final measure containing a whole rest.

Gm BbM CM DM Gm



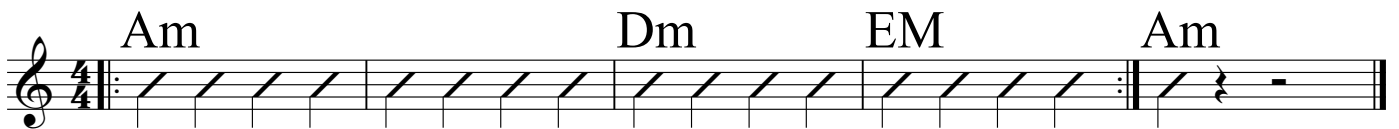
A musical staff in 4/4 time with a treble clef. It contains five measures of chords: Gm, BbM, CM, DM, and Gm. Each measure is filled with diagonal lines representing a whole note chord. The staff ends with a repeat sign and a final measure containing a whole rest.

Am CM DM EM Am



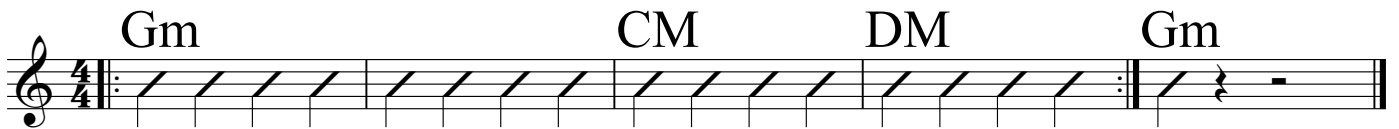
A musical staff in 4/4 time with a treble clef. It contains five measures of chords: Am, CM, DM, EM, and Am. Each measure is filled with diagonal lines representing a whole note chord. The staff ends with a repeat sign and a final measure containing a whole rest.

Am Dm EM Am



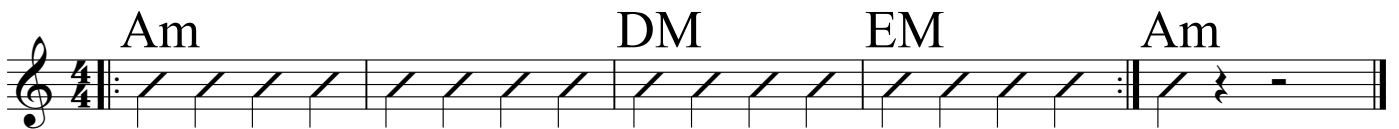
A musical staff in 4/4 time with a treble clef. It contains five measures of chords: Am, Dm, EM, and Am. The first measure is Am, the second is Dm, the third is EM, and the fourth is Am. Each measure is filled with diagonal lines representing a whole note chord. The staff ends with a repeat sign and a final measure containing a whole rest.

Gm CM DM Gm



A musical staff in 4/4 time with a treble clef. It contains five measures of chords: Gm, CM, DM, and Gm. The first measure is Gm, the second is CM, the third is DM, and the fourth is Gm. Each measure is filled with diagonal lines representing a whole note chord. The staff ends with a repeat sign and a final measure containing a whole rest.

Am DM EM Am



A musical staff in 4/4 time with a treble clef. It contains five measures of chords: Am, DM, EM, and Am. The first measure is Am, the second is DM, the third is EM, and the fourth is Am. Each measure is filled with diagonal lines representing a whole note chord. The staff ends with a repeat sign and a final measure containing a whole rest.